

# Town of Enfield Connecticut



## Comprehensive Annual Financial Report

Fiscal Year Ended June 30, 2015

**TOWN OF ENFIELD, CONNECTICUT  
COMPREHENSIVE ANNUAL FINANCIAL REPORT  
FOR THE FISCAL YEAR ENDED JUNE 30, 2015**

Department of Finance

Lynn Nenni  
Director of Finance

# INTRODUCTORY SECTION

**TOWN OF ENFIELD, CONNECTICUT  
TABLE OF CONTENTS  
JUNE 30, 2015**

---

**Introductory Section**

---

Table of Contents	i-ii
Letter of Transmittal	iii-vi
GFOA Certificate of Achievement	vii
Organizational Chart	viii
List of Principal Officials	ix

**Financial Section**

---

Independent Auditors' Report	1-3
Management's Discussion and Analysis	4-12

**Exhibit**

Basic Financial Statements:

Government-Wide Financial Statements:

I	Statement of Net Position	13
II	Statement of Activities	14

Fund Financial Statements:

III	Balance Sheet - Governmental Funds	15-16
IV	Statement of Revenues, Expenditures and Changes in Fund Balances - Governmental Funds	17-18
V	Statement of Net Position - Proprietary Funds	19
VI	Statement of Revenues, Expenses and Changes in Net Position - Proprietary Funds	20
VII	Statement of Cash Flows - Proprietary Funds	21
VIII	Statement of Net Position - Fiduciary Funds	22
IX	Statement of Changes in Fiduciary Net Position - Fiduciary Funds	23
	Notes to the Financial Statements	24-57

Required Supplementary Information

RSI-1	Schedule of Revenues and Other Financing Sources - Budget and Actual - General Fund	58-60
RSI-2	Schedule of Expenditures and Other Financing Uses - Budget and Actual - General Fund	61-63
RSI-3	Schedule of Changes in Net Pension Liability and Related Ratios - Employee's	64
RSI-4	Schedule of Changes in Net Pension Liability and Related Ratios - Police	65
RSI-5	Schedule of Employer Contributions - Employee's	66
RSI-6	Schedule of Employer Contributions - Police	67
RSI-7	Schedule of Investment Returns	68
RSI-8	Schedule of the Town's Proportionate Share of Net Pension Liability - Teachers Retirement Plan	69

Combining and Individual Fund Statements and Schedules:

General Fund:

A-1	Combining Balance Sheet	70-71
-----	-------------------------	-------

A-2	Combining Schedule of Revenues, Expenditures and Changes in Fund Balances	72-73
A-3	Report of the Tax Collector	74
A-4	Schedule of Revenues, Expenditures and Changes in Fund Balances - Budgetary Basis - Budget and Actual - Social Services Fund	75
A-5	Schedule of Revenues, Expenditures and Changes in Fund Balances - Budgetary Basis - Budget and Actual - Emergency Medical Services Fund	76
Nonmajor Governmental Funds:		
B-1	Combining Balance Sheet	77
B-2	Combining Statement of Revenues, Expenditures and Changes in Fund Balances	78
B-3	Schedule of Revenues, Expenditures and Changes in Fund Balances - Budgetary Basis - Budget and Actual - Water Pollution Control Fund	79
Internal Service Funds:		
C-1	Combining Statement of Net Position	80
C-2	Combining Statement of Revenues, Expenses and Changes in Net Position	81
C-3	Combining Statement of Cash Flows	82
Fiduciary Funds:		
D-1	Combining Statement of Net Position - Trust Funds	83
D-2	Combining Statement of Changes in Net Position - Trust Funds	84
D-3	Combining Statement of Changes in Assets and Liabilities - Agency Funds	85

## **Table**

Statistical Section:		
Financial Trends:		
1	Net Position by Component	86
2	Changes in Net Position	87
3	Fund Balances of Governmental Funds	88
4	Revenues, Expenditures and Changes in Fund Balances - Governmental Funds	89
Revenue Capacity:		
5	Assessed Value and Estimated Actual Value of Taxable Property	90
6	Direct and Overlapping Property Tax Rates	91
7	Principal Property Taxpayers	92
8	Property Tax Levies and Collections	93
Debt Capacity:		
9	Ratios of Outstanding Debt by Type	94
10	Direct and Overlapping Governmental Activities Debt	95
11	Schedule of Debt Limitation	96
12	Legal Debt Margin Information	97
Demographic and Economic Statistics		
13	Demographic and Economic Statistics	98
14	Principal Employers	99
Operating Information		
15	Full-Time Equivalent Town Government Employees by Function/Program	100
16	Operating Indicators by Function/Program	101
17	Capital Asset Statistics by Function/Program	102



# TOWN OF ENFIELD

## LETTER OF TRANSMITTAL

December 23, 2015

Mr. Lee C. Erdmann  
Acting Town Manager  
Town of Enfield  
Enfield, Connecticut 06082

Dear Mr. Erdmann:

In accordance with Chapter V, Section 8 of the adopted charter for the Town of Enfield, I am submitting herewith the Comprehensive Annual Financial Report (CAFR) of the Town of Enfield for the fiscal year ended June 30, 2015.

State law requires that all local governments publish within six months of the close of each fiscal year a complete set of financial statements presented in conformity with accounting principles generally accepted in the United States of America (GAAP) and audited in accordance with generally accepted auditing standards by a firm of licensed certified public accountants. Pursuant to that requirement, we hereby issue the comprehensive annual financial report of the Town of Enfield for the fiscal year ended June 30, 2015.

This report consists of management's representations concerning the finances of the Town of Enfield. Consequently, management assumes full responsibility for the completeness and reliability of all of the information presented in this report. To provide a reasonable basis for making these representations, management of the Town of Enfield has established a comprehensive internal control framework that is designed both to protect the government's assets from loss, theft or misuse and to compile sufficient reliable information for the preparation of the Town of Enfield's financial statements in conformity with GAAP. Because the cost of internal controls should not outweigh their benefits, the Town of Enfield's comprehensive framework of internal controls has been designed to provide reasonable rather than absolute assurance that the financial statements will be free from material misstatement. As management, we assert that, to the best of our knowledge and belief, this financial report is complete and reliable in all material respects.

The Town of Enfield's financial statements have been audited by Blum, Shapiro & Company, P.C., a firm of licensed certified public accountants. The goal of the independent audit was to provide reasonable assurance that the financial statements of the Town of Enfield for the fiscal year ended June 30, 2015 are free of material misstatement. The independent audit involved examining, on a test basis, evidence supporting the amounts and disclosures in the financial statements; assessing the accounting principles used and significant estimates made by management; and evaluating the overall financial statement presentation. The independent auditor concluded, based upon the audit, that there was a reasonable basis for rendering an unmodified opinion that the Town of Enfield's financial statements for the fiscal year ended June 30, 2015 are fairly presented in conformity with GAAP. The independent auditors' report is presented as the first component of the financial section of this report.

The independent audit of the financial statements of the Town of Enfield was part of a broader, federally mandated "single audit" designed to meet the special needs of federal and state grantor agencies. The standards governing Single Audit engagements require the independent auditor to report not only on the fair presentation of the financial statements, but also on the audited Town's internal controls and compliance with legal requirements, with special emphasis on internal controls and legal requirements involving the administration of federal awards. These reports are available in the Town of Enfield's separately issued Single Audit Reports.

GAAP require that management provide a narrative introduction, overview and analysis to accompany the basic financial statements in the form of Management's Discussion and Analysis (MD&A). This letter of transmittal is designed to complement MD&A and should be read in conjunction with it. The Town of Enfield's MD&A can be found immediately following the report of the independent auditors.

### **Profile of the Town of Enfield**

The Town of Enfield is a suburb consisting of 33.8 square miles and located east of the Connecticut River along the Interstate 91 corridor, 18 miles north of Hartford, Connecticut, and 9 miles south of Springfield, Massachusetts, with a July 1, 2015 population of 44,699. Centrally located between Boston and New York City, and just a 15-minute drive from Bradley International Airport, Enfield is a short commute between major northeast economic markets.

The Town of Enfield operates under a council-manager form of government. Policy-making and legislative authority rest with a Town Council consisting of the mayor and ten other members. The Town Council is responsible, among other things, for passing ordinances, adopting the budget, appointing committees and hiring the Town Manager and Town attorney. The Town Manager, among other things, is responsible for carrying out the policies and ordinances of the Town Council, overseeing the day-to-day operations of the town and appointing the various department heads.

The Town of Enfield provides a full range of services, including police protection; the construction and maintenance of highways, streets, sanitation and other infrastructure; and recreational activities and cultural events.

The annual budget serves as the foundation for the Town of Enfield's financial planning and control. All agencies of the Town of Enfield are required to submit requests for appropriations to the Town Manager. The Town Manager uses these requests as the starting point for developing a proposed budget for presentation to the Town Council. The proposed budget is due to the Town Council no later than 75 days prior to the end of the fiscal year. The Town Council holds one or more public hearings on the budget not later than 60 days before the end of the fiscal year. Within 20 days of the final hearing, the Town Council adopts the budget by resolution.

### **Local Economy**

Enfield's location, transportation access, quality work force, land and business services have attracted many first-rate corporate citizens both large and small. The Town has a diversified commercial/industrial base of numerous manufacturing, research, engineering, distribution, service and retail facilities. A total of 1,600 businesses are located in Enfield, including the corporate headquarters for Massachusetts Mutual, and Retail Brand Alliance, Inc. Other major employers include Mass Mutual, LEGO Inc., Hallmark Cards and Eppendorf.

The 2013 Grand List, upon which the 2014-2015 budget was prepared, was relatively unchanged from the prior year. Currently, there are no major projects on the horizon that would significantly impact, either positively or negatively, the value of the Grand List.

### **Long Range Planning**

The Town updates its five year capital plan every year, as part of the annual budget process. Town staff evaluate the condition of the town's buildings and infrastructure in order to identify and prioritize projects that will require funding outside of the regular operating budget. The updated capital plan is included in the Annual Operating and Capital Budget. In fiscal year 2015 and 2016 the Town Officials budgeted \$2.115 million and \$3.092 million respectively for capital projects. In November 2015, voters approved spending \$36 million for reconstruction, repair and improvements to the Town's water pollution control facility.

In November 2014 voters approved spending an additional \$60 million on road reconstruction projects. For the last 14 years road reconstruction and maintenance has been and continues to be a top priority with Town Officials and the general public. Since fiscal year 2000 and most recently in November of 2014, voters have four times approved by referendum, borrowing for road reconstruction for a total of \$114 million. In the last ten years the town has borrowed to maintain school buildings and built a Senior Center in addition to the road reconstruction projects.

The Town also received referendum approval in November 2012 for borrowing to merge the two existing high schools to one location. The state has approved the school building project and will cover 72.14% of allowable costs. The Town share of the project is approximately \$35 million.



## **Awards and Acknowledgements**

The Government Finance Officers Association (GFOA) awarded a Certificate of Achievement for Excellence in Financial Reporting to the Town for its comprehensive annual financial report for the fiscal year ended June 30, 2014. This was the twenty-second consecutive year the Town has received this prestigious award, which is valid for a one-year period. In order to be awarded a certificate of achievement, the Town published an easily readable and efficiently organized comprehensive annual financial report. This report satisfies both generally accepted accounting principles and applicable legal requirements.

The Town believes its current comprehensive annual financial report continues to meet the program requirements, and will be submitting it to the GFOA to be considered for another certificate of achievement.

The preparation of this annual financial report could not have been accomplished without a major effort and commitment from all members of the finance department. I would also like to thank you and members of the Town Council for the continued interest and support in planning and conducting the financial affairs of the Town of Enfield in a responsible and progressive manner.

The Finance Department will continue pursuit of its goals: to promote the highest degree of public credibility and confidence in its operations; working to foster and maintain a local government environment which demonstrates fiscal accountability, efficiency, integrity, stability and relevant equity; and of course, the overall strive towards excellence.

Respectfully Submitted,

A handwritten signature in black ink, appearing to read "John A. Wilcox". The signature is fluid and cursive, with the first letters of the first and last names being capitalized and prominent.

John A. Wilcox  
Acting Finance Director



Government Finance Officers Association

**Certificate of  
Achievement  
for Excellence  
in Financial  
Reporting**

Presented to

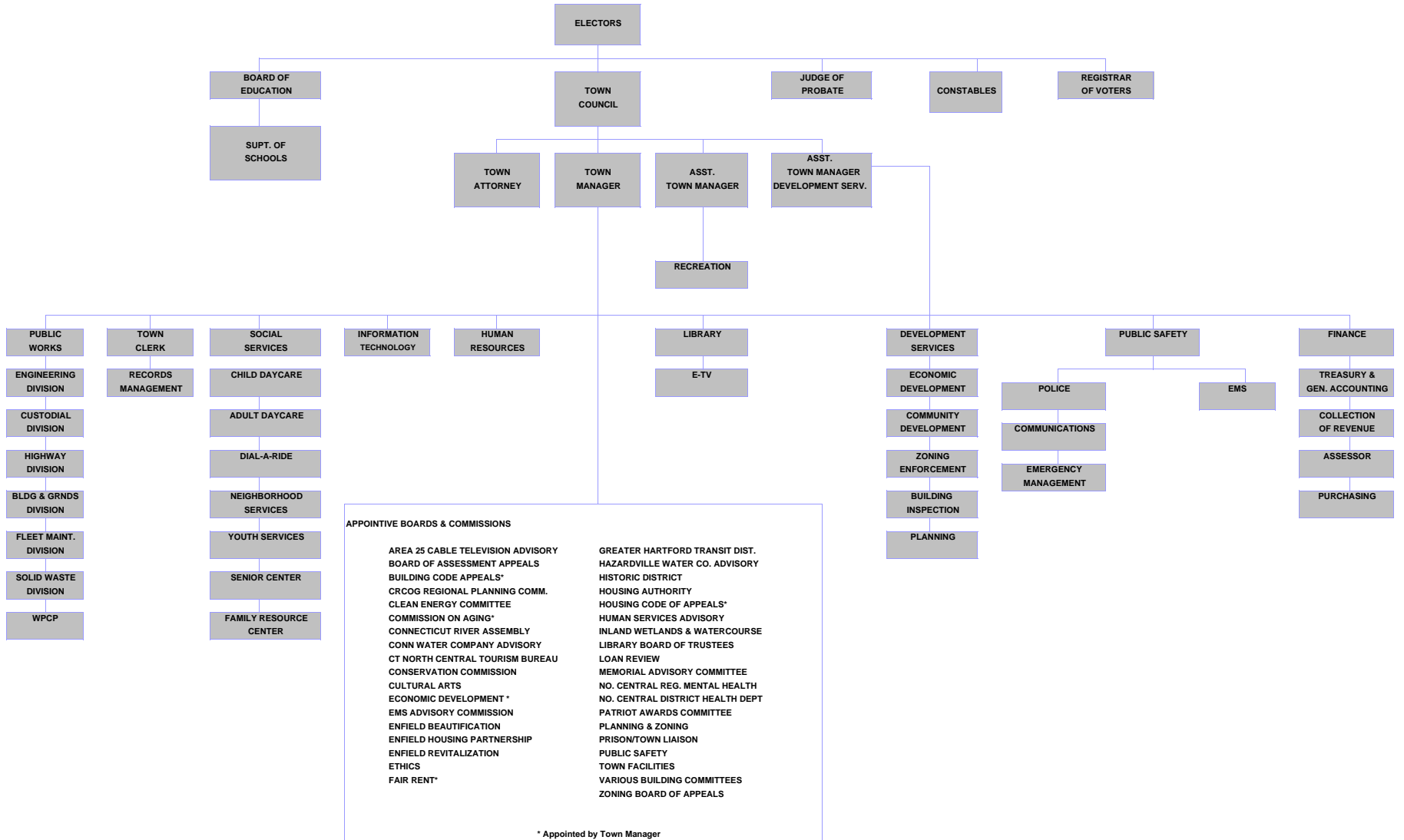
**Town of Enfield  
Connecticut**

For its Comprehensive Annual  
Financial Report  
for the Fiscal Year Ended

**June 30, 2014**

Executive Director/CEO

**TOWN OF ENFIELD, CONNECTICUT  
ORGANIZATIONAL CHART  
JUNE 30, 2015**



**TOWN OF ENFIELD, CONNECTICUT  
PRINCIPAL OFFICIALS  
JUNE 30, 2015**

**TOWN COUNCIL**

Scott R. Kaupin, Mayor  
William Lee, Deputy Mayor  
Joseph C. Bosco  
William J. Edgar, Jr.  
Edward N. Deni  
Thomas Arnone  
Gina L. Cekala  
Carol A. Hall  
Cynthia Mangini  
Gregory T. Stokes, Sr.  
Donna H. Szewczak

Town Manager  
Assistant Town Manager  
Director of Economic Development/Community Development  
Director of Emergency Medical Services  
Director of Finance  
Director of Human Resources  
Director of Information Systems  
Directory of Library  
Director of Public Safety  
Director of Public Works  
Director of Social Services  
Chief of Police  
Town Attorney

Matthew Coppler  
Derrick Kennedy  
Courtney Hendricson  
Gary Wiemokly  
Lynn Nenni  
Steven Bielenda  
Paul Russell  
Henry Dutcher  
Christopher W. Bromson  
Jonathan Bilmes  
Pam Brown  
Carl Sferrazza  
Kevin M. Deneen

**BOARD OF EDUCATION**

Thomas J. Sirard, Chairman  
David Wawer, Vice Chairman  
Vincent M. Grady, Secretary  
Stacy Thurston  
Peter Jonaitis  
Tina LeBlanc  
Lori Unghire  
Robert Peabody  
Timothy Neville  
Dr. Jeffrey A. Schumann, Superintendent of Schools

# **FINANCIAL SECTION**

# BlumShapiro

Accounting | Tax | Business Consulting

## **Independent Auditors' Report**

To the Members of the Town Council  
Town of Enfield, Connecticut

### **Report on the Financial Statements**

We have audited the accompanying financial statements of the governmental activities, each major fund and the aggregate remaining fund information of the Town of Enfield, Connecticut, as of and for the year ended June 30, 2015, and the related notes to the financial statements, which collectively comprise the Town of Enfield, Connecticut's basic financial statements as listed in the table of contents.

#### ***Management's Responsibility for the Financial Statements***

Management is responsible for the preparation and fair presentation of these financial statements in accordance with accounting principles generally accepted in the United States of America; this includes the design, implementation and maintenance of internal control relevant to the preparation and fair presentation of financial statements that are free from material misstatement, whether due to fraud or error.

#### ***Auditors' Responsibility***

Our responsibility is to express opinions on these financial statements based on our audit. We conducted our audit in accordance with auditing standards generally accepted in the United States of America and the standards applicable to financial audits contained in Government Auditing Standards, issued by the Comptroller General of the United States. Those standards require that we plan and perform the audit to obtain reasonable assurance about whether the financial statements are free of material misstatement.

An audit involves performing procedures to obtain audit evidence about the amounts and disclosures in the financial statements. The procedures selected depend on the auditors' judgment, including the assessment of the risks of material misstatement of the financial statements, whether due to fraud or error. In making those risk assessments, the auditors consider internal control relevant to the entity's preparation and fair presentation of the financial statements in order to design audit procedures that are appropriate in the circumstances, but not for the purpose of expressing an opinion on the effectiveness of the entity's internal control. Accordingly, we express no such opinion. An audit also includes evaluating the appropriateness of accounting policies used and the reasonableness of significant accounting estimates made by management, as well as evaluating the overall presentation of the financial statements.

We believe that the audit evidence we have obtained is sufficient and appropriate to provide a basis for our audit opinions.

## ***Opinions***

In our opinion, the financial statements referred to above present fairly, in all material respects, the respective financial position of the governmental activities, each major fund and the aggregate remaining fund information of the Town of Enfield, Connecticut, as of June 30, 2015 and the respective changes in financial position and, where applicable, cash flows thereof for the year then ended in accordance with accounting principles generally accepted in the United States of America.

## ***Change in Accounting Principle***

As discussed in Note 8 to the financial statements, during the fiscal year ended June 30, 2015, the Town adopted new accounting guidance, GASB Statement No. 68, *Accounting and Financial Reporting for Pensions*. The net position of the Town has been restated to recognize the net pension liability required in implementing GASB No. 68. Our opinion is not modified with respect to this matter.

## ***Other Matters***

### ***Required Supplementary Information***

Accounting principles generally accepted in the United States of America require that the management's discussion and analysis on pages 4 through 12, the budgetary comparison information on pages 58 through 63, the pension schedules on pages 64 through 69 be presented to supplement the basic financial statements. Such information, although not a part of the basic financial statements, is required by the Governmental Accounting Standards Board, which considers it to be an essential part of financial reporting for placing the basic financial statements in an appropriate operational, economic or historical context. We have applied certain limited procedures to the required supplementary information in accordance with auditing standards generally accepted in the United States of America, which consisted of inquiries of management about the methods of preparing the information and comparing the information for consistency with management's responses to our inquiries, the basic financial statements and other knowledge we obtained during our audit of the basic financial statements. We do not express an opinion or provide any assurance on the information because the limited procedures do not provide us with sufficient evidence to express an opinion or provide any assurance.

### ***Other Information***

Our audit was conducted for the purpose of forming opinions on the financial statements that collectively comprise the Town of Enfield, Connecticut's basic financial statements. The introductory section, combining and individual nonmajor fund financial statements and schedules, and statistical section are presented for purposes of additional analysis and are not a required part of the basic financial statements.

The combining and individual nonmajor fund financial statements and schedules are the responsibility of management and were derived from and relate directly to the underlying accounting and other records used to prepare the basic financial statements. Such information has been subjected to the auditing procedures applied in the audit of the basic financial statements and certain additional procedures, including comparing and reconciling such information directly to the underlying accounting and other records used to prepare the basic financial statements or to the basic financial statements themselves, and other additional procedures in accordance with auditing standards generally accepted in the United States of America. In our opinion, the combining and individual nonmajor fund financial statements and schedules are fairly stated in all material respects in relation to the basic financial statements as a whole.

The introductory and statistical sections have not been subjected to the auditing procedures applied in the audit of the basic financial statements, and, accordingly, we do not express an opinion or provide any assurance on them.

**Other Reporting Required by *Government Auditing Standards***

In accordance with *Government Auditing Standards*, we have also issued our report dated December 23, 2015 on our consideration of the Town of Enfield, Connecticut's internal control over financial reporting and on our tests of its compliance with certain provisions of laws, regulations, contracts, and grant agreements and other matters. The purpose of that report is to describe the scope of our testing of internal control over financial reporting and compliance and the results of that testing, and not to provide an opinion on internal control over financial reporting or on compliance. That report is an integral part of an audit performed in accordance with *Government Auditing Standards* in considering the Town of Enfield, Connecticut's internal control over financial reporting and compliance.

*Blum, Shapiro & Company, P.C.*

West Hartford, Connecticut  
December 23, 2015



**TOWN OF ENFIELD, CONNECTICUT  
MANAGEMENT'S DISCUSSION AND ANALYSIS  
JUNE 30, 2015**

This discussion and analysis of the Town of Enfield, Connecticut's (the Town) financial performance is provided by management to provide an overview of the Town's financial activities for the fiscal year ended June 30, 2015. Please read this MD&A in conjunction with the transmittal letter and the Town's financial statements. All amounts in this section are reported in thousands unless otherwise noted.

**Financial Highlights**

- Net position of our governmental activities increased by \$25,804 or 11.96%.
- During the year, the Town had expenses and transfers that were \$25,804 less than the \$175,984 generated in tax and other revenues for governmental programs.
- Total cost of all of the Town's programs was \$150,180.
- The General Fund reported a fund balance this year of \$25,802 an increase of \$2,337 or 10% over the prior year.
- General fund revenues exceed budgetary estimates by \$87. Expenditures were kept within spending limits, with a positive variance of \$479.

**Overview of the Financial Statements**

This annual report consists of a series of financial statements. The statement of net position and the statement of activities on pages 13 and 14 provide information about the activities of the Town as a whole and present a long-term view of the Town's finances. Fund financial statements are presented on pages 15 through 23. For governmental activities, the statements show how services were financed in the short term as well as what remains for future spending. Fund financial statements also report the Town's operations in more detail than the government wide statements by providing information about the Town's most significant funds. The remaining statements provide financial information about activities for which the Town acts solely as a trustee or agent for the benefit of those outside of the government.

**Government-Wide Financial Statements**

The analysis of the Town as a whole begins on pages 13 and 14. The statement of net position and the statement of activities report information about the Town as a whole and about its activities for the current period. These statements include all assets and liabilities using the accrual basis of accounting, which is similar to the accounting used by most private sector companies. All of the current year's revenues and expenses are taken into account regardless of when cash is received or paid. These two statements report the Town's net position and changes in them. The Town's net position, the difference between assets and liabilities, is one way to measure the Town's financial health, or financial position. Over time, increases or decreases in the Town's net assets are indicators of whether its financial health is improving or deteriorating. The reader needs to consider other non-financial factors, however, such as changes in the Town's property tax base and the condition of the Town's capital assets, to assess the overall financial health of the Town.

In the statement of net assets and the statement of activities, the Town reports its activities as follows:

Governmental Activities - The Town's basic services are reported here, including general government, public safety, public works, health and social services, library, planning and development and education. Property taxes and intergovernmental revenues finance most of these activities.

## **Fund Financial Statements**

The fund financial statements begin on page 15 and provide detailed information about the most significant funds - not the Town as a whole. Some funds are required to be established by Charter. However, the Town administration establishes many other funds to help control and manage financial activities for particular purposes like the Capital Nonrecurring fund and Community Development fund. The Town's funds are divided into three categories: governmental, proprietary and fiduciary.

- **Governmental Funds** (*pages 15 through 18*) - Most of the Town's basic services are reported in governmental funds, which focus on how money flows into and out of those funds and the balances left at year end that are available for spending. These funds are reported using an accounting method called modified accrual accounting, which measures cash and all other financial assets that can readily be converted to cash. The governmental fund statements provide a detailed short term view of the Town's general government operations and the basic services it provides. Governmental fund information helps you determine whether there are more or fewer financial resources that can be spent in the near future to finance the Town's programs. The differences between governmental activities reported in the statement of net position and the statement of activities and governmental funds is described in a reconciliation between fund balances - all governmental funds and net position of governmental activities on pages 17 and 19.
- **Proprietary Funds** (*pages 19, 20 and 21*) - When the Town charges customers for the services it provides, whether to outside customers or to other units of the Town, these services are generally reported in proprietary funds. Proprietary funds are reported in the same way that all activities are reported in the statement of net position and the statement of activities. Internal service funds (a component of proprietary funds) are used to report activities that provide supplies and services for the Town's other programs and activities - such as the Town's Information Technology Fund.
- **Fiduciary Funds** (*pages 22 and 23*) - The Town is the trustee, or fiduciary, for its employees' pension plans. It is also responsible for other assets that, because of a trust arrangement, can be used only for the trust beneficiaries. All of the Town's fiduciary activities are reported in separate statements of fiduciary net position and changes in fiduciary net position. These activities are excluded from the Town's other financial statements because the Town cannot use these assets to finance its operations. The Town is responsible for ensuring that the assets reported in these funds are used for their intended purposes.

## Government-Wide Financial Analysis

The Town's combined total net position increase by \$25,804 from a year ago, changing from \$215,699 to \$241,503. The following analysis focuses on the net position (Table 1) and changes in net position (Table 2) of the Town's governmental activities.

**TABLE 1  
NET POSITION**

	<b>Governmental Activities</b>	
	<b>2015</b>	<b>2014 (Restated)</b>
Current and other assets	\$ 68,655	\$ 56,253
Capital assets	268,085	225,261
Total assets	<u>336,740</u>	<u>281,514</u>
Deferred outflows of resources	<u>4,554</u>	<u>          </u>
Current liabilities	32,232	24,333
Noncurrent liabilities	64,358	40,679
Total liabilities	<u>96,590</u>	<u>65,012</u>
Deferred inflows of resources	<u>3,201</u>	<u>803</u>
Net investment in capital assets	221,663	192,678
Restricted	1,758	1,782
Unrestricted	<u>18,082</u>	<u>21,239</u>
Total Net Position	\$ <u>241,503</u>	\$ <u>215,699</u>

The largest component of the net position is the investment in capital assets (buildings, infrastructure and equipment), which is presented less outstanding debt related to acquiring the assets. This portion of the net position is not available for spending. Unrestricted net position - the part of net position that can be used to finance day to day operations without constraints established by debt covenants, enabling legislation, or other legal requirements, decreased \$3,157 from the prior fiscal year.

The change in net position can also be analyzed by looking at the difference between revenues and program expenses. The Town's total revenues were \$175,984, an increase of \$22,733 over the prior year. The total cost of all programs and services was \$150,180, a decrease of \$787 over the prior year. A more detailed discussion of fiscal year 2015 activity follows in the next sections.

**TABLE 2  
CHANGE IN NET POSITION**

	<b>Governmental Activities</b>	
	<b>2015</b>	<b>2014</b>
Revenues:		
Program revenues:		
Charges for services	\$ 14,124	\$ 14,640
Operating grants and contributions	46,447	48,368
Capital grants and contributions	28,935	3,986
General revenues:		
Property taxes	84,230	84,360
Grants and contributions not restricted to specific programs	2,065	1,708
Investment income	183	189
Total revenues	<u>175,984</u>	<u>153,251</u>
Expenses:		
General government	9,040	9,552
Public safety	15,315	16,121
Public works	26,430	25,829
Health and social services	9,600	9,157
Library	1,858	1,809
Planning and development	1,518	1,234
Education	83,736	86,343
Interest on long-term debt	2,683	922
Total expenses	<u>150,180</u>	<u>150,967</u>
Change in Net Position	<u>\$ 25,804</u>	<u>\$ 2,284</u>

Table 3 presents the cost of each of the Town's five largest programs - public safety, public works, education, and health and social services - as well as each program's net cost (total cost less revenues generated by the activities). The net cost shows the financial burden that was placed on the Town's taxpayers by each of these functions.

**TABLE 3  
GOVERNMENTAL ACTIVITIES**

	<u>Total Cost of Services</u>		<u>Net Cost of Services</u>	
	<u>2015</u>	<u>2014</u>	<u>2015</u>	<u>2014</u>
General government	\$ 9,040	\$ 9,552	\$ 3,537	\$ 3,077
Public safety	15,315	16,121	14,553	15,401
Public works	26,430	25,829	20,642	23,384
Education	83,736	86,343	12,622	35,421
Health and social services	9,600	9,157	3,290	2,759
All others	<u>6,059</u>	<u>3,965</u>	<u>6,030</u>	<u>3,931</u>
Total	<u>\$ 150,180</u>	<u>\$ 150,967</u>	<u>\$ 60,674</u>	<u>\$ 83,973</u>

The total cost of services decreased \$787 or .5% from 2014 to 2015. There was no change in services provided by the Town. The primary cost drivers for the fiscal year were due to decreases in General Government, Public Safety and Board of Education spending.

**Town Funds Financial Analysis**

**Governmental Funds**

As the Town completed the year, its governmental funds (as presented in the balance sheet - page 15) reported a combined total fund balance of \$21,973 which is a 40% increase from last year's total of \$15,833. The fund balance in the general fund increased \$2,337 from the prior year. Page 41 shows the details of the governmental fund balances. More detail with respect to activity in the General Fund is presented in the General Fund Budgetary Highlights section.

There continues to be a deficit in the Water Pollution Control Fund, which decreased by \$119 during the year. \$2,492 is reserved in the General Fund nonspendable fund balance to cover part of the deficit. In fiscal year 2013-2014 the Council voted to convert the funding basis for the WPCA from ad valorem to user fee, in order to raise revenue to foot the cost of approximately \$35 million in upgrades to the plant. The change to user fee went into effect January 1, 2014. The rates were structured to provide enough revenue to pay back the general fund \$300 a year over a ten year period, and to support anticipated debt repayment of approximately \$31 million for plant upgrades and repairs.

The fund balance in the Bonded Projects Fund has a deficit of \$6,504, a decrease of \$4,350 over the prior year. The deficit is a result of spending associated with the "Roads 2015" paving program and the High School Consolidation project. Bond anticipation notes were issued during the year in the amount of \$20,000 to cover deficits in cash flows. The deficit will be covered in fiscal year 2015-2016 with the issuance of a bond for \$20 million.

The fund balance in the Capital Nonrecurring Fund decreased \$251, to \$3,595. Spending in the Capital and Nonrecurring Fund in fiscal year 2015 was \$2,511 compared to \$5,101 in fiscal year 2014. The Town records purchase of equipment, capital grants and major maintenance projects in this fund. Spending has decreased from prior years as one time grants are completed.

The fund balances in the Nonmajor Governmental Funds is \$2,760, a decrease of \$177 over the prior year. Pages 77-78 show the activity details for Nonmajor governmental funds. Spending activity is primarily education related and pertains to grants, student activity and cafeteria expenditures and revenues.

Fund balance in the governmental funds is classified according to the strength of the spending constraints for which it can be used, and are listed on the balance sheet according to the strength of the restriction, from most to least restrictive. Nonspendable fund balance represents 30% of the total fund balance. Amounts classified in this category include inventory and the corpus of endowment funds, prepaid interest and \$2,492 that has been advanced to the Water Pollution Control Fund. Restricted fund balance is 5% of the total fund balance and represents donations and grants whose spending is restricted to a particular purpose by the donor or granting authority. Committed fund balance is 50% of the total fund balance and represents amounts committed by the Town Council for a particular purpose. The amounts in this category are committed primarily through the budget making process or by resolution. Assigned fund balance represents encumbrances outstanding at year end, the remaining Board of Education budget that will be appropriated in fiscal year 2015 and the amount used to balance the fiscal year 2015 budget. Assigned fund balance represents 4% of the total fund balance. The unassigned fund balance, which is available for spending, is 10%. As mentioned earlier in this discussion, the WPCA fund and Bonded Projects fund are currently running deficits thereby reducing the unassigned fund balance to \$6,724. The deficit in the Bonded Projects Fund will be eliminated with future bonding and the deficit in the Water Pollution Control Fund will be eliminated over the next ten years through revenue raised by user fees.

### **Proprietary Funds**

The Town of Enfield utilizes internal service funds to report the costs associated with liability insurance, health insurance and information technology for the Board of Education and the Town. Details of the activities in these funds are shown on pages 80-82. The net position of these funds decreased \$3,478 or 52%, to \$3,168. The decrease was primarily due to higher than estimated health insurance claims.

### **General Fund Budgetary Highlights**

General fund revenues and expenditures are presented on a budgetary basis on pages 58-64. Note that for budgetary purposes, the general fund excludes the funds that were previously classified as special revenue, prior to the implementation of GASB 54.

### **Revenue Variances**

Better than expected collections resulted in a positive variance of \$1,738 for all tax collections. Tax collections are currently budgeted on a cash basis and included \$300 for prior year collections. During the year the tax office conducted a "Tax Collector" sale. The proceeds of the sale contributed an additional \$231 to delinquent taxes and interest collected. Real estate collections were budgeted at 98.5%, motor vehicle at 94% and personal property at 97%. The blended tax collection rate for current year taxes was 98.00%, which represents a slight increase from the prior year collection rate of 97.95%.

Variances in intergovernmental revenue were caused by changes made by the state during the year to individual grant line items. In addition, the Town adopts their budget prior to the States adoption of their budget. Therefore, changes made by the State to grant allocations after the Town adopts its budget can result in variances. Intergovernmental revenue had a net negative variance of \$130.

Charges for services had a total positive variance of \$395. Budgets in this category are estimated based on historical averages and normally vary from year to year. The largest variance occurred in the building and mechanical permit budget. Expansions by Solar City fueled a positive variance of \$548 from the original budget.

Interest on investments had a negative variance of \$27. General fund investments are limited by state statute to risk free instruments as specified in Note 3. Unfavorable economic conditions have kept investment interest rates low.

The general fund had a total positive revenue variance of \$87.

## **Expenditure Variances**

Budgetary expenditures had a total positive variance of \$479. The largest variances occurred in the following departments: General Government \$120, Board of Education \$139, Public Works \$84, and Public Safety \$65.

Additional appropriations from fund balance in the amount of \$1,890 were made as follows:

During 2014-2015 council deliberations the Town Council agreed they would allow the Board of Education to roll forward the remaining balance of their 2014 budget to 2015, resulting in an additional appropriation of \$131. Additional appropriations were also made for Police salaries and overtime \$270, Public Works salaries and overtime \$521, workers compensation insurance \$171, utilities \$81 and Land Use Commissions \$15.

## **Capital Asset and Debt Administration**

### **Capital Assets**

At June 30, 2015, the Town had \$268,085 invested in a broad range of capital assets, including land, buildings, building improvements, machinery and equipment, vehicles and infrastructure (roads, sewer lines, sidewalks) - Note 3(C). This amount represents a net increase (including additions and deductions) of \$42,824 over the prior year.

**TABLE 4**  
**CAPITAL ASSETS (Net of Depreciation)**

	<b>Governmental</b>	
	<b>Activities</b>	
	<b>2015</b>	<b>2014</b>
Land	\$ 12,255	\$ 12,255
Construction in progress	45,015	7,732
Buildings	15,589	16,150
Building improvements	47,365	48,847
Machinery and equipment	8,171	8,821
Vehicles	7,385	7,677
Infrastructure	<u>132,305</u>	<u>123,779</u>
Total	<u>\$ 268,085</u>	<u>\$ 225,261</u>

This year's major additions included:

- The continuation of a variety of road rehabilitation projects - "Roads 2010" in the amount of \$11,963.
- Purchase of eight police vehicles in the amount of \$257.
- Purchase of an ambulance for EMS for \$180.
- Purchase of two vans and two trucks for Public Works for \$169.
- Purchase of four grinder pumps and a sewer camera for \$289.

More detailed information about the Town's capital assets is presented in Note 3(C) in the financial statements.

**Long-Term Debt**

At June 30, 2015, the Town had \$41,590 in bonds outstanding compared to 19,450 last year - an increase of 53% as shown in Table 5.

**TABLE 5  
OUTSTANDING DEBT**

	<b>Governmental</b>	
	<b>Activities</b>	
	<b>2015</b>	<b>2014</b>
General obligation bonds - Town	\$ 38,434	\$ 15,168
General obligation bonds - School improvements	<u>3,156</u>	<u>4,282</u>
Total	<u>\$ 41,590</u>	<u>\$ 19,450</u>

The Town maintains an "AA/Stable" rating from Standard Poor's and an "Aa2" rating from Moody's for general obligation debt.

State statutes limit the amount of general obligation debt a governmental entity may issue to seven times total tax collections including interest and lien fees and the tax relief for elderly freeze grant. The current debt limitation for the Town is \$665,616 which significantly exceeds the Town's outstanding general obligation debt.

At the end of fiscal 2015 the Town was authorized to bond an additional \$35 million for the High School Consolidation projects, which is currently underway.

In November 2014, voters approved borrowing an additional \$60 million for the Roads 2015 road reconstruction program.

Other obligations include accrued vacation pay and sick leave. More detailed information about the Town's long term liabilities is presented in Note 3(E) of the financial statements.



## **ECONOMIC FACTORS AND NEXT YEAR'S BUDGETS AND RATES**

The Town's elected and appointed officials considered many factors when setting the fiscal year 2015-2016 budget. Overall economic conditions as well as citizens' ability to sustain an increase in taxes continue to be primary concerns of town officials. The mill rate for the Town was unchanged at 23.88 for fiscal years 2008-2012. The mill rate for the 2012-2013 budget increased to 27.84. The increase in the mill rate was the result of a town wide revaluation in which property values dropped an average of 13%. Property values for residential property dropped an average of 15% and commercial property values dropped an average of 10%. After factoring in the change in the grand list, the increase in the mill rate was .90 mills.

Council set the mill rate for the 2014-2015 budget at 29.13, an decrease of .13 mills over the prior year. In addition the Town transitioned from funding the WPC on an ad valorem to user fee basis. Town staff estimate the average home will pay approximately \$216 in sewer use fees.

The mill rate for fiscal year 2015-2016 is set at 29.89, an increase of .76 mills from the prior year. General fund spending increased to \$124,712, an increase of 3.94% over the fiscal year 2015 budget. The largest increases were in Board of Education \$1,621, Public Works of \$794, and Public Safety of \$487. Additionally, debt service payments increased by \$900.

The grand list has remained stable, with no meaningful growth or property transfers.

Unemployment (not seasonally adjusted) in the Town as of October 2015 was 4.5% versus 5.8% a year ago. The State's unemployment rate is 5.1% and the national rate is 5.0% for the same time period.

### **Contacting the Town's Financial Management**

This financial report is designed to provide citizens, taxpayers, customers, investors and creditors with a general overview of the Town's finances and to show the Town's accountability for the money it receives. If you have questions about this report or need additional financial information, contact the Acting Finance Director, John Wilcox, Town of Enfield, 820 Enfield Street, Enfield, Connecticut, 06082.

# **BASIC FINANCIAL STATEMENTS**

**TOWN OF ENFIELD, CONNECTICUT**  
**STATEMENT OF NET POSITION**  
**JUNE 30, 2015**

(In Thousands)

	<b>Governmental Activities</b>
<b>Assets:</b>	
Cash and cash equivalents	\$ 42,337
Investments	12,154
Receivables, net	11,959
Prepaid items	2,118
Inventories	87
Capital assets, nondepreciable	57,270
Capital assets, net of accumulated depreciation	210,815
Total assets	<u>336,740</u>
<b>Deferred Outflows of Resources:</b>	
Changes in projected pension investment earnings	3,316
Changes in pension actuarial experience	1,238
Total deferred outflows of resources	<u>4,554</u>
<b>Liabilities:</b>	
Accounts payable and accrued liabilities	11,857
Unearned revenue	375
Bond anticipation notes payable	20,000
Noncurrent liabilities, due within one year	5,682
Noncurrent liabilities, due in more than one year	58,676
Total liabilities	<u>96,590</u>
<b>Deferred Inflows of Resources:</b>	
Deferred charge on refunding	278
Changes in pension actuarial assumptions	423
Advance property tax collections	2,500
Total deferred inflows of resources	<u>3,201</u>
<b>Net Position:</b>	
Net investment in capital assets	221,663
Restricted for:	
Trust purposes:	
Expendable	26
Non-expendable	37
Loans	1,695
Unrestricted	<u>18,082</u>
Total Net Position	<u>\$ 241,503</u>

The accompanying notes are an integral part of the financial statements

**TOWN OF ENFIELD, CONNECTICUT  
STATEMENT OF ACTIVITIES  
FOR THE YEAR ENDED JUNE 30, 2015**

(In Thousands)

<u>Functions/Programs</u>	<u>Expenses</u>	<u>Program Revenues</u>		<u>Capital Grants and Contributions</u>	<u>Net Revenues (Expenses) and Changes in Net Position</u>
		<u>Charges for Services</u>	<u>Operating Grants and Contributions</u>		<u>Governmental Activities</u>
Governmental Activities:					
General government	\$ 9,040	\$ 3,134	\$ 2,369	\$	\$ (3,537)
Public safety	15,315	603	114	45	(14,553)
Public works	26,430	5,058	396	334	(20,642)
Health and social services	9,600	4,219	64	2,027	(3,290)
Library	1,858	16	13		(1,829)
Planning and development	1,518				(1,518)
Education	83,736	1,094	43,491	26,529	(12,622)
Interest expense	2,683				(2,683)
Total governmental activities	<u>150,180</u>	<u>14,124</u>	<u>46,447</u>	<u>28,935</u>	<u>(60,674)</u>
Total	\$ <u>150,180</u>	\$ <u>14,124</u>	\$ <u>46,447</u>	\$ <u>28,935</u>	<u>(60,674)</u>
General revenues:					
Property taxes					84,230
Grants and contributions not restricted to specific programs					2,065
Investment income					183
Total general revenues					<u>86,478</u>
Change in net position					25,804
Net Position at Beginning of Year, As Restated					<u>215,699</u>
Net Position at End of Year					\$ <u>241,503</u>

The accompanying notes are an integral part of the financial statements

**TOWN OF ENFIELD, CONNECTICUT**  
**BALANCE SHEET - GOVERNMENTAL FUNDS**  
**JUNE 30, 2015**

(In Thousands)

	<u>General</u>	<u>Water Pollution Control</u>	<u>Bonded Projects</u>	<u>Capital Nonrecurring</u>	<u>Nonmajor Governmental Funds</u>	<u>Total Governmental Funds</u>
<b>ASSETS</b>						
Cash and cash equivalents	\$ 14,842	\$ 846	\$ 19,890	\$ 925	\$ 3,026	\$ 39,529
Investments	9,019			2,664	69	11,752
Receivables, net	7,969	1,180	636	135	1,973	11,893
Due from other funds	3,058			291	8	3,357
Advances to other funds	2,492					2,492
Prepaid items	2,101					2,101
Inventory					87	87
Total Assets	<u>\$ 39,481</u>	<u>\$ 2,026</u>	<u>\$ 20,526</u>	<u>\$ 4,015</u>	<u>\$ 5,163</u>	<u>\$ 71,211</u>
<b>LIABILITIES, DEFERRED INFLOWS OF RESOURCES AND FUND BALANCES</b>						
Liabilities:						
Accounts payable and accrued liabilities	\$ 2,877	\$ 699	\$ 5,609	\$ 405	\$ 68	\$ 9,658
Due to other funds	1,482	1,578	953		472	4,485
Advances from other funds		2,492				2,492
Bond anticipation notes payable			20,000			20,000
Unearned revenue	75		132		168	375
Total liabilities	<u>4,434</u>	<u>4,769</u>	<u>26,694</u>	<u>405</u>	<u>708</u>	<u>37,010</u>
Deferred Inflows of Resources:						
Unavailable revenue - property taxes	5,555					5,555
Unavailable revenue - sewer user fees		937				937
Unavailable revenue - EMS receivable	1,168					1,168
Unavailable revenue - grants receivables	22		336	15		373
Unavailable revenue - loans receivables					1,695	1,695
Advance property tax collections	2,500					2,500
Total deferred inflows of resources	<u>9,245</u>	<u>937</u>	<u>336</u>	<u>15</u>	<u>1,695</u>	<u>12,228</u>
Fund Balances:						
Nonspendable	4,593				124	4,717
Restricted					801	801
Committed	2,130			3,595	1,835	7,560
Assigned	2,171					2,171
Unassigned	16,908	(3,680)	(6,504)			6,724
Total fund balances	<u>25,802</u>	<u>(3,680)</u>	<u>(6,504)</u>	<u>3,595</u>	<u>2,760</u>	<u>21,973</u>
Total Liabilities, Deferred Inflows of Resources and Fund Balances	<u>\$ 39,481</u>	<u>\$ 2,026</u>	<u>\$ 20,526</u>	<u>\$ 4,015</u>	<u>\$ 5,163</u>	<u>\$ 71,211</u>

(Continued on next page)

**TOWN OF ENFIELD, CONNECTICUT**  
**BALANCE SHEET - GOVERNMENTAL FUNDS (CONTINUED)**  
**JUNE 30, 2015**  
(In Thousands)

Reconciliation of Balance Sheet - Governmental Funds to Statement of Net Position:

Amounts reported for governmental activities in the statement of net position (Exhibit I) are different from the governmental fund balance sheet. The details of this difference are as follows:

Total fund balances (Exhibit III)	\$ 21,973
Capital assets used in governmental activities are not financial resources and, therefore, are not reported in the funds:	
Governmental capital assets	\$ 387,141
Less accumulated depreciation	<u>(119,056)</u>
	268,085
Internal service funds are used by management to charge costs of risk management to individual funds. The assets and liabilities of the internal service funds are reported with governmental activities in the statement of net position.	
	3,168
Other long-term assets and deferred outflows of resources are not available to pay for current period expenditures and, therefore, are unavailable in the funds:	
Property tax receivables	3,688
Interest on property taxes	1,867
Sewer use receivable	937
EMS receivable	1,168
Grants receivable	373
Housing loans	1,695
Deferred outflows related to changes in projected pension investment earnings	3,316
Deferred outflows related to pension actuarial experience	1,238
Some liabilities and deferred inflows of resources, including bonds payable, are not due and payable in the current period and, therefore, are not reported in the funds:	
Bonds and sewer notes payable	(41,590)
Bond premium	(1,382)
Deferred charge on refunding	(278)
Compensated absences	(7,163)
Accrued interest payable	(946)
Capital lease	(2,922)
Landfill closure	(195)
Claims payable	(691)
Net pension liability	(8,205)
Deferred inflows related to changes in pension actuarial assumptions	(423)
Net OPEB obligation	<u>(2,210)</u>
Net Position of Governmental Activities (Exhibit I)	<u>\$ 241,503</u>

The accompanying notes are an integral part of the financial statements

**TOWN OF ENFIELD, CONNECTICUT**  
**STATEMENT OF REVENUES, EXPENDITURES AND CHANGES**  
**IN FUND BALANCES - GOVERNMENTAL FUNDS**  
**FOR THE YEAR ENDED JUNE 30, 2015**

(In Thousands)

	General	Water Pollution Control	Bonded Projects	Capital Nonrecurring	Nonmajor Governmental Funds	Total Governmental Funds
Revenues:						
Property taxes	\$ 84,366	\$ 139	\$ 27,165	\$ 382	\$ 5,379	\$ 84,505
Intergovernmental	44,638	264	27,165	382	5,379	77,828
Charges for services	7,726	4,203		38	909	12,876
Contributions and donations	232				43	275
Investment income	104		27	38	13	182
Other revenues		3		37	5	45
Total revenues	<u>137,066</u>	<u>4,609</u>	<u>27,192</u>	<u>495</u>	<u>6,349</u>	<u>175,711</u>
Expenditures:						
Current:						
General government	6,758				339	7,097
Public safety	13,543				172	13,715
Public works	16,975	4,351				21,326
Health and social services	8,917					8,917
Library	1,694				30	1,724
Planning and development	1,418					1,418
Intergovernmental and interagency	442					442
Education	73,482				5,858	79,340
Non-departmental	6,225					6,225
Capital outlay			48,397	2,511		50,908
Debt service	4,869		39			4,908
Total expenditures	<u>134,323</u>	<u>4,351</u>	<u>48,436</u>	<u>2,511</u>	<u>6,399</u>	<u>196,020</u>
Excess (Deficiency) of Revenues over Expenditures	<u>2,743</u>	<u>258</u>	<u>(21,244)</u>	<u>(2,016)</u>	<u>(50)</u>	<u>(20,309)</u>
Other Financing Sources (Uses):						
Bond issuance			25,000			25,000
Bond premiums	1,449					1,449
Transfers in	557		594	2,265	53	3,469
Transfers out	(2,412)	(377)		(500)	(180)	(3,469)
Net other financing sources (uses)	<u>(406)</u>	<u>(377)</u>	<u>25,594</u>	<u>1,765</u>	<u>(127)</u>	<u>26,449</u>
Net Change in Fund Balances	2,337	(119)	4,350	(251)	(177)	6,140
Fund Balances at Beginning of Year	<u>23,465</u>	<u>(3,561)</u>	<u>(10,854)</u>	<u>3,846</u>	<u>2,937</u>	<u>15,833</u>
Fund Balances at End of Year	<u>\$ 25,802</u>	<u>\$ (3,680)</u>	<u>\$ (6,504)</u>	<u>\$ 3,595</u>	<u>\$ 2,760</u>	<u>\$ 21,973</u>

(Continued on next page)

**TOWN OF ENFIELD, CONNECTICUT**  
**STATEMENT OF REVENUES, EXPENDITURES AND CHANGES**  
**IN FUND BALANCES - GOVERNMENTAL FUNDS (CONTINUED)**  
**FOR THE YEAR ENDED JUNE 30, 2015**

(In Thousands)

Reconciliation of Statement of Revenues, Expenditures and Changes in Fund Balances - Governmental Funds to Statement of Activities:

Amounts reported for governmental activities in the statement of activities (Exhibit II) are different due to:

Net change in fund balances - total governmental funds (Exhibit IV) \$ 6,140

Governmental funds report capital outlays as expenditures. However, in the statement of activities, the cost of those assets is allocated over their estimated useful lives and reported as depreciation expense. This is the amount by which capital outlays exceeded depreciation in the current period:

Capital outlay	50,414
Depreciation expense	(7,293)

Donations of capital assets increase net position in the statement of activities, but do not appear in the governmental funds because they are not financial resources. 45

The statement of activities reports losses arising from the trade-in of existing capital assets to acquire new capital assets. Conversely, governmental funds do not report any gain or loss on a trade-in of capital assets. (342)

Revenues in the statement of activities that do not provide current financial resources are not reported as revenues in the funds, and revenues recognized in the funds are not reported in the statement of activities:

Property tax receivable - accrual basis change	(50)
Property tax interest revenue - accrual basis change	2
Sewer use receivable - accrual basis change	675
EMS receivable - accrual basis change	447
Grants receivable - accrual basis change	(478)
Loans receivable - accrual basis change	(24)
Changes in deferred outflows related to changes in projected pension investment earnings	3,316
Changes in deferred outflows related to pension actuarial experience	1,238

The issuance of long-term debt (e.g., bonds, leases) provides current financial resources to governmental funds, while the repayment of the principal of long-term debt consumes the current financial resources of governmental funds. Neither transaction, however, has any effect on net position. Also, governmental funds report the effect of premiums, discounts and similar items when debt is first issued, whereas these amounts are deferred and amortized in the statement of activities. The details of these differences in the treatment of long-term debt and related items are as follows:

Issuance of bonds	(25,000)
Premium on bond issuance	(1,449)
Bond principal payments	2,860
Capital lease payments	1,711

Some expenses reported in the statement of activities do not require the use of current financial resources and, therefore, are not reported as expenditures in governmental funds:

Compensated absences	(179)
Change in accrued interest	(758)
Amortization of bond premiums	67
Amortization of deferred charge on refunding	52
Claims payable	16
Landfill closure	15
Net pension liability	(854)
Changes in deferred inflows related to changes in pension actuarial assumptions	(423)
Net OPEB expense	(866)

Internal service funds are used by management to charge costs to individual funds. The net revenue of certain activities of internal service funds is reported with governmental activities (3,478)

Change in Net Position of Governmental Activities (Exhibit II) \$ 25,804

The accompanying notes are an integral part of the financial statements



**TOWN OF ENFIELD, CONNECTICUT  
STATEMENT OF NET POSITION  
PROPRIETARY FUNDS  
JUNE 30, 2015**

(In Thousands)

	<u>Governmental Activities</u>
	<u>Internal Service Funds</u>
Assets:	
Current assets:	
Cash and cash equivalents	\$ 2,808
Investments	402
Accounts receivable	66
Prepaid expenses	17
Due from other funds	<u>1,183</u>
Total assets	<u>4,476</u>
Liabilities:	
Current liabilities:	
Accounts payable	129
Claims payable	1,124
Due to other funds	<u>55</u>
Total liabilities	<u>1,308</u>
Net Position:	
Unrestricted	<u>\$ 3,168</u>

The accompanying notes are an integral part of the financial statements

**TOWN OF ENFIELD, CONNECTICUT  
STATEMENT OF REVENUES, EXPENSES AND CHANGES IN NET POSITION  
PROPRIETARY FUNDS  
FOR THE YEAR ENDED JUNE 30, 2015**

(In Thousands)

	<b>Governmental Activities Internal Service Funds</b>
Operating Revenues:	
Charges for services	\$ 19,982
Intergovernmental	39
Total operating revenues	<u>20,021</u>
Operating Expenses:	
Health insurance claims	18,484
Risk management claims	1,268
Technology services	3,753
Total operating expenses	<u>23,505</u>
Operating Loss	(3,484)
Nonoperating Revenue:	
Investment income	<u>6</u>
Change in Net Position	(3,478)
Net Position at Beginning of Year	<u>6,646</u>
Net Position at End of Year	<u>\$ 3,168</u>

The accompanying notes are an integral part of the financial statements

**TOWN OF ENFIELD, CONNECTICUT  
STATEMENT OF CASH FLOWS  
PROPRIETARY FUNDS  
FOR THE YEAR ENDED JUNE 30, 2015**

(In Thousands)

	<b>Governmental Activities</b>
	<b>Internal Service Funds</b>
Cash Flows from Operating Activities:	
Receipts from charges for services	\$ 20,095
Payments for claims, premiums and fees	(24,005)
Net cash used in operating activities	<u>(3,910)</u>
Cash Flows from Investing Activities:	
Sales of investments	727
Investment income	6
Net cash provided by investing activities	<u>733</u>
Net Decrease in Cash	(3,177)
Cash at Beginning of Year	<u>5,985</u>
Cash at End of Year	<u>\$ 2,808</u>
Reconciliation of Operating Loss to Net Cash Used in Operating Activities:	
Operating loss	\$ (3,484)
Adjustments to reconcile operating loss to net cash used in operating activities:	
Increase in accounts receivable	(28)
Decrease (increase) in prepaid expenses	(15)
Decrease (increase) in due from other funds	102
Increase (decrease) in accounts payable and other payables	(51)
Increase (decrease) in claims payable	(172)
Increase (decrease) in due to other funds	<u>(262)</u>
Net Cash Used in Operating Activities	<u>\$ (3,910)</u>

The accompanying notes are an integral part of the financial statements

**TOWN OF ENFIELD, CONNECTICUT**  
**STATEMENT OF NET POSITION**  
**FIDUCIARY FUNDS**  
**JUNE 30, 2015**

(In Thousands)

	<u>Trust Funds</u>	<u>Agency Funds</u>
Assets:		
Cash and cash equivalents	\$ <u>163</u>	\$ <u>1,511</u>
Investments:		
Stocks	2,483	
Municipal bonds	606	
Corporate bonds	256	
Deferred retirement option program	1,039	
Mutual funds	785	
Guaranteed deposit	21,698	
Insurance company-pooled separate account	85,944	
Real estate funds	<u>7,235</u>	
Total investments	<u>120,046</u>	<u>-</u>
Total assets	120,209	1,511
Liabilities:		
Accounts payable		<u>1,511</u>
Net Position:		
Held in Trust for Other Purposes	<u>\$ 120,209</u>	<u>\$ -</u>

The accompanying notes are an integral part of the financial statements

**TOWN OF ENFIELD, CONNECTICUT  
STATEMENT OF CHANGES IN FIDUCIARY NET POSITION  
FIDUCIARY FUNDS  
FOR THE YEAR ENDED JUNE 30, 2015**

(In Thousands)

	<u>Trust Funds</u>
Additions:	
Contributions:	
Employer contributions	\$ 4,959
Employee contributions	1,323
Total contributions	<u>6,282</u>
Investment earnings:	
Interest and dividends	3,160
Net increase in fair value of investments	2,435
Total investment earnings	<u>5,595</u>
Less investment expenses:	
Investment management fees	379
Net investment earnings	<u>5,216</u>
Total additions	<u>11,498</u>
Deductions:	
Benefits paid	6,193
Administration expenses	238
Total deductions	<u>6,431</u>
Change in Net Position	5,067
Net Position at Beginning of Year	<u>115,142</u>
Net Position at End of Year	<u>\$ 120,209</u>

The accompanying notes are an integral part of the financial statements

**TOWN OF ENFIELD, CONNECTICUT  
NOTES TO FINANCIAL STATEMENTS  
JUNE 30, 2015**

---

(In Thousands)

**1. SUMMARY OF SIGNIFICANT ACCOUNTING POLICIES**

**A. Reporting Entity**

The Town of Enfield, Connecticut (the Town) was settled in 1683. The Town operates under a Council-manager form of government and provides the following services as authorized by its charter (last revised in 2014); public safety (police and fire), highways and streets, sanitation, social services, culture-recreation, education, public improvements, planning and zoning, and general administrative services.

Accounting principles generally accepted in the United States of America require that the reporting entity include 1) the primary government, 2) organizations for which the primary government is financially accountable and 3) other organizations for which the nature and significance of their relationship with the primary government are such that exclusion would cause the reporting entity's financial statement to be misleading or incomplete. The criteria provided in GASB Codification, Section 2100, have been considered and there are no agencies or entities which should be presented with the Town.

**B. Basis of Presentation**

The financial statements of the Town have been prepared in conformity with accounting principles generally accepted in the United States of America (GAAP) as applied to government units. The Governmental Accounting Standards Board (GASB) is the accepted standard-setting body for establishing governmental accounting and financial reporting principles. The more significant of the Town's accounting policies are described below.

**Government-Wide and Fund Financial Statements**

The government-wide financial statements (i.e., the statement of net position and the statement of activities) report information on all of the nonfiduciary activities of the Town's primary government and its component unit. For the most part, the effect of interfund activity has been removed from these statements. Governmental activities, which normally are supported by taxes and intergovernmental revenues, are reported separately from business-type activities, which rely to a significant extent on fees and charges for support.

The statement of activities demonstrates the degree to which the direct expenses of a given function or segment are offset by program revenues. Direct expenses are those that are clearly identifiable with a specific function or segment. Program revenues include 1) charges to customers or applicants who purchase, use or directly benefit from goods, services or privileges provided by a given function or segment and 2) grants and contributions that are restricted to meeting the operational or capital requirements of a particular function or segment. Taxes and other items not properly included among program revenues are reported instead as general revenues.

Separate financial statements are provided for governmental funds, proprietary funds and fiduciary funds, even though the latter are excluded from the government-wide financial statements. Major individual governmental funds and major individual enterprise funds are reported as separate columns in the fund financial statements.

**TOWN OF ENFIELD, CONNECTICUT  
NOTES TO FINANCIAL STATEMENTS  
JUNE 30, 2015**

---

(In Thousands)

**Measurement Focus, Basis of Accounting and Financial Statement Presentation**

The government-wide financial statements are reported using the economic resources measurement focus and the accrual basis of accounting, as are the proprietary fund and fiduciary fund financial statements. Agency funds, however, have no measurement focus.

Revenues are recorded when earned, and expenses are recorded when a liability is incurred, regardless of the timing of related cash flows. Property taxes are recognized as revenues in the year for which they are levied. Grants and similar items are recognized as revenue as soon as all eligibility requirements imposed by the provider have been met.

Governmental fund financial statements are reported using the current financial resources measurement focus and the modified accrual basis of accounting. Revenues are recognized as soon as they are both measurable and available. Revenues are considered to be available when they are collectible within the current period or soon enough thereafter to pay liabilities of the current period. For this purpose, the Town considers revenues to be available if they are collected within 60 days of the end of the current fiscal period.

Property taxes, licenses and interest associated with the current fiscal period are all considered to be susceptible to accrual and have been recognized as revenues of the current fiscal period. In determining when to recognize intergovernmental revenues (grants and entitlements), the legal and contractual requirements of the individual programs are used as guidance. Revenues are recognized when the eligibility requirements have been met. All other revenue items are considered to be measurable and available only when cash is received by the Town.

Expenditures generally are recorded when a liability is incurred, as under accrual accounting. However, debt service expenditures, as well as expenditures related to compensated absences, pension obligations, other post-employment benefits and claims and judgments, are recorded only when payment is due (matured).

The Town reports the following major governmental funds:

The *General Fund* is the government's primary operating fund. It accounts for all financial resources of the general government, except those required to be accounted for in another fund.

The *Water Pollution Control Fund* accounts for the collection of user charges in relation to the cost of water pollution control and the financing of sanitary sewer improvements or services deemed to benefit the properties against which special assessments are levied.

The *Bonded Projects Fund* accounts for the bonded and financial revenues to be used for major capital asset construction and/or purchases.

The *Capital Nonrecurring Fund* accounts for the accumulation of monies for capital projects.

**TOWN OF ENFIELD, CONNECTICUT  
NOTES TO FINANCIAL STATEMENTS  
JUNE 30, 2015**

---

(In Thousands)

Additionally, the Town reports the following fund types:

The *Internal Service Funds* are used to account for the financing of goods or services provided by one department to other departments or agencies on a cost-reimbursement basis. The Health Insurance Fund is used to account for the revenues and related expenditures for the health insurance plan for employees. The Commercial Liability Fund accounts for commercial liability insurance activities of the Town. The Information Technology Fund accounts for the financial operations of the central information systems department.

The *Trust Funds* are used to account for the activities of the Enfield Employees Retirement System and to account for the retiree health benefits of the single-employer defined benefit plan.

The *Agency Funds* are custodial in nature (assets equal liabilities) and do not involve measurement of results of operation. The Town maintains several agency funds for performance bonds, Asnuntuck College, Cultural Arts Commission and other student activities.

As a general rule, the effect of interfund activity has been eliminated from the government-wide financial statements. Exceptions to this general rule are charges between the enterprise funds and various other functions of the government. Elimination of these charges would distort the direct costs and program revenues reported for the various functions concerned.

Amounts reported as program revenues include 1) charges to customers or applicants for goods, services or privileges provided, 2) operating grants and contributions, and 3) capital grants and contributions, including special assessments. Internally dedicated resources are reported as general revenues rather than as program revenues. Likewise, general revenues include all taxes.

Proprietary funds distinguish operating revenues and expenses from nonoperating items. Operating revenues and expenses generally result from providing services and delivering goods in connection with a proprietary fund's principal ongoing operations. The principal operating revenues of the proprietary funds are charges to customers for services. Operating expenses for enterprise funds and internal service funds include the cost of sales and services, administrative expenses and depreciation on capital assets. All revenues and expenses not meeting this definition are reported as nonoperating revenues and expenses.

When both restricted and unrestricted resources are available for use, it is the government's policy to use restricted resources first, then unrestricted resources as they are needed. Unrestricted resources are used in the following order: committed, assigned then unassigned.

**C. Cash Equivalents**

For purposes of reporting cash flows, all savings, checking, money market accounts and certificates of deposit with an original maturity of less than 90 days are considered to be cash equivalents.

**D. Investments**

Investments are stated at fair value.



**TOWN OF ENFIELD, CONNECTICUT  
NOTES TO FINANCIAL STATEMENTS  
JUNE 30, 2015**

---

(In Thousands)

**E. Prepaid Items**

Certain payments to vendors reflect costs applicable to future accounting periods and are recorded as prepaid items in both the government-wide and fund financial statements.

**F. Receivables and Payables**

Activity between funds that are representative of lending/borrowing arrangements outstanding at the end of the fiscal year are referred to as either "due to/from other funds" (i.e., the current portion of interfund loans) or "advances to/from other funds" (i.e., the noncurrent portion of interfund loans). All other outstanding balances between funds are reported as "due to/from other funds." Any residual balances outstanding between the governmental activities and business-type activities are reported in the government-wide financial statements as "internal balances."

Advances between funds, as reported in the fund financial statements, are offset by a fund balance reserve account in applicable governmental funds to indicate that they are not available for appropriation and are not expendable available financial resources.

All trade, property tax, sewer use, sewer assessment and loan receivables are shown net of an allowance for uncollectibles. The allowance for doubtful accounts represents those accounts which are deemed uncollectible based upon collection history and analysis of creditor's ability to pay.

Loan receivables consist of Community Development Block Grant loans. The Town provides low-interest loans for residential rehabilitation as well as loans to local businesses for facility improvements.

**G. Capital Assets**

Capital assets, which include property, buildings, plant, equipment and infrastructure assets (e.g. roads, bridges, sidewalks and similar items), are reported in the governmental activities column in the government-wide financial statements. Capital assets are defined by the government as assets with an initial individual cost of more than \$5,000 for vehicles and equipment, \$20,000 for buildings and improvements and \$100,000 for infrastructure (amounts not rounded) and an estimated useful life in excess of one year. Such assets are recorded at historical cost or estimated historical cost if purchased or constructed. Donated capital assets are recorded at estimated fair market value at the date of donation.

The costs of normal maintenance and repairs that do not add to the value of the asset or materially extend lives are not capitalized.

Major outlays for capital assets and improvements are capitalized as projects are constructed. Interest incurred during the construction phase of capital assets of business-type activities is included as part of the capitalized value of the assets constructed.

**TOWN OF ENFIELD, CONNECTICUT  
NOTES TO FINANCIAL STATEMENTS  
JUNE 30, 2015**

---

(In Thousands)

Property, plant and equipment of the Town are depreciated using the straight-line method over the following estimated useful lives.

<u>Assets</u>	<u>Years</u>
Buildings	50-75
Buildings and improvements	20-75
Machinery and equipment	10-30
Vehicles	10-30
Infrastructure:	
Roads	40
Sidewalks	40
Bridges	70-80
Sewer Lines	100

**H. Deferred Outflows/Inflows of Resources**

In addition to assets, the statement of net position will sometimes report a separate section for deferred outflows of resources. This separate financial statement element, deferred outflows of resources, represents a consumption of net position or fund balance that applies to a future period or periods and so will not be recognized as an outflow of resources (expense/expenditure) until then. The Town reports deferred outflows related to pension in the government-wide statement of net position. A deferred outflow of resources related to pension results from differences between expected and actual experience or other inputs. These amounts are deferred and included in pension expense in a systematic and rational manner over a period equal to the average of the expected remaining service lives of all employees that are provided with benefits through the pension plan (active employees and inactive employees).

In addition to liabilities, the statement of net position will sometimes report a separate section for deferred inflows of resources. This separate financial statement element, deferred inflows of resources, represents an acquisition of net position or fund balance that applies to a future period or periods and so will not be recognized as an inflow of resources (revenue) until that time. The Town reports a deferred charge on refunding and deferred inflows of resources related to pensions in the government-wide statement of net position. A deferred charge on refunding results from the difference in the carrying value of refunded debt and its reacquisition price. This amount is deferred and amortized over the shorter of the life of the refunded or refunding debt. A deferred inflow of resources related to pension results from changes in assumptions. These amounts are deferred and included in pension expense in a systematic and rational manner over a period equal to the average of the expected remaining service lives of all employees that are provided with benefits through the pension plan (active employees and inactive employees). Additionally, the Town reports advance property tax collections in both the government-wide statement of net position and in the governmental funds. The advance property tax collections represent taxes inherently associated with a future period. This amount is recognized during the period in which the revenue is associated. Also, for governmental funds, the Town reports unavailable revenue, which arises only under the modified accrual basis of accounting. The governmental funds report unavailable revenues from several sources: property taxes, sewer user fees, EMS, grants, and long-term loans. These amounts are deferred and recognized as an inflow of resources (revenue) in the period in which the amounts become available.

**TOWN OF ENFIELD, CONNECTICUT  
NOTES TO FINANCIAL STATEMENTS  
JUNE 30, 2015**

---

(In Thousands)

**I. Compensated Absences**

Town employees are granted vacation leave based upon length of employment and sick time depending on which union the employee belongs to. In the event of termination, employees are compensated for accumulated vacation and sick time. The Board of Education has employment contracts, which provide for the accrual of sick pay based on length of service. Vacation and sick leave expenses to be paid in the future periods are accrued when incurred in the government-wide statement. A liability for these amounts is reported in governmental funds only for amounts expected to be paid (matured), for example, as a result of employee resignations and retirements. Compensated absences are generally paid out of the General Fund.

**J. Net Pension Liability**

The net pension liability is measured as the portion of the actuarial present value of projected benefits that is attributed to past periods of employee service (total pension liability), net of the pension plan's fiduciary net position. The pension plan's fiduciary net position is determined using the same valuation methods that are used by the pension plan for purposes of preparing its statement of fiduciary net position. The net pension liability is measured as of a date (measurement date) no earlier than the end of the employer's prior fiscal year, consistently applied from period to period.

**K. OPEB Obligations**

The OPEB obligations represents the cumulative difference between the annual OPEB cost and the Town's contributions to the plans. These amounts are calculated on an actuarial basis and are recorded as noncurrent assets and/or noncurrent liabilities, accordingly, in the government-wide financial statements.

**L. Long-Term Obligations**

In the government-wide financial statements and proprietary fund types in the fund financial statements, long-term debt and other long-term obligations are reported as liabilities in the applicable governmental activities, business-type activities or proprietary fund type statement of net position. Bond premiums and discounts are deferred and amortized over the life of the bonds using the effective interest method. Bonds payable are reported net of the applicable bond premium or discount. Bond issuance costs whether or not withheld from the actual debt proceeds received, are reported as debt service expenditures.

In the fund financial statements, governmental fund types recognize bond premiums and discounts, as well as bond issuance costs, during the current period. The face amount of debt issued is reported as other financing sources. Premiums received on debt issuances are reported as other financing sources while discounts on debt issuances are reported as other financing uses. Issuance costs, whether or not withheld from the actual debt proceeds received, are reported as debt service expenditures.

**TOWN OF ENFIELD, CONNECTICUT  
NOTES TO FINANCIAL STATEMENTS  
JUNE 30, 2015**

---

(In Thousands)

**M. Equity**

Equity in the government-wide financial statements is defined as “net position” and is classified in the following categories:

**Net Investment in Capital Assets**

This component of net position consists of capital assets, net of accumulated depreciation and reduced by the outstanding balances of any bonds, notes or other borrowings that are attributable to the acquisition, construction or improvement of those assets.

**Restricted**

Restrictions are externally imposed by creditors (such as through debt covenants), grantors, contributors or laws or regulations of other governments or imposed by law through constitutional provisions or enabling legislation.

**Unrestricted**

This component of net position consists of amounts that do not meet the definition of “restricted” or “net investment in capital assets.”

The equity of the fund financial statements is defined as “fund balance” and is classified in the following categories:

**Nonspendable Fund Balance**

This represents amounts that cannot be spent due to form (e.g., inventories and prepaid amounts).

**Restricted Fund Balance**

This represents amounts constrained for a specific purpose by external parties, such as grantors, creditors, contributors or laws and regulations of their governments.

**Committed Fund Balance**

This represents amounts constrained for a specific purpose by a government using its highest level of decision-making authority (Town of Enfield Town Council). The Town Council can commit fund balance through the adoption of a resolution prior to the end of the fiscal year. Once adopted, the limitation imposed by the resolution remains in place until similar action is taken to remove or revise the limitation.

**Assigned Fund Balance**

This balance represents amounts constrained for the intent to be used for a specific purpose by the Director of Finance who has been delegated authority to assign amounts through approval of purchase orders by the Town Council.

**Unassigned Fund Balance**

This represents fund balance in the General Fund in excess of nonspendable, restricted, committed and assigned fund balance. If another governmental fund has a fund balance deficit, it is reported as a negative amount in unassigned fund balance.

**TOWN OF ENFIELD, CONNECTICUT  
NOTES TO FINANCIAL STATEMENTS  
JUNE 30, 2015**

---

(In Thousands)

**N. Property Taxes**

Property taxes are assessed as of October 1. Real estate and personal property taxes are due and payable in two installments on July 1 and the following January 1. Motor vehicle taxes are due and payable July 1, and motor vehicle supplemental taxes are due and payable on January 1. Liens are effective on the assessment date and are continued by filing before the end of the fiscal year following the due date.

**O. Accounting Estimates**

The preparation of financial statements in conformity with accounting principles generally accepted in the United States of America requires management to make estimates and assumptions that affect the reported amounts of assets and liabilities and disclosures of contingent assets and liabilities at the date of the financial statements and the reported amounts of revenues and expenses during the reporting period. Actual results could differ from those estimates.

**2. STEWARDSHIP, COMPLIANCE AND ACCOUNTABILITY**

**A. Budgetary Information**

The Town adheres to the following procedures in establishing the budgetary data included in the General Fund and Water Pollution Control Plant Fund financial statements.

By Charter, the Town Manager submits proposed budgets for the General Fund and Water Pollution Control Plan Fund to the Town Council 75 days prior to fiscal year end. The operating budgets include proposed expenditures and the means of financing them.

- Prior to July 1, the budget is legally enacted through passage of a resolution.
- Management is authorized to transfer amounts without approval of the Town Council within departments. Transfers between departments (within functions) can only be made by the Town Council and only within the last six months of the fiscal year.
- The Department of Education is not a separate legal entity, but a separate function of the Town. Its Board is authorized under State law to make any transfers required within their budget at their discretion. Any additional appropriations must have Town Council approval and, if necessary, approval at a public hearing or referendum.
- Formal budgetary integration is employed as a management control device during the year.
- The budget is generally prepared on the modified accrual basis of accounting.
- The legal level of control (the level at which expenditures may not legally exceed appropriations) is at the department level for the General Fund and at the fund level for the Water Pollution Control Plant Fund.
- Budgeted amounts shown are as amended by the Town Council during the course of the year. There were additional appropriations totaling \$1,245 million during the year.
- Generally, all appropriations lapse at year end, except those for the Capital Projects Fund. Appropriations for capital projects are continued until completion of applicable projects, even when project extend more than one fiscal year.

**TOWN OF ENFIELD, CONNECTICUT  
NOTES TO FINANCIAL STATEMENTS  
JUNE 30, 2015**

---

(In Thousands)

- Encumbrances are recognized as a valid and proper charge against a budget appropriation in the year in which the purchase order, contract or other commitment is issued and, accordingly, encumbrances outstanding at year end are reported in budgetary reports as expenditures in the current year.
- Budgets are also legally adopted and presented for the Social Services Fund, Emergency Medical Fund and Water Pollution Control Fund.

**B. Deficit fund equity**

The following governmental funds had fund balance deficits at June 30, 2015:

- The Water Pollution Control Fund had a deficit fund balance of \$3,680 which will be funded from future charges for services and General Fund appropriations.
- The Bonded Projects Fund had a deficit fund balance of \$6,504 which will be funded from the issuance of general obligation bond anticipation notes and bonds.
- The Information Technology Fund had a deficit net position of \$33 which will be funded from future charges for services.

**3. DETAILED NOTES ON ALL FUNDS**

**A. Cash, Cash Equivalents and Investments**

The deposit of public funds is controlled by the Connecticut General Statutes (Section 7-402). Deposits may be made in a "qualified public depository" as defined by the Statutes, or, in amounts not exceeding the Federal Deposit Insurance Corporation insurance limit in an "out of state bank," as defined by the Statutes, which is not a "qualified public depository."

The Connecticut General Statutes (Section 7-400) permit municipalities to invest in: 1) obligations of the United States and its agencies; 2) highly rated obligations of any state of the United States or of any political subdivision, authority or agency thereof; and 3) shares or other interests in custodial arrangements or pools maintaining constant net asset values and in highly rated no-load open end money market and mutual funds (with constant or fluctuating net asset values) whose portfolios are limited to obligations of the United States and its agencies, and repurchase agreements fully collateralized by such obligations. Other provisions of the Statutes cover specific municipal funds with particular investment authority. The provisions of the Statutes regarding the investment of municipal pension funds do not specify permitted investments. Therefore, investment of such funds is generally controlled by the laws applicable to fiduciaries and the provisions of the applicable plan.

The Statutes (Sections 3-24f and 3-27f) also provide for investment in shares of the State Short-Term Investment Fund (STIF) and the State Tax Exempt Proceeds Fund (TEPF). These investment pools are under the control of the State Treasurer, with oversight provided by the Treasurer's Cash Management Advisory Board, and are regulated under the State Statutes and subject to annual audit by the Auditors of Public Accounts. Investment yields are accounted for on an amortized-cost basis with an investment portfolio that is designed to attain a market-average rate of return throughout budgetary and economic cycles. Investors accrue interest daily based on actual earnings, less expenses and transfers to the designated surplus reserve, and the fair value of the position in the pool is the same as the value of the pool shares.

**TOWN OF ENFIELD, CONNECTICUT  
NOTES TO FINANCIAL STATEMENTS  
JUNE 30, 2015**

(In Thousands)

**Deposits**

Based on the criteria described in GASB Statement No. 40, *Deposits and Investment Risk Disclosures*, \$48,111 of the Town's bank balance of \$49,318 was exposed to custodial credit risk as follows:

Uninsured and uncollateralized	\$ 2,358
Uninsured and collateral held by the pledging bank's trust department, not in the Town's name	<u>45,753</u>
Total Amount Subject to Custodial Credit Risk	<u>\$ 48,111</u>

**Cash Equivalents**

Cash equivalents are short-term, highly liquid investments that are both readily convertible to known amounts of cash and purchased within 90 days of maturity. At June 30, 2015, the Town's cash equivalents amounted to \$800. The following table provides summary of the Town's cash equivalents (excluding U.S. government guaranteed obligations) as rated by nationally recognized statistical rating organizations.

	<b><u>Standard &amp; Poor's</u></b>
State of Connecticut Short-Term Investment Fund (STIF)	AAAm

**Investments**

As of June 30, 2015, the Town had the following investments:

<u>Investment Type</u>	<u>Credit Rating</u>	<u>Fair Value</u>	<u>Investment Maturities (Years)</u>		
			<u>Less Than 1</u>	<u>1 - 10</u>	<u>More Than 10</u>
Interest-bearing investments:					
Government bonds	AAA	\$ 1,865	\$ 127	\$ 1,653	\$ 85
Government bonds	AA+/AA-	2,016		2,016	
Corporate bonds	AA+/AA-	30			30
Corporate bonds	A+/A-	115		115	
Corporate bonds	BBB+/BBB-	111		84	27
Certificates of deposit	N/A	<u>7,494</u>	<u>1,587</u>	<u>5,907</u>	
Total		11,631	<u>\$ 1,714</u>	<u>\$ 9,775</u>	<u>\$ 142</u>
Other investments:					
Mutual funds		2,101			
Pooled separate accounts		85,944			
Guaranteed deposit		21,698			
Common stock		2,552			
Real estate		7,235			
Deferred retirement option program		<u>1,039</u>			
Total Investments		\$ <u>132,200</u>			

**TOWN OF ENFIELD, CONNECTICUT  
NOTES TO FINANCIAL STATEMENTS  
JUNE 30, 2015**

(In Thousands)

**Investment Custodial Credit Risk**

Custodial credit risk is the risk that, in the event of the failure of the counterparty, the Town will not be able to recover the value if its investment or collateral securities that are in the possession of an outside party.

**Credit Risk**

The Town has no investment policy that would limit its investment choices due to credit risk other than State statutes governing investments in obligations of any state or political subdivision or in obligations of the State of Connecticut or political subdivision.

**Interest Rate Risk**

The Town does not have a formal investment policy that limits investment maturities as a means of managing its exposure to fair value losses arising from increasing interest rates.

The Pension Trust Fund is also authorized to invest in corporate bonds, domestic common stocks, domestic equity real estate and international equities. The investments of this fund are held in trust by a trustee bank, which executes investment transactions under the direction of the pension plan's investment manager.

**B. Receivables**

Receivables by type at year end for the Town's government-wide financial statements, including the applicable allowances for uncollectible accounts, are as follows:

	<u>Governmental Activities</u>					<u>Total</u>
	<u>General</u>	<u>Water Pollution Control</u>	<u>Bonded Projects</u>	<u>Capital Nonrecurring</u>	<u>Nonmajor and Other Funds</u>	
Receivables:						
Taxes	\$ 5,643	\$	\$	\$	\$	\$ 5,643
Interest	1,867					1,867
Sewer user fees		1,166				1,166
Accounts and other	2,092				66	2,158
Housing loans					1,695	1,695
Intergovernmental	194	72	636	135	278	1,315
Gross receivables	<u>9,796</u>	<u>1,238</u>	<u>636</u>	<u>135</u>	<u>2,039</u>	<u>13,844</u>
Less: Allowance for collection losses	<u>1,827</u>	<u>58</u>				<u>1,885</u>
Net Total Receivables	<u>\$ 7,969</u>	<u>\$ 1,180</u>	<u>\$ 636</u>	<u>\$ 135</u>	<u>\$ 2,039</u>	<u>\$ 11,959</u>



**TOWN OF ENFIELD, CONNECTICUT  
NOTES TO FINANCIAL STATEMENTS  
JUNE 30, 2015**

(In Thousands)

**C. Capital Assets**

Capital asset activity for the year ended June 30, 2015 was as follows:

	<u>Beginning Balance</u>	<u>Increases</u>	<u>Decreases</u>	<u>Transfers</u>	<u>Ending Balance</u>
Governmental activities:					
Capital assets not being depreciated:					
Land	\$ 12,255	\$	\$	\$	\$ 12,255
Construction in progress	7,732	48,921		(11,638)	45,015
Total capital assets not being depreciated	<u>19,987</u>	<u>48,921</u>	<u>-</u>	<u>(11,638)</u>	<u>57,270</u>
Capital assets being depreciated:					
Buildings	34,961				34,961
Building improvements	59,835				59,835
Machinery and equipment	15,024	606	77		15,553
Vehicles	13,837	607	578		13,866
Infrastructure	194,778	325	1,085	11,638	205,656
Total capital assets being depreciated	<u>318,435</u>	<u>1,538</u>	<u>1,740</u>	<u>11,638</u>	<u>329,871</u>
Less accumulated depreciation for:					
Buildings	18,811	561			19,372
Building improvements	10,988	1,482			12,470
Machinery and equipment	6,203	1,246	67		7,382
Vehicles	6,160	824	503		6,481
Infrastructure	70,999	3,180	828		73,351
Total accumulated depreciation	<u>113,161</u>	<u>7,293</u>	<u>1,398</u>	<u>-</u>	<u>119,056</u>
Total capital assets being depreciated, net	<u>205,274</u>	<u>(5,755)</u>	<u>342</u>	<u>11,638</u>	<u>210,815</u>
Governmental Activities Capital Assets, Net	<u>\$ 225,261</u>	<u>\$ 43,166</u>	<u>\$ 342</u>	<u>\$ -</u>	<u>\$ 268,085</u>

Depreciation expense was charged to functions/programs of the government as follows:

Governmental Activities:	
General government	\$ 903
Public safety	649
Public works	3,912
Health and social services	223
Library	45
Education	<u>1,561</u>
Total Depreciation Expense - Governmental Activities	<u>\$ 7,293</u>

**TOWN OF ENFIELD, CONNECTICUT  
NOTES TO FINANCIAL STATEMENTS  
JUNE 30, 2015**

(In Thousands)

**Construction Commitments**

The government has active construction projects as of June 30, 2015. At year end, the government's commitments with contractors are as follows:

<u>Project</u>	<u>Remaining Commitment</u>
Road Improvement Program	\$ 64,480
High School Expansion and Renovation	<u>63,674</u>
	<u>\$ 128,154</u>

The commitments are being financed with bond anticipation notes and state and federal grants.

**D. Interfund Receivables, Payables and Transfers**

The composition of interfund balances as of June 30, 2015 is as follows:

<u>Receivable Fund</u>	<u>Payable Fund</u>	<u>Amount</u>
General Fund	Bonded Projects Fund	\$ 953
General Fund	Water Pollution Control	1,578
General Fund	Nonmajor Governmental Funds	472
General Fund	Internal Service Funds	55
Internal Service Funds	General Fund	1,183
Capital Nonrecurring Fund	General Fund	291
Nonmajor Governmental Funds	General Fund	<u>8</u>
		<u>\$ 4,540</u>

All balances are expected to be repaid within a year.

The General Fund advanced the Water Pollution Control Fund \$2,492. The advances amongst funds relate to working capital loans. None of the balance is scheduled to be collected in the subsequent year.

**TOWN OF ENFIELD, CONNECTICUT  
NOTES TO FINANCIAL STATEMENTS  
JUNE 30, 2015**

(In Thousands)

Interfund transfers are generally used to supplement revenues of other funds. The transfers that occurred during the year are as follows:

	<b>Transfers In</b>				<b>Total Transfers Out</b>
	<b>General Fund</b>	<b>Bonded Projects</b>	<b>Capital Nonrecurring</b>	<b>Nonmajor Governmental Funds</b>	
Transfers out:					
General Fund	\$	\$	\$	\$	\$
Water Pollution	377	94	2,265	53	2,412
Capital Nonrecurring		500			377
Nonmajor	180				500
	<u>180</u>	<u>500</u>	<u>2,265</u>	<u>53</u>	<u>180</u>
Total Transfers In	<u>\$ 557</u>	<u>\$ 594</u>	<u>\$ 2,265</u>	<u>\$ 53</u>	<u>\$ 3,469</u>

**E. Long-Term Debt**

**Changes in Long-Term Liabilities**

Long-term liability activity for the year ended June 30, 2015 was as follows:

	<b>Beginning Balance</b>	<b>Increases</b>	<b>Decreases</b>	<b>Ending Balance</b>	<b>Due Within One Year</b>
Governmental Activities:					
Bonds payable:					
General obligation bonds	\$ 19,450	\$ 25,000	\$ 2,860	\$ 41,590	\$ 2,865
Bond premiums		1,449	67	1,382	
Total bonds payable	<u>19,450</u>	<u>26,449</u>	<u>2,927</u>	<u>42,972</u>	<u>2,865</u>
Compensated absences	6,984	2,710	2,531	7,163	1,202
Landfill closure cost	210		15	195	15
Claims payable	707	27	43	691	45
Capital lease	4,633		1,711	2,922	1,555
Net pension liability	7,351	854		8,205	
Net OPEB obligation	<u>1,344</u>	<u>866</u>		<u>2,210</u>	
Total Governmental Activities Long-Term Liabilities	<u>\$ 40,679</u>	<u>\$ 30,906</u>	<u>\$ 7,227</u>	<u>\$ 64,358</u>	<u>\$ 5,682</u>

For the governmental activities, compensated absences and net OPEB obligations are generally liquidated by the General Fund.

**TOWN OF ENFIELD, CONNECTICUT  
NOTES TO FINANCIAL STATEMENTS  
JUNE 30, 2015**

(In Thousands)

**General Obligation Bonds**

The Town issues general obligation bonds to provide funds for the acquisition and construction of major capital facilities.

General obligation bonds are direct obligations of the Town for which full faith and credit are pledged and are payable from taxes levied on all taxable properties located within the Town.

General obligation bonds currently outstanding are as follows:

<u>Description</u>	<u>Date of Issue</u>	<u>Maturity</u>	<u>Interest Rate (%)</u>	<u>Amount of Original Issue</u>	<u>Annual Principal</u>	<u>Balance Outstanding June 30, 2015</u>
General purpose:						
Road reconstruction	6/15/08	6/15/28	3.25-5.0	\$ 19,000	Various	\$ 11,100
Refunding	8/12/09	7/1/18	2.0-4.0	4,392	Various	2,334
Road reconstruction	8/5/14	8/1/34	2.25-4.0	25,000	Various	25,000
Total general purpose				<u>48,392</u>		<u>38,434</u>
School:						
Refunding	8/12/09	7/1/18	2.0-4.0	<u>6,003</u>	Various	<u>3,156</u>
Total Outstanding				<u>\$ 54,395</u>		<u>\$ 41,590</u>

Annual debt service requirements to maturity for general obligation bonds are as follows:

	<u>Principal</u>	<u>Interest</u>
2016	\$ 2,865	\$ 1,997
2017	3,165	1,442
2018	3,190	1,284
2019	2,330	1,167
2020	2,315	1,085
2021-2025	11,575	4,044
2026-2030	9,575	2,014
2031-2035	<u>6,575</u>	<u>615</u>
	<u>\$ 41,590</u>	<u>\$ 13,648</u>

**Authorized but Unissued Bonds**

The total of authorized but unissued bonds at June 30, 2015 is \$72,500. In most cases, interim financing is obtained through bond anticipation notes or other short-term borrowings until the issuance of long-term debt.

**TOWN OF ENFIELD, CONNECTICUT  
NOTES TO FINANCIAL STATEMENTS  
JUNE 30, 2015**

(In Thousands)

**Legal Debt Limit**

The Town is subject to the General Statutes of Connecticut, which limits the amount of debt outstanding at June 30, 2015 to the following:

<u>Category</u>	<u>Debt Limitation</u>	<u>Net Indebtedness</u>	<u>Balance</u>
General purpose	\$ 213,948	\$ 101,869	\$ 112,079
Schools	427,896	38,156	389,740
Sewers	356,580		356,580
Urban renewal	309,036		309,036
Pension deficit	285,264		285,264

Total debt outstanding may not exceed seven times annual receipts from taxation (\$665,616).

**Landfill Closure and Post-Closure Care Costs**

State and Federal laws and regulations require that the Town perform certain maintenance and monitoring functions at the landfill site for 19 years after closure. The liability for the landfill post-closure care, aggregating \$195, is based on the amount estimated to be paid for all equipment, facilities and services required to monitor and maintain the landfills as of June 30, 2015. However, the actual cost of closure and post-closure care may be higher due to inflation, changes in technology or changes in landfill laws and regulations.

**Capital Leases**

The town leases various computer and telephone equipment, ambulance, radio frequency towers and trucks. These lease agreements qualify as capital leases for accounting purposes (titles transfer at the end of lease terms) and, therefore, are recorded at the present value of the future minimum lease payments as of the date of their inception.

	<u>Governmental Activities</u>
Asset:	
Vehicles and equipment	\$ 10,395
Less: accumulated depreciation	<u>3,200</u>
Total	<u><u>\$ 7,195</u></u>

**TOWN OF ENFIELD, CONNECTICUT  
NOTES TO FINANCIAL STATEMENTS  
JUNE 30, 2015**

(In Thousands)

The following is a schedule of future minimum lease payments under this capital lease and the present value of the net minimum lease payments at June 30, 2015:

<u>Fiscal Year Ending June 30,</u>	<u>Governmental Activities</u>
2016	\$ 1,626
2017	856
2018	228
2019	133
2020	70
Thereafter	153
Total lease payments	<u>3,066</u>
Less amount representing interest	<u>144</u>
Present Value of Future Minimum Lease Payments	<u><u>\$ 2,922</u></u>

**F. Short-Term Debt**

The following is a summary of bond anticipation note activity for the year ended June 30, 2015:

<u>Project</u>	<u>Issue Date</u>	<u>Due Date</u>	<u>Original Issue Amount</u>	<u>Interest Rate (%)</u>	<u>Balance July 1, 2014</u>	<u>Issued</u>	<u>Retired</u>	<u>Balance Outstanding June 30, 2015</u>
Road Improvement Program	8/13/2013	8/12/2014	\$ 11,500	1.00%	\$ 11,500	\$	\$ 11,500	\$ -
High School Expansion and Renovation Project	8/13/2013	8/12/2014	11,500	1.00%	5,000		5,000	-
High School Expansion and Renovation Project	8/12/2014	8/11/2015	10,000	1.00%		10,000		10,000
High School Expansion and Renovation Project	5/19/2015	8/11/2015	<u>10,000</u>	1.00%	<u>          </u>	<u>10,000</u>	<u>          </u>	<u>10,000</u>
			<u>\$ 43,000</u>		<u>\$ 16,500</u>	<u>\$ 20,000</u>	<u>\$ 16,500</u>	<u>\$ 20,000</u>

**TOWN OF ENFIELD, CONNECTICUT  
NOTES TO FINANCIAL STATEMENTS  
JUNE 30, 2015**

(In Thousands)

**G. Fund Balance**

The components of fund balance for the governmental funds at June 30, 2015 are as follows:

	<u>General Fund</u>	<u>Water Pollution Control</u>	<u>Bonded Projects</u>	<u>Capital Nonrecurring</u>	<u>Nonmajor Governmental Funds</u>	<u>Total</u>
Fund balances:						
Nonspendable:						
Inventory	\$	\$	\$	\$	\$ 87	\$ 87
Advances	2,492					2,492
Prepaid expenses	2,101					2,101
Permanent fund principal					37	37
Restricted for:						
Grants					801	801
Committed:						
General government grants	127					127
School miscellaneous	1,096					1,096
Revaluation	168					168
Emergency fuel bank	5					5
Elderly relief	98					98
Recreation	425					425
Police outside services	211					211
Dog fund					23	23
Open space acquisition					609	609
Community development					286	286
Public library					279	279
Town memorial					97	97
Scholarship					284	284
Macioek post ambulance					231	231
Library trust					26	26
Capital improvements				3,595		3,595
Assigned:						
Subsequent year's budget	2,000					2,000
Planning and development - encumbrances	22					22
Library - encumbrances	10					10
Education	139					139
Unassigned	<u>16,908</u>	<u>(3,680)</u>	<u>(6,504)</u>			<u>6,724</u>
Total Fund Balances	<u>\$ 25,802</u>	<u>\$ (3,680)</u>	<u>\$ (6,504)</u>	<u>\$ 3,595</u>	<u>\$ 2,760</u>	<u>\$ 21,973</u>

Encumbrances of \$32 at June 30, 2015 are contained in the above table in the assigned category of the General Fund.

**4. EMPLOYEE RETIREMENT PLAN**

**A. Pension Trust Fund**

The Town of Enfield administers two single-employer, contributory defined benefit pension plans. The two plans, Town and Police, are included in the financial statements as pension trust funds. The plans do not issue stand-alone financial statements.

Per the charter, the Town Manager is responsible for management of the pension plans, and the Town Treasurer is the treasurer of the plans. The Town Manager has appointed a committee comprised of the Town Manager, Finance Director, Human Resources Director and Treasurer to manage the pension plans.

**TOWN OF ENFIELD, CONNECTICUT  
NOTES TO FINANCIAL STATEMENTS  
JUNE 30, 2015**

(In Thousands)

**Plan Description and Benefits Provided**

*Employee's Pension Plan*

The Town of Enfield Pension Plan covers all employees working more than nineteen hours a week and for more than five months per calendar year except teachers covered and the State of Connecticut Teachers' Retirement System and Police.

*Police Pension Plan*

The Town of Enfield Police Pension Plan covers employees in the Police Department working more than thirty-five hours a week and for more than five months per calendar year.

**Benefit Provisions**

*Employee's Pension Plan*

The Town provides all retirement benefits through a single-employer, contributory defined benefit plan. All employees are 100% vested after five years of continuous service. Employees who retire at normal retirement at age 65 receive a retirement benefit.

*Police Pension Plan*

The Town provides all retirement benefits through a single-employer, contributory defined benefit plan. All employees are 100% vested after ten years of continuous service. Employees who retire at normal retirement at age of the latter of age 50 or 20 years of service receive a retirement benefit.

At July 1, 2014, Plan membership consisted of the following (amounts not rounded):

	<u>Employee's Pension Plan</u>	<u>Police Pension Plan</u>
Retirees and beneficiaries currently receiving benefits	252	58
Terminated plan members entitled to benefits but not yet receiving them and inactive with vested benefits	176	22
Active plan members	<u>512</u>	<u>90</u>
	<u>940</u>	<u>170</u>

**Summary of Significant Accounting Policies**

**Basis of Accounting**

Financial statements are prepared using the accrual basis of accounting for the two defined benefit pension plans. Plan member contributions are recognized in the period in which the contributions are due. Employer contributions are recognized when due and a formal commitment to provide the contributions has been made. Benefits and refunds are recognized when due and payable in accordance with the terms of the plans.



**TOWN OF ENFIELD, CONNECTICUT  
NOTES TO FINANCIAL STATEMENTS  
JUNE 30, 2015**

(In Thousands)

**Method Used to Value Investments**

Investments are reported at fair value. Securities traded on a national exchange are valued at the last reported sales price. Investment income is recognized as earned.

**Funding Policy**

Town employees contribute 3.5% of earnings and Police employees contribute 7% of earnings. The Town is required to contribute the amounts necessary to finance the benefits for its employees. Administrative costs of the Plan are financed through investment earnings.

**Investments**

**Investment Policy**

The Employee's and Police Pension Plans' policy in regard to the allocation of invested assets is established and may be amended by the PERS Board by a majority vote of its members. It is the policy of the PERS Board to pursue an investment strategy that reduces risk through the prudent diversification of the portfolio across a broad selection of distinct asset classes. The Employee's and Police Pension Plans' investment policy discourages the use of cash equivalents, except for liquidity purposes, and aims to refrain from dramatically shifting asset class allocations over short time spans. The following was the Board's adopted asset allocation policy as of June 30, 2015:

	<u>Target</u>
Large Cap Equity	30%
Small Cap Equity	7%
International Equity	13%
Fixed Income	10%
Long Duration Bond	8%
Real Estate	5%
Stable Value	<u>27%</u>
	<u>100%</u>

**Concentrations**

The pension plans held the following investments representing 5% or more of the pension trust fund's fiduciary net position as of June 30, 2015:

Private Placement Fund	\$ 6,021
Guaranteed Deposit Account	21,698

**Rate of Return**

For the year ended June 30, 2015, the annual money-weighted rate of return on pension plan investments for the Employee's and Police Pension Plans, net of pension plan investment expense, were 4.5% and 4.6%, respectively. The money-weighted rate of return expresses investment performance, net of investment expense, adjusted for the changing amounts actually invested.

**TOWN OF ENFIELD, CONNECTICUT  
NOTES TO FINANCIAL STATEMENTS  
JUNE 30, 2015**

(In Thousands)

**Deferred Retirement Option Program (DROP)**

The Police Pension Plan offers a Deferred Retirement Option Program (DROP) to its bargaining unit employees employed on or after July 1, 2011. The DROP is intended to provide an alternative retirement option to police employees who are eligible to retire. An employee is considered eligible if they are a full-time employee and must have completed less than 35.25 years of service. During the DROP period, pension payments will be made depending on the DROP factor based on the age of the employee. Amounts held by the Police Pension Plan DROP investments at June 30, 2015 were \$1,039.

**Net Pension Liability of the Town**

The net pension liability of the Employee's and Police Pension Plans at June 30, 2015 were as follows:

	<u>Employee's Pension Plan</u>	<u>Police Pension Plan</u>
Total pension liability	\$ 66,143	\$ 57,978
Plan fiduciary net position	<u>61,973</u>	<u>53,943</u>
Net Pension Liability	<u>\$ 4,170</u>	<u>\$ 4,035</u>
Plan fiduciary net position as a percentage of the total pension liability	93.70%	93.04%

**Actuarial Assumptions**

The total pension liability for the Employee's and Police Pension Plans were determined by an actuarial valuation as of July 1, 2014, using the following actuarial assumptions, applied to all periods included in the measurement:

Inflation	3.50% for Employees' Plan, 4% for Police
Salary increases	4.25%, average, including inflation
Investment rate of return	7.25%, net of investment and contract fees, including inflation

Mortality rates were based on the RP-2000 Healthy Annuitant Mortality Table for Males or Females, as appropriate, with adjustments for mortality improvements based on Scale AA.

**TOWN OF ENFIELD, CONNECTICUT  
NOTES TO FINANCIAL STATEMENTS  
JUNE 30, 2015**

(In Thousands)

The long-term expected rate of return on pension plan investments was determined using a building-block method in which best-estimate ranges of expected future real rates of return (expected returns, net of pension plan investment expense and inflation) are developed for each major asset class. These ranges are combined to produce the long-term expected rate of return by weighting the expected future real rates of return by the target asset allocation percentage and by adding expected inflation. Best estimates of arithmetic real rates of return for each major asset class included in the pension plan's target asset allocation as of June 30, 2015 (see the discussion of the pension plan's investment policy) are summarized in the following table:

	<u>Target</u>
Large Cap Equity	30%
Small Cap Equity	7%
International Equity	13%
Fixed Income	10%
Long Duration Bond	8%
Real Estate	5%
Stable Value	<u>27%</u>
	<u><u>100%</u></u>

**Discount Rate**

The discount rate used to measure the total pension liability was 7.00% for both the Employee's Pension Plan and the Police Pension Plan. The projection of cash flows used to determine the discount rate assumed that plan member contributions will be made at the current contribution rate and that Town contributions will be made at rates equal to the difference between actuarially determined contribution rates and the member rate. Based on those assumptions, the pension plan's fiduciary net position was projected to be available to make all projected future benefit payments of current plan members. Therefore, the long-term expected rate of return on pension plan investments was applied to all periods of projected benefit payments to determine the total pension liability. The discount rate for the Employee's Pension Plan and the Police Pension Plan was adjusted from 7.25% from June 30, 2014.

**Sensitivity of the Net Pension Liability to Changes in the Discount Rate**

The following presents the net pension liability of the Employee's and Police Pension Plans, calculated using the discount rate of 7.00%, as well as what the net pension (asset) liabilities would be if it were calculated using a discount rate that is 1 percentage point lower (6.00%) or 1 percentage point higher (8.00%) than the current rate:

	<u>1% Decrease (6.00%)</u>	<u>Current Discount Rate (7.00%)</u>	<u>1% Increase (8.00%)</u>
Employee's Net Pension (Asset) Liability \$	11,976	\$ 4,170	\$ (2,479)
Police Plan Net Pension (Asset) Liability	11,340	4,035	(2,034)

**TOWN OF ENFIELD, CONNECTICUT  
NOTES TO FINANCIAL STATEMENTS  
JUNE 30, 2015**

(In Thousands)

**Changes in the Net Pension Liability**

	<b>Employees' Pension Plan</b>		
	<b>Increase (Decrease)</b>		
	<b>Total Pension Liability (a)</b>	<b>Plan Fiduciary Net Position (b)</b>	<b>Net Pension Liability (a)-(b)</b>
Balances as of June 30, 2014	\$ 63,076	\$ 59,330	\$ 3,746
Changes for the year:			
Service cost	2,064		2,064
Interest on total pension liability	4,457		4,457
Differences between expected and actual experience including assumption changes	(627)		(627)
Employer contributions		2,128	(2,128)
Member contributions		778	(778)
Net investment income		2,660	(2,660)
Benefit payments, including refund to employee contributions	(2,827)	(2,827)	-
Administrative expenses		(96)	96
Net changes	<u>3,067</u>	<u>2,643</u>	<u>424</u>
Balances as of June 30, 2015	<u>\$ 66,143</u>	<u>\$ 61,973</u>	<u>\$ 4,170</u>

Amounts reported as changes of assumptions resulted primarily from adjusting the investment return assumption from 7.25% to 7.00% and from changing the salary scale from 4.25% to 4.25% for the first five years and 4% thereafter.

	<b>Police Pension Plan</b>		
	<b>Increase (Decrease)</b>		
	<b>Total Pension Liability (a)</b>	<b>Plan Fiduciary Net Position (b)</b>	<b>Net Pension Liability (a)-(b)</b>
Balances as of June 30, 2014	\$ 55,406	\$ 51,801	\$ 3,605
Changes for the year:			
Service cost	962		962
Interest on total pension liability	3,910		3,910
Differences between expected and actual experience	(187)		(187)
Employer contributions		1,428	(1,428)
Member contributions		545	(545)
Net investment income		2,368	(2,368)
Benefit payments, including refund to employee contributions	(2,113)	(2,113)	-
Administrative expenses		(86)	86
Net changes	<u>2,572</u>	<u>2,142</u>	<u>430</u>
Balances as of June 30, 2015	<u>\$ 57,978</u>	<u>\$ 53,943</u>	<u>\$ 4,035</u>

**TOWN OF ENFIELD, CONNECTICUT  
NOTES TO FINANCIAL STATEMENTS  
JUNE 30, 2015**

(In Thousands)

**Pension Expense and Deferred Outflows of Resources and Deferred Inflows of Resources Related to Pensions**

For the year ended June 30, 2015, the Town recognized pension expense of \$845 and \$191 for the Employees' Pension Plan and Police Pension Plan, respectively. At June 30, 2015, the Town reported deferred outflows of resources and deferred inflows of resources related to pension from the following sources:

	<u>Employees' Pension Plan</u>	
	<u>Deferred Outflows of Resources</u>	<u>Deferred Inflows of Resources</u>
Differences between expected and actual experience	\$ 644	\$
Changes of assumptions		16
Net difference between projected and actual earning on pension plan investments	<u>3,272</u>	<u>1,491</u>
Total	<u>\$ 3,916</u>	<u>\$ 1,507</u>

	<u>Police Pension Plan</u>	
	<u>Deferred Outflows of Resources</u>	<u>Deferred Inflows of Resources</u>
Differences between expected and actual experience	\$ 594	\$
Changes of assumptions		407
Net difference between projected and actual earning on pension plan investments	<u>2,785</u>	<u>1,250</u>
Total	<u>\$ 3,379</u>	<u>\$ 1,657</u>

**TOWN OF ENFIELD, CONNECTICUT  
NOTES TO FINANCIAL STATEMENTS  
JUNE 30, 2015**

(In Thousands)

Amounts reported as deferred outflows of resources and deferred inflows of resources related to pension will be recognized in pension expense as follows:

<u>Year Ending June 30,</u>	<u>Employees' Pension Plan</u>	<u>Police Pension Plan</u>
2016	\$ 643	482
2017	643	482
2018	643	482
2019	643	483
2020	(176)	(214)
Thereafter	13	7

**B. Teachers Retirement**

**Plan Description**

Teachers, principals, superintendents or supervisors engaged in service of public schools are provided with pensions through the Connecticut State Teachers' Retirement System, a cost sharing multiple-employer defined benefit pension plan administered by the Teachers Retirement Board. Chapter 167a of the State Statutes grants authority to establish and amend the benefit terms to the Teachers Retirement Board. The Teachers Retirement Board issues a publicly available financial report that can be obtained at [www.ct.gov](http://www.ct.gov).

**Benefit Provisions**

The plan provides retirement, disability and death benefits. Employees are eligible to retire at age 60 with 20 years of credited service in Connecticut, or 35 years of credited service including at least 25 years of service in Connecticut.

**Normal Retirement**

Retirement benefits for employees are calculated as 2% of the average annual salary times the years of credited service (maximum benefit is 75% of average annual salary during the 3 years of highest salary).

**Early Retirement**

Employees are eligible after 25 years of credited service including 20 years of Connecticut service, or age 55 with 20 years of credited service including 15 years of Connecticut service with reduced benefit amounts.

**Disability Retirement**

Employees are eligible for service-related disability benefits regardless of length of service. Five years of credited service is required for nonservice-related disability eligibility. Disability benefits are calculated as 2% of average annual salary times credited service to date of disability, but not less than 15% of average annual salary, nor more than 50% of average annual salary.

**TOWN OF ENFIELD, CONNECTICUT  
NOTES TO FINANCIAL STATEMENTS  
JUNE 30, 2015**

---

(In Thousands)

**Contributions**

Per Connecticut General Statutes Section 10-183z (which reflects Public Act 79-436 as amended), contribution requirements of active employees and the State of Connecticut are approved, amended and certified by the State Teachers Retirement Board and appropriated by the General Assembly.

*Employer (School Districts)*

School District employers are not required to make contributions to the plan.

The statutes require the State of Connecticut to contribute 100% of each school districts' required contributions, which are actuarially determined as an amount that, when combined with employee contributions, is expected to finance the costs of the benefits earned by employees during the year, with any additional amount to finance any unfunded accrued liability.

*Employees*

Effective July 1, 1992, each teacher is required to contribute 6% of salary for the pension benefit.

**Pension Liabilities, Pension Expense, and Deferred Outflows of Resources and Deferred Inflows of Resources Related to Pensions**

At June 30, 2015, the Town reports no amounts for its proportionate share of the net pension liability, and related deferred outflows and inflows, due to the statutory requirement that the State pay 100% of the required contribution. The amount recognized by the Town as its proportionate share of the net pension liability, the related state support, and the total portion of the net pension liability that was associated with the Town were as follows:

Town's proportionate share of the net pension liability	\$	-
State's proportionate share of the net pension liability associated with the Town		<u>100,299</u>
Total	\$	<u><u>100,299</u></u>

The net pension liability was measured as of June 30, 2014, and the total pension liability used to calculate the net pension liability was determined by an actuarial valuation as of that date. At June 30, 2015, the Town has no proportionate share of the net pension liability.

For the year ended June 30, 2015, the Town recognized pension expense and revenue of \$7,525 in Exhibit II for on-behalf amounts for the benefits provided by the State.

**TOWN OF ENFIELD, CONNECTICUT  
NOTES TO FINANCIAL STATEMENTS  
JUNE 30, 2015**

(In Thousands)

**Actuarial Assumptions**

The total pension liability was determined by an actuarial valuation as of June 30, 2014, using the following actuarial assumptions, applied to all periods included in the measurement:

Inflation	3.00%
Salary increase	3.75-7.00%, including inflation
Investment rate of return	8.50%, net of pension plan investment expense, including inflation

Mortality rates were based on the RP-2000 Combined Mortality Table projected 19 years using scale AA, with a two-year setback for males and females for the period after service retirement and for dependent beneficiaries.

The actuarial assumptions used in the June 30, 2014 valuation were based on the results of an actuarial experience study for the period July 1, 2005 - June 30, 2010.

Future cost-of-living increases for members who retire on or after September 1, 1992 are assumed to be an annual cost-of-living adjustment of 2%.

The long-term expected rate of return on pension plan investments was determined using a log-normal distribution analysis in which best-estimate ranges of expected future real rates of return (expected returns, net of pension plan investment expense and inflation) are developed for each major asset class. These ranges are combined to produce the long-term expected rate of return by weighting the expected future real rates of return by the target asset allocation percentage and by adding expected inflation. The target asset allocation and best estimates of arithmetic real rates of return for each major class are summarized in the following table:

<u>Asset Class</u>	<u>Target Allocation</u>	<u>Long-Term Expected Real Rate of Return</u>
Large Cap U.S. equities	21.0%	7.3%
Developed non-U.S. equities	18.0%	7.5%
Emerging markets (non-U.S.)	9.0%	8.6%
Core fixed income	7.0%	1.7%
Inflation linked bond fund	3.0%	1.3%
Emerging market bond	5.0%	4.8%
High yield bonds	5.0%	3.7%
Real estate	7.0%	5.9%
Private equity	11.0%	10.9%
Alternative investments	8.0%	0.7%
Liquidity fund	6.0%	0.0%
Total	<u>100.0%</u>	



**TOWN OF ENFIELD, CONNECTICUT  
NOTES TO FINANCIAL STATEMENTS  
JUNE 30, 2015**

---

(In Thousands)

**Discount Rate**

The discount rate used to measure the total pension liability was 8.50%. The projection of cash flows used to determine the discount rate assumed that plan member contributions will be made at the current contribution rate and that State contributions will be made at the actuarially determined contribution rates in the future years. Based on those assumptions, the pension plan's fiduciary net position was projected to be available to make all projected future benefit payments of current plan members. Therefore, the long-term expected rate of return on pension plan investments was applied to all periods of projected benefit payments to determine the total pension liability.

**Sensitivity of the Net Pension Liability to Changes in the Discount Rate**

The Town's proportionate share of the net pension liability is \$-0- and, therefore, the change in the discount rate would only impact the amount recorded by the State of Connecticut.

**Other Information**

Additional information is included in the required supplementary information section of the financial statements. A schedule of contributions is not presented as the Town has no obligation to contribute to the plan.

**5. OTHER POSTEMPLOYMENT BENEFITS**

**Plan Description**

The Town provides post-retirement benefits for certain employees for current and future health and life insurance benefit expenses through a single-employer defined benefit plan.

The plan covers Town, Police and Board of Education employees. Benefit provisions are established through negotiations between the Town and the various unions representing the employees. The Town does not issue a stand-alone financial report for the plan.

The plan is considered to be part of the Town's financial reporting entity and is included in the Town's financial report as the Other Post-Employment Benefits Trust Fund. The plan does not issue a stand-alone financial report.

At July 1, 2013, plan membership consisted of the following (amounts not rounded):

Retired members and spouses of retired members	291
Active plan members	<u>1,000</u>
Total	<u><u>1,291</u></u>

**Funding Policy**

The contribution requirements of plan members and the Town are also negotiated with the various unions representing the employees. Retired plan members and beneficiaries currently receiving benefits are required to contribute as established by the Town and may be amended by the Town.

**TOWN OF ENFIELD, CONNECTICUT  
NOTES TO FINANCIAL STATEMENTS  
JUNE 30, 2015**

(In Thousands)

**Annual OPEB Cost and Net OPEB Obligations**

The Town of Enfield’s annual other postemployment benefit (OPEB) cost is calculated based on the annual required contribution (ARC), an amount actuarially determined in accordance with the parameters of GASB Statement 45. The ARC represents a level of funding that, if paid on an ongoing basis, is projected to cover normal cost each year and amortize any unfunded actuarial liabilities (or funding excess) over a period not to exceed 30 years. The following table shows the components of the Town’s annual OPEB cost for the year, the amount actually contributed to the plan, and changes in the Town’s net OPEB obligation:

Annual required contribution (ARC)	\$	2,261
Interest on net OPEB obligation		101
Adjustment to annual required contribution		<u>(93)</u>
Annual OPEB Cost		2,269
Contributions made		<u>1,403</u>
Increase in net OPEB obligation		866
Net OPEB obligation at beginning of year		<u>1,344</u>
Net OPEB Obligation at End of Year	\$	<u><u>2,210</u></u>

The Town’s annual OPEB cost, the percentage of annual OPEB cost contributed to the plan, and the net OPEB obligation for the three fiscal years ended June 30, 2015 is presented below.

<u>Fiscal Year Ending</u>	<u>Annual OPEB Cost (AOC)</u>	<u>Actual Contribution</u>	<u>Percentage of AOC Contributed</u>	<u>Net OPEB (Asset) Obligation</u>
6/30/2013	\$ 1,900	\$ 1,279	67.3%	\$ 573
6/30/2014	2,037	1,266	62.2%	1,344
6/30/2015	2,269	1,403	61.8%	2,210

Actuarial valuations of an ongoing plan involve estimates of the value of reported amounts and assumptions about the probability of occurrence of events far into the future. Examples include assumptions about future employment, mortality and the healthcare cost trend. Amounts determined regarding the funded status of the plan and the annual required contributions of the employer are subject to continual revision as accrual results are compared with past expectations and new estimates are made about the future.

**TOWN OF ENFIELD, CONNECTICUT  
NOTES TO FINANCIAL STATEMENTS  
JUNE 30, 2015**

(In Thousands)

<b>Schedule of Funding Progress</b>						
<b>Actuarial Valuation Date</b>	<b>Actuarial Value of Assets (a)</b>	<b>Actuarial Accrued Liability (AAL) Entry Age (b)</b>	<b>(Unfunded) AAL (UAAL) (b-a)</b>	<b>Funded Ratio (a/b)</b>	<b>Covered Payroll (c)</b>	<b>UAAL as a % of Covered Payroll ((b-a)/c)</b>
7/1/2009	\$	\$ 23,965	\$ (23,965)	0%	\$ N/A	N/A
7/1/2011	3,076	21,500	(18,424)	14%	N/A	N/A
7/1/2013	3,530	24,916	(21,386)	14%	58,329	36.7%

<b>Schedule of Employer Contributions</b>			
<b>Year Ended</b>	<b>Annual Required Contribution</b>	<b>Actual Contribution</b>	<b>Percentage Contributed</b>
6/30/2013	\$ 1,901	\$ 1,279	67%
6/30/2014	2,029	1,266	62%
6/30/2015	2,261	1,403	62%

Projections for benefits for financial reporting purposes are based on the substantive plan (the plan as understood by the employer and plan members) and include the types of benefits provided at the time of each valuation and the historical pattern of sharing benefit costs between the employer and plan members to that point. The actuarial methods and assumptions used include techniques that are designed to reduce the effects of short-term volatility in actuarial accrued liabilities and the actuarial value of assets, consistent with the long-term perspective of the calculations.

In the July 1, 2013 actuarial valuation, the actuarial assumptions are as follows:

Interest rate	7.50%
2013 medical trend rates	8.00%
Ultimate medical/Rx trend rate	5.00%
Amortization method	Level Percent Closed
Actuarial cost method	Projected Unit Credit
Remaining amortization period	26.79
Annual payroll increase	4.00%

**TOWN OF ENFIELD, CONNECTICUT  
NOTES TO FINANCIAL STATEMENTS  
JUNE 30, 2015**

(In Thousands)

**6. COMBINING SCHEDULE OF PENSION AND OTHER EMPLOYEE BENEFIT TRUST FUNDS**

**Combining Schedule of Plan Net Position:**

	<u>Employee's Pension Plan</u>	<u>Police Pension Plan</u>	<u>OPEB Trust Fund</u>	<u>Total</u>
Assets:				
Cash	\$	\$	\$ 163	\$ 163
Investments:				
Stocks			2,483	2,483
Municipal bonds			606	606
Corporate bonds			256	256
Mutual funds			785	785
Pooled separate accounts	47,129	38,815		85,944
Deferred retirement option program		1,039		1,039
Guaranteed deposit	11,022	10,676		21,698
Real estate funds	3,822	3,413		7,235
Total investments	<u>61,973</u>	<u>53,943</u>	<u>4,293</u>	<u>120,209</u>
Net Position:				
Held in Trust for Other Purposes	<u>\$ 61,973</u>	<u>\$ 53,943</u>	<u>\$ 4,293</u>	<u>\$ 120,209</u>

**TOWN OF ENFIELD, CONNECTICUT  
NOTES TO FINANCIAL STATEMENTS  
JUNE 30, 2015**

(In Thousands)

**Combining Schedule of Changes in Plan Net Position:**

	<u>Employee's Pension Plan</u>	<u>Police Pension Plan</u>	<u>OPEB Trust Fund</u>	<u>Total</u>
Additions:				
Contributions:				
Employer contributions	\$ 2,128	\$ 1,428	\$ 1,403	\$ 4,959
Employee contributions	<u>778</u>	<u>545</u>	<u>          </u>	<u>1,323</u>
Total contributions	<u>2,906</u>	<u>1,973</u>	<u>1,403</u>	<u>6,282</u>
Investment income:				
Interest and dividends	1,646	1,424	90	3,160
Net increase in fair value of investments	<u>1,218</u>	<u>1,119</u>	<u>98</u>	<u>2,435</u>
Total investment gain	2,864	2,543	188	5,595
Less investment expenses:				
Investment management fees	<u>204</u>	<u>175</u>	<u>          </u>	<u>379</u>
Net investment income	<u>2,660</u>	<u>2,368</u>	<u>188</u>	<u>5,216</u>
Total additions	<u>5,566</u>	<u>4,341</u>	<u>1,591</u>	<u>11,498</u>
Deductions:				
Benefits paid	2,827	2,113	1,253	6,193
Administration expenses	<u>96</u>	<u>86</u>	<u>56</u>	<u>238</u>
Total deductions	<u>2,923</u>	<u>2,199</u>	<u>1,309</u>	<u>6,431</u>
Change in Net Position	2,643	2,142	282	5,067
Net Position at Beginning of Year	<u>59,330</u>	<u>51,801</u>	<u>4,011</u>	<u>115,142</u>
Net Position at End of Year	<u>\$ 61,973</u>	<u>\$ 53,943</u>	<u>\$ 4,293</u>	<u>\$ 120,209</u>

**7. OTHER INFORMATION**

**A. Risk Management**

The Town is exposed to various risks of loss related to torts; theft of, damage to, and destruction of assets; error and omissions; injuries to employees; and natural disasters. These risks are covered by commercial insurance purchased from independent third parties. Settled claims from these risks did not exceed commercial insurance coverage during the three years ended June 30, 2015.

The Town is a member in the Connecticut Interlocal Risk Management Agency (CIRMA), a public entity risk pool established for the purpose of administering an interlocal risk management program pursuant to the provisions of Section 7-479a et. Seq. of Connecticut General Statutes, for workers' compensation coverage. The Town pays an annual premium for its coverage. CIRMA is to be self-sustaining through members' premiums but reinsures in excess of \$750,000 (not rounded) for each insured occurrence.

**TOWN OF ENFIELD, CONNECTICUT  
NOTES TO FINANCIAL STATEMENTS  
JUNE 30, 2015**

(In Thousands)

The Town has chosen to establish a Self-Insurance Fund for risks associated with the employees' health insurance plan. This fund is accounted for as an Internal Service Fund where assets are set aside for claim settlements. A premium is charged for each employee enrolled in the Town's health insurance plan. The total charge allocated to each of the funds is calculated using employee rates determined by the self-insurance administrator.

Liabilities of the fund are reported when it is probable that a loss has occurred and the amount of the loss can be reasonably estimated. Liabilities include an amount for claims that has been incurred but not reported (IBNR). The result of the process to estimate the claims liability is not an exact amount as it depends on many complex factors, such as inflation, changes in legal doctrines and damage awards. Accordingly, claims are reevaluated periodically to consider the effects of inflation, recent claim settlement trends (including frequency and amount of pay-outs) and other economic and social factors. The estimate of the claims liability also includes amounts for incremental claim adjustment expenses related to specific claims and other claim adjustment expenses regardless of whether allocated to specific claims. Estimated recoveries, for example for salvage or subrogation, are another component of the claims liability estimate. Changes in the claims liability for the past two years are as follows:

	<u>2015</u>	<u>2014</u>
Claims payable, July 1	\$ 1,296	\$ 1,362
Claims incurred and changes in estimates	18,312	19,070
Claim payments	<u>(18,484)</u>	<u>(19,136)</u>
Claims Payable, June 30	<u>\$ 1,124</u>	<u>\$ 1,296</u>

**B. Contingent Liabilities**

There are various suits and claims pending against the Town, none of which, individually or in the aggregate, is believed by counsel to be likely to result in judgment or judgments that could materially affect the Town's financial position.

The Town has received state and federal grants for specific purposes that are subject to review and audit by the grantor agencies. Such audits could lead to requests for reimbursement to the grantor agency for any expenditure disallowed under terms of the grant. Based on prior experience, Town management believes such disallowances, if any, will not be material.

The Town may be subject to rebate penalties to the federal government relating to various bond and note issues. The Town expects such amounts, if any, to be immaterial.

**TOWN OF ENFIELD, CONNECTICUT  
NOTES TO FINANCIAL STATEMENTS  
JUNE 30, 2015**

---

(In Thousands)

**8. PRIOR PERIOD ADJUSTMENT AND RESTATEMENT**

The following restatements were recorded to the beginning of net position of the governmental activities as a result of implementation of GASB Statement No. 68, *Accounting and Financial Reporting for Pensions* - an amendment of GASB Statement No. 27:

Net position at June 30, 2014, as previously reported	\$	223,064
Adjustments:		
Eliminate net pension assets reported per GASB No. 27		(14)
Record net pension liability per GASB No. 68		<u>(7,351)</u>
Net Position at July 1, 2014, as Restated	\$	<u>215,699</u>

**9. SUBSEQUENT EVENTS**

On July 15, 2015, the Town issued \$10,770 of refunding bonds notes maturing on June 15, 2028. The refunding bond carries interest rates ranging between 2.0-5.0%.

On August 11, 2015, the Town issued \$20,000 of general obligation bonds and \$10,000 of bond anticipation notes maturing on August 1, 2035 and August 10, 2016, respectively. The general obligation bond and the bond anticipation note carry interest rates ranging between 3.0-5.0% and 2.0%, respectively.

**REQUIRED  
SUPPLEMENTARY  
INFORMATION**



**TOWN OF ENFIELD, CONNECTICUT  
GENERAL FUND  
SCHEDULE OF REVENUES AND OTHER FINANCING SOURCES -  
BUDGET AND ACTUAL  
FOR THE YEAR ENDED JUNE 30, 2015**

(In Thousands)

	<u>Original Budget</u>	<u>Final Budget</u>	<u>Actual</u>	<u>Variance With Final Budget Positive (Negative)</u>
<b>Property Taxes:</b>				
Real estate	\$ 68,489	\$ 68,489	\$ 68,490	\$ 1
Motor vehicle	7,938	7,938	7,736	(202)
Personal property	5,148	5,148	5,286	138
Prior year levy	300	300	1,745	1,445
Penalties and interest	650	650	1,005	355
Lien fees	10	10	12	2
Tax sale fees		2	7	5
Suspense list collections	10	10	4	(6)
Telephone access line	80	80	80	-
Total property taxes	<u>82,625</u>	<u>82,627</u>	<u>84,365</u>	<u>1,738</u>
<b>Intergovernmental:</b>				
Hospital - PILOT	27	27	27	
Department of Housing - PILOT	80	80	79	(1)
Tax loss - state property	1,301	1,301	1,302	1
Tax loss - bingo	1	1		(1)
Tax relief - elderly frozen	2	2	2	-
Tax relief - elderly circuit breaker	360	360	326	(34)
Tax relief - disability exemption	5	5	5	-
Mashantucket Pequot Indians	1,452	1,452	1,450	(2)
Civil preparedness	12	12		(12)
Municipal revenue sharing	242	242	242	-
Tax relief - veterans additional	40	40	40	-
Town aid road grant	536	536	535	(1)
Education cost sharing	28,974	28,974	28,892	(82)
School transportation	483	483	489	6
Health services private schools	60	60	35	(25)
Miscellaneous federal grants			4	4
Miscellaneous state grants	12	20	37	17
Total intergovernmental	<u>33,587</u>	<u>33,595</u>	<u>33,465</u>	<u>(130)</u>
<b>Charges For Services:</b>				
Recording legal documents	150	150	183	33
Conveyance tax	250	250	246	(4)
Vital statistics	40	40	48	8
Planning and zoning fees	40	40	21	(19)
Zoning board of appeal fees	1	1	2	1
Miscellaneous clerk fees	40	40	36	(4)

(Continued on next page)

**TOWN OF ENFIELD, CONNECTICUT  
GENERAL FUND  
SCHEDULE OF REVENUES AND OTHER FINANCING SOURCES -  
BUDGET AND ACTUAL (CONTINUED)  
FOR THE YEAR ENDED JUNE 30, 2015**

(In Thousands)

	Original Budget	Final Budget	Actual	Variance With Final Budget Positive (Negative)
Photocopy charges	\$ 6	\$ 6	\$ 13	\$ 7
Fire district tax collection	280	280	322	42
Communication center	175	175	99	(76)
Accident reports	4	4	5	1
Environment recycling programs	94	94	149	55
Bulky waste fees	200	200	163	(37)
Medicaid school based health	125	125	299	174
Other charges	2	2	3	1
Building and mechanical	510	553	793	240
Pistol permits	14	14	18	4
Vendor permits	1	1		(1)
Amusements	1	1		(1)
Dog licenses	5	5	5	-
Hunting and fishing	1	1		(1)
Marriage licenses	2	2	2	-
Sewer permits	2	2		(2)
Dump permits	11	11	20	9
Parking fines	7	7	4	(3)
Library fines	12	12	11	(1)
Alarm fines	20	20	12	(8)
Blight ordinance fines	2	2		(2)
Snow removal fines	1	1	13	12
Rental - Town owned property	40	40	72	32
Probate court space rental	12	12	7	(5)
Sale - cash	200	200	327	127
Sale - leaf bags	7	7	3	(4)
Insurance claims and refunds	150	150	85	(65)
Vehicle insurance reimbursement	45	45	2	(43)
Miscellaneous	131	134	59	(75)
Total charges for services	<u>2,581</u>	<u>2,627</u>	<u>3,022</u>	<u>395</u>
Interest:				
Interest on investments	<u>110</u>	<u>110</u>	<u>83</u>	<u>(27)</u>
Other Financing Sources:				
Transfers in	377	377	377	
Use of fund balance	<u>700</u>	<u>1,889</u>	<u>377</u>	<u>(1,889)</u>
Total other financing sources	<u>1,077</u>	<u>2,266</u>	<u>377</u>	<u>(1,889)</u>

(Continued on next page)

**TOWN OF ENFIELD, CONNECTICUT  
 GENERAL FUND  
 SCHEDULE OF REVENUES AND OTHER FINANCING SOURCES -  
 BUDGET AND ACTUAL (CONTINUED)  
 FOR THE YEAR ENDED JUNE 30, 2015**

(In Thousands)

	<u>Original Budget</u>	<u>Final Budget</u>	<u>Actual</u>	<b>Variance With Final Budget Positive (Negative)</b>
Total	\$ <u>119,980</u>	\$ <u>121,225</u>	\$ 121,312	\$ <u>87</u>
Budgetary revenues are different than GAAP revenues because:				
State of Connecticut on-behalf contributions to the Connecticut State Teachers' Retirement System for Town teachers are not budgeted			7,525	
Capital lease issuance				
Excess cost grant revenue is budgeted as a credit to education expenditures			1,267	
Premium on bond issuance			1,449	
Out of district tuition is budgeted as a credit to education expenditures			168	
Funds consolidated for GASB 54 purposes			<u>7,351</u>	
Total Revenues and Other Financing Sources as Reported on the Statement of Revenues, Expenditures and Changes in Fund Balances - Governmental Funds Exhibit IV			\$ <u>139,072</u>	

**TOWN OF ENFIELD, CONNECTICUT  
GENERAL FUND  
SCHEDULE OF EXPENDITURES AND OTHER FINANCING USES -  
BUDGET AND ACTUAL  
FOR THE YEAR ENDED JUNE 30, 2015**

(In Thousands)

	<u>Original Budget</u>	<u>Final Budget</u>	<u>Actual</u>	<u>Variance with Final Budget</u>
General Government:				
Town council	\$ 76	\$ 76	\$ 66	\$ 10
Town manager	466	466	439	27
Data processing and MIS	2,704	2,915	2,915	-
Town attorney	397	426	423	3
Probate court	34	34	21	13
Election/voter registration	125	125	124	1
Town clerk	477	484	482	2
Records manager	72	75	75	-
Personnel office	454	407	395	12
Finance administration	200	205	204	1
Treasury	382	382	378	4
Assessment and revenue collection	574	571	555	16
General services	138	138	138	-
Board of assessment appeals	4	4	3	1
Enfield revitalization committee	2	2	1	1
Cultural arts	9	9	9	-
Ethics committee	1	1		1
Keep Enfield beautiful	9	9	9	-
Historic district commission	3	3	2	1
Loan review committee	1	1		1
Economic development commission	1	1		1
Land use commission	41	56	38	18
Community response team	7	7		7
Total general government	<u>6,177</u>	<u>6,397</u>	<u>6,277</u>	<u>120</u>
Public Safety:				
Police services	11,121	11,201	11,173	28
School security	795	688	669	19
Public safety communications	1,184	1,210	1,196	14
Emergency management	5	5	1	4
Total public safety	<u>13,105</u>	<u>13,104</u>	<u>13,039</u>	<u>65</u>
Public Works:				
Public works administration	670	670	661	9
Maintenance/buildings and grounds	5,346	5,766	5,756	10
Custodial maintenance	4,247	4,057	4,040	17
Highway and sanitation supervision	1,917	2,327	2,302	25
Equipment maintenance and repair	1,221	1,187	1,174	13
Refuse collection	3,391	3,052	3,042	10
Total public works	<u>16,792</u>	<u>17,059</u>	<u>16,975</u>	<u>84</u>

(Continued on next page)

**TOWN OF ENFIELD, CONNECTICUT  
GENERAL FUND  
SCHEDULE OF EXPENDITURES AND OTHER FINANCING USES -  
BUDGET AND ACTUAL (CONTINUED)  
FOR THE YEAR ENDED JUNE 30, 2015**

(In Thousands)

	<u>Original Budget</u>	<u>Final Budget</u>	<u>Actual</u>	<u>Variance with Final Budget</u>
Library:				
Public library	\$ 1,579	\$ 1,634	\$ 1,624	\$ 10
E-TV	84	84	80	4
Total library	<u>1,663</u>	<u>1,718</u>	<u>1,704</u>	<u>14</u>
Planning and Development:				
Town planner	268	275	270	5
Building inspection	376	435	426	9
Community development	178	178	164	14
Economic development	159	187	185	2
Code enforcement	227	164	152	12
Thompsonville Revitalization	271	246	243	3
Total planning and development	<u>1,479</u>	<u>1,485</u>	<u>1,440</u>	<u>45</u>
Intergovernmental and Interagency:				
Capital region council of governments	29	29	29	-
Capital region growth council	9	9	9	-
Enfield cemetery association	34	34	34	-
Enfield historical society	15	15	15	-
Connecticut conference of municipalities	32	32	32	-
National league of cities	4	4		4
Enfield veteran's council	45	45	45	-
District fire marshal fees	1	1		1
North central health district	209	209	209	-
Clean energy committee	1	1		1
Celebrations and special events	62	62	58	4
High school safe graduation	1	1		1
Greater Hartford transit district	6	6	6	-
Housing education resource	4	4	4	-
Connecticut river assembly	1	1		1
Athletic hall of fame	1	1	1	-
Total intergovernmental and interagency	<u>454</u>	<u>454</u>	<u>442</u>	<u>12</u>
Board of Education	<u>64,262</u>	<u>64,262</u>	<u>64,123</u>	<u>139</u>

(Continued on next page)

**TOWN OF ENFIELD, CONNECTICUT  
GENERAL FUND  
SCHEDULE OF EXPENDITURES AND OTHER FINANCING USES -  
BUDGET AND ACTUAL (CONTINUED)  
FOR THE YEAR ENDED JUNE 30, 2015**

(In Thousands)

	<u>Original Budget</u>	<u>Final Budget</u>	<u>Actual</u>	<u>Variance with Final Budget</u>
Nondepartmental:				
Insurance and bond charges	\$ 632	\$ 726	\$ 726	\$ -
Employee benefit	2,824	3,552	3,552	-
Miscellaneous charges	2,444	1,946	1,946	-
Total nondepartmental	<u>5,900</u>	<u>6,224</u>	<u>6,224</u>	<u>-</u>
Debt Service	<u>4,802</u>	<u>4,869</u>	<u>4,869</u>	<u>-</u>
Transfer Out	<u>5,346</u>	<u>5,653</u>	<u>5,653</u>	<u>-</u>
Total	<u>\$ 119,980</u>	<u>\$ 121,225</u>	\$ 120,746	<u>\$ 479</u>

Budgetary expenditures are different than GAAP expenditures because:

State of Connecticut on-behalf payments to the Connecticut State Teachers' Retirement System for Town teachers are not budgeted	7,525
Encumbrances for purchases and commitments ordered but not received are reported in the year the order is placed for budgetary purposes, but in the year received for financial reporting purposes	(31)
Capital lease issuance	
Transfers out eliminated for GASB 54 purposes	(3,241)
Excess cost grant revenue is budgeted as a credit to education expenditures	1,267
Out of district tuition is budgeted as a credit to education expenditures	168
Funds consolidated for GASB 54 purposes	<u>10,301</u>

Total Expenditures and Other Financing Uses as Reported on the Statement of Revenues, Expenditures and Changes in Fund Balances - Governmental Funds - Exhibit IV

\$ 136,735

**TOWN OF ENFIELD, CONNECTICUT**  
**SCHEDULE OF CHANGES IN NET PENSION LIABILITY AND RELATED RATIOS**  
**EMPLOYEE'S PENSION PLAN**  
**LAST TWO FISCAL YEARS**

(In Thousands)

	<u>2014</u>	<u>2015</u>
Total pension liability:		
Service cost	\$ 1,971	\$ 2,064
Interest	4,227	4,457
Differences between expected and actual experience including assumption changes		(627)
Benefit payments, including refunds of member contributions	<u>(2,797)</u>	<u>(2,827)</u>
Net change in total pension liability	3,401	3,067
Total pension liability - beginning	<u>59,675</u>	<u>63,076</u>
Total pension liability - ending	<u>63,076</u>	<u>66,143</u>
Plan fiduciary net position:		
Contributions - employer	2,239	2,128
Contributions - member	711	778
Net investment income	7,808	2,660
Benefit payments, including refunds of member contributions	(2,797)	(2,827)
Administrative expense	<u>(77)</u>	<u>(96)</u>
Net change in plan fiduciary net position	7,884	2,643
Plan fiduciary net position - beginning	<u>51,446</u>	<u>59,330</u>
Plan fiduciary net position - ending	<u>59,330</u>	<u>61,973</u>
Net Pension Liability - Ending	\$ <u>3,746</u>	\$ <u>4,170</u>
Plan fiduciary net position as a percentage of the total pension liability	94.06%	93.70%
Covered-employee payroll	\$ 20,611	\$ 21,017
Net pension liability as a percentage of covered-employee payroll	18.17%	19.84%

**Notes to Schedule:**

*Changes of assumptions.* In 2015, amounts reported as changes of assumptions resulted primarily from adjusting the investment return assumption from 7.25% to 7.00% and from changing the salary scale from 4.25% to 4.25% for the first five years and 4% thereafter.

**TOWN OF ENFIELD, CONNECTICUT**  
**SCHEDULE OF CHANGES IN NET PENSION LIABILITY AND RELATED RATIOS**  
**POLICE PENSION PLAN**  
**LAST TWO FISCAL YEARS**

(In Thousands)

	<u>2014</u>	<u>2015</u>
Total pension liability:		
Service cost	\$ 921	\$ 962
Interest	3,758	3,910
Differences between expected and actual experience		(187)
Benefit payments, including refunds of member contributions	<u>(2,170)</u>	<u>(2,113)</u>
Net change in total pension liability	2,509	2,572
Total pension liability - beginning	<u>52,897</u>	<u>55,406</u>
Total pension liability - ending	<u>55,406</u>	<u>57,978</u>
Plan fiduciary net position:		
Contributions - employer	1,378	1,428
Contributions - member	443	545
Net investment income	6,735	2,368
Benefit payments, including refunds of member contributions	(2,170)	(2,113)
Administrative expense	<u>(78)</u>	<u>(86)</u>
Net change in plan fiduciary net position	6,308	2,142
Plan fiduciary net position - beginning	<u>45,493</u>	<u>51,801</u>
Plan fiduciary net position - ending	<u>51,801</u>	<u>53,943</u>
Net Pension Liability - Ending	<u>\$ 3,605</u>	<u>\$ 4,035</u>
Plan fiduciary net position as a percentage of the total pension liability	93.49%	93.04%
Covered-employee payroll	\$ 5,918	\$ 6,263
Net pension liability as a percentage of covered-employee payroll	60.92%	64.43%



**TOWN OF ENFIELD, CONNECTICUT  
SCHEDULE OF EMPLOYER CONTRIBUTIONS  
EMPLOYEE'S PENSION PLAN  
LAST TEN FISCAL YEARS**

(In Thousands)

	2006	2007	2008	2009	2010	2011	2012	2013	2014	2015
Actuarially determined contribution	\$ 1,148	\$ 1,134	\$ 1,061	\$ 1,171	\$ 1,388	\$ 1,678	\$ 1,699	\$ 2,083	\$ 2,239	\$ 2,128
Contributions in relation to the actuarially determined contribution	1,148	1,134	1,068	1,171	1,397	1,678	1,699	2,083	2,239	2,128
Contribution Deficiency (Excess)	\$ -	\$ -	\$ (7)	\$ -	\$ (9)	\$ -	\$ -	\$ -	\$ -	\$ -
Covered-employee payroll	\$ 17,795	\$ 19,198	\$ 18,873	\$ 19,921	\$ 19,496	\$ 19,894	\$ 20,851	\$ 20,851	\$ 20,611	\$ 21,017
Contributions as a percentage of covered-employee payroll	6.45%	5.91%	5.66%	5.88%	7.17%	8.43%	8.15%	9.99%	10.86%	10.13%

**Notes to Schedule**

Valuation date: July 1, 2014  
 Measurement date: June 30, 2015  
 Actuarially determined contribution rates are calculated as of June 30, two years prior to the end of the fiscal year in which contributions are reported

Methods and assumptions used to determine contribution rates:

Actuarial cost method: Entry Age  
 Amortization method: Changes in assumptions and differences between assumptions and actual experience are recognized over the average remaining years of employment of employees. Differences between expected earnings on plan investments and actual investment earning are recognized over a five year period. Changes in benefit terms are recognized immediately.

Asset valuation method: Valued at contract value with a market value adjustment factor for the Guaranteed Deposit Account Assets and at market value for Separate accounts, which is considered the best representation of Fair value. The market value of Guaranteed Deposit Account is an estimate only and not the result of the precise calculation which would be done at contract discontinuance or to measure the impact of excess withdrawals in any calendar year.

Inflation: 3.50%  
 Salary increases: 4.25% for the first five years and 3% thereafter  
 Investment rate of return: 7.00%, net of investment and contract fees, including inflation  
 Termination: Prudential Term Scale D  
 Survivor's benefit: It is assumed husbands are 3 years older than wives and that 80% of the male participants and 60% of the female participants who are or will become eligible for coverage under the Survivor's Benefit will be survived by an eligible survivor.

Disability: The 1987 Commissioner's Group Disability with a six month elimination period was used.  
 Retirement age: Age 62 is assumed retired at 25% and age 65 at 100%. Participants at or beyond age 65 are assumed to retire  
 Mortality: RP-2000 Group Annuity Mortality Table projected to 2010 for Males or Females, as appropriate.

**TOWN OF ENFIELD, CONNECTICUT  
SCHEDULE OF EMPLOYER CONTRIBUTIONS  
POLICE PENSION PLAN  
LAST TEN FISCAL YEARS**

(In Thousands)

	2006	2007	2008	2009	2010	2011	2012	2013	2014	2015
Actuarially determined contribution	\$ 315	\$ 556	\$ 548	\$ 785	\$ 1,075	\$ 1,218	\$ 1,216	\$ 1,239	\$ 1,378	\$ 1,427
Contributions in relation to the actuarially determined contribution	315	556	551	785	1,082	1,218	1,216	1,239	1,378	1,427
Contribution Deficiency (Excess)	\$ -	\$ -	\$ (3)	\$ -	\$ (7)	\$ -	\$ -	\$ -	\$ -	\$ -
Covered-employee payroll	\$ 5,520	\$ 5,456	\$ 6,008	\$ 5,920	\$ 6,226	\$ 6,636	\$ 6,381	\$ 6,381	\$ 5,918	\$ 6,263
Contributions as a percentage of covered-employee payroll	5.71%	10.19%	9.17%	13.26%	17.38%	18.35%	19.06%	19.42%	23.28%	22.78%

**Notes to Schedule**

Valuation date: July 1, 2014  
Measurement date: June 30, 2015  
Actuarially determined contribution rates are calculated as of June 30, two years prior to the end of the fiscal year in which contributions are reported

Methods and assumptions used to determine contribution rates:

Actuarial cost method: Entry Age  
Amortization method: Changes in assumptions and differences between assumptions and actual experience are recognized over the average remaining years of employment of employees. Differences between expected earnings on plan investments and actual investment earning are recognized over a five year period. Changes in benefit terms are recognized immediately.

Asset valuation method: Valued at contract value with a market value adjustment factor for the Guaranteed Deposit Account Assets and at market value for Separate accounts, which is considered the best representation of Fair value. The market value of Guaranteed Deposit Account is an estimate only and not the result of the precise calculation which would be done at contract discontinuance or to measure the impact of excess withdrawals in any calendar year.

Inflation: 4.00%  
Salary increases: 4.25%, average, including inflation  
Investment rate of return: 7.25%, net of investment and contract fees  
Estimated expenses: \$36  
Termination: Prudential Term Scale D  
Survivor's benefit: It is assumed husbands are 3 years older than wives and that 80% of the male participants and 60% of the female participants who are or will become eligible for coverage under the Survivor's Benefit will be survived by an eligible survivor.

Disability: The 1987 Commissioner's Group Disability with a six month elimination period was used.  
Retirement age: Age of 55 and the completion of 20 years of service. Participants at or beyond this age and service are assumed to retire immediately.  
Mortality: RP-2000 Group Annuity Mortality Table projected to 2010 for Males or Females, as appropriate.

**TOWN OF ENFIELD, CONNECTICUT  
SCHEDULE OF INVESTMENT RETURNS  
LAST TWO FISCAL YEARS**

---

	<u>2015</u>	<u>2014</u>
Annual money-weighted rate of return, net of investment expense:		
Employee's Pension Plan	4.5%	15.2%
Police Pension Plan	4.6%	14.9%

**TOWN OF ENFIELD, CONNECTICUT**  
**SCHEDULE OF THE TOWN'S PROPORTIONATE SHARE OF NET PENSION LIABILITY**  
**TEACHERS RETIREMENT PLAN**  
**LAST FISCAL YEAR**

(In Thousands)

	<u>2015</u>
Town's proportion of the net pension liability	0.00%
Town's proportionate share of the net pension liability	\$ -
State's proportionate share of the net pension liability associated with the Town	<u>100,299</u>
Total	<u>\$ 100,299</u>
Town's covered-employee payroll	\$ 37,326
Town's proportionate share of the net pension liability as a percentage of its covered-employee payroll	0.00%
Plan fiduciary net position as a percentage of the total pension liability	61.51%

**Notes to Schedule**

Changes in benefit terms	None
Changes of assumptions	During 2011, rates of withdrawal, retirement and assumed rates of salary increases were adjusted to reflect actual and anticipated experience. These assumptions were recommended as part of the Experience Study for the System for the five-year period ended June 30, 2010.
Actuarial cost method	Entry age
Amortization method	Level percent of salary, closed
Remaining amortization period	22.4 years
Asset valuation method	4-year smoothed market

# **COMBINING AND INDIVIDUAL FUND STATEMENTS**

# GENERAL FUND

## **GENERAL FUND**

The General Fund is the principal fund of the Town and is used to account for all activities of the Town, except those required to be accounted for in another fund. The general fund accounts for the normal recurring activities of the Town (i.e., general government, public safety, public works, health and social services, education, etc.). These activities are funded principally by property taxes, user fees and grants from other governmental units.

*In addition, the Town has a number of funds that do not meet the definition of a special revenue fund according to GASB Statement No. 54 as their revenues are not committed or restricted to a specific purpose. The following funds are combined with the general fund:*

**General Government Grants** - To account for general government grants

**Schools Miscellaneous** - To account for fees and local funding for rental of school facilities, drivers education, non-grant portion of adult education and retiree insurance co-pays

**Emergency Medical Services** - To account for fees and services for emergency medical aid and transportation

**Revaluation** - To account for funding of ten year revaluation

**Social Services** - To account for the operations of the social service divisions

**Emergency Fuel Bank** - To account for fuel for needy families

**Elderly Relief** - To account for funding for elderly programs

**Recreation** - To account for funding for recreational programs

**Police Outside Services** - To account for police special duty services

**TOWN OF ENFIELD, CONNECTICUT  
GENERAL FUND  
COMBINING BALANCE SHEET  
JUNE 30, 2015**

(In Thousands)

	<u>General</u>	<u>General Government Grants</u>	<u>School Miscellaneous</u>	<u>Emergency Medical Services</u>	<u>Revaluation</u>	<u>Social Services</u>
<b>ASSETS</b>						
Cash and cash equivalents	\$ 12,959	\$ 142	\$ 326	\$	\$ 684	\$ 83
Investments	8,241		778			
Receivables, net	6,249			1,435		189
Due from other funds	4,770					
Advances to other funds	2,492					
Prepaid assets	<u>2,092</u>					
Total Assets	<u>\$ 36,803</u>	<u>\$ 142</u>	<u>\$ 1,104</u>	<u>\$ 1,435</u>	<u>\$ 684</u>	<u>\$ 272</u>
<b>LIABILITIES, DEFERRED INFLOWS OF RESOURCES AND FUND BALANCES</b>						
Liabilities:						
Accounts payable and accrued liabilities	\$ 2,516	\$ 15	\$ 6	\$ 122	\$	\$ 181
Due to other funds	1,586		2	786	516	407
Unearned revenue						4
Total liabilities	<u>4,102</u>	<u>15</u>	<u>8</u>	<u>908</u>	<u>516</u>	<u>592</u>
Deferred Inflows of Resources:						
Unavailable revenue - property taxes	5,555					
Unavailable revenue - EMS receivable				1,168		
Unavailable revenue - grants receivable						22
Advance property tax collections	<u>2,500</u>					
Total deferred inflows of resources	<u>8,055</u>	<u>-</u>	<u>-</u>	<u>1,168</u>	<u>-</u>	<u>22</u>
Fund Balances:						
Nonspendable	4,584					
Committed		127	1,096		168	
Assigned	2,171					
Unassigned	<u>17,891</u>			<u>(641)</u>		<u>(342)</u>
Total fund balances	<u>24,646</u>	<u>127</u>	<u>1,096</u>	<u>(641)</u>	<u>168</u>	<u>(342)</u>
Total Liabilities, Deferred Inflows of Resources and Fund Balances	<u>\$ 36,803</u>	<u>\$ 142</u>	<u>\$ 1,104</u>	<u>\$ 1,435</u>	<u>\$ 684</u>	<u>\$ 272</u>

(Continued on next page)



**TOWN OF ENFIELD, CONNECTICUT  
GENERAL FUND  
COMBINING BALANCE SHEET (CONTINUED)  
JUNE 30, 2015**  
(In Thousands)

	<u>Emergency Fuel Bank</u>	<u>Elderly Relief</u>	<u>Recreation</u>	<u>Police Outside Services</u>	<u>Interfund Eliminations</u>	<u>Total General Fund</u>
<b>ASSETS</b>						
Cash and cash equivalents	\$	\$	\$ 518	\$ 130	\$	\$ 14,842
Investments						9,019
Receivables, net				96		7,969
Due from other funds	5	98			(1,815)	3,058
Advances to other funds						2,492
Prepaid assets			9			2,101
Total Assets	<u>\$ 5</u>	<u>\$ 98</u>	<u>\$ 527</u>	<u>\$ 226</u>	<u>\$ (1,815)</u>	<u>\$ 39,481</u>
<b>LIABILITIES, DEFERRED INFLOWS OF RESOURCES AND FUND BALANCES</b>						
Liabilities:						
Accounts payable and accrued liabilities	\$	\$	\$ 22	\$ 15	\$	\$ 2,877
Due to other funds					(1,815)	1,482
Unearned revenue			71			75
Total liabilities	<u>-</u>	<u>-</u>	<u>93</u>	<u>15</u>	<u>(1,815)</u>	<u>4,434</u>
Deferred Inflows of Resources:						
Unavailable revenue - property taxes						5,555
Unavailable revenue - EMS receivable						1,168
Unavailable revenue - grants receivable						22
Advance property tax collections						2,500
Total deferred inflows of resources	<u>-</u>	<u>-</u>	<u>-</u>	<u>-</u>	<u>-</u>	<u>9,245</u>
Fund Balances:						
Nonspendable			9			4,593
Committed	5	98	425	211		2,130
Assigned						2,171
Unassigned						16,908
Total fund balances	<u>5</u>	<u>98</u>	<u>434</u>	<u>211</u>	<u>-</u>	<u>25,802</u>
Total Liabilities, Deferred Inflows of Resources and Fund Balances	<u>\$ 5</u>	<u>\$ 98</u>	<u>\$ 527</u>	<u>\$ 226</u>	<u>\$ (1,815)</u>	<u>\$ 39,481</u>

**TOWN OF ENFIELD, CONNECTICUT  
GENERAL FUND  
COMBINING SCHEDULE OF REVENUES, EXPENDITURES AND CHANGES IN FUND BALANCES  
FOR THE YEAR ENDED JUNE 30, 2015**

(In Thousands)

	<u>General</u>	<u>General Government Grants</u>	<u>School Miscellaneous</u>	<u>Emergency Medical Services</u>	<u>Revaluation</u>	<u>Social Services</u>
Revenues:						
Property taxes	\$ 84,366	\$	\$	\$	\$	\$
Intergovernmental	42,561	32				2,045
Charges for services	2,886	16	256	2,115		1,681
Contributions				2		230
Investment income	82		22			
Total revenues	<u>129,895</u>	<u>48</u>	<u>278</u>	<u>2,117</u>	<u>-</u>	<u>3,956</u>
Expenditures:						
Current:						
General government	6,277	38				
Public safety services	13,039					
Public works	16,975					
Health and social services				3,147		5,770
Library	1,694					
Planning and development	1,418					
Intergovernmental and interagency	442					
Education	73,083		399			
Non-departmental	6,225					
Capital outlay						
Debt service	4,869					
Total expenditures	<u>124,022</u>	<u>38</u>	<u>399</u>	<u>3,147</u>	<u>-</u>	<u>5,770</u>
Excess (Deficiency) of Revenues over Expenditures	<u>5,873</u>	<u>10</u>	<u>(121)</u>	<u>(1,030)</u>	<u>-</u>	<u>(1,814)</u>
Other Financing Sources (Uses):						
Premium on bond issuance	1,449					
Transfers in	377			1,025	90	1,945
Transfers out	(5,653)					
Net other financing sources (uses)	<u>(3,827)</u>	<u>-</u>	<u>-</u>	<u>1,025</u>	<u>90</u>	<u>1,945</u>
Net Change in Fund Balances	2,046	10	(121)	(5)	90	131
Fund Balances at Beginning of Year	<u>22,600</u>	<u>117</u>	<u>1,217</u>	<u>(636)</u>	<u>78</u>	<u>(473)</u>
Fund Balances at End of Year	<u>\$ 24,646</u>	<u>\$ 127</u>	<u>\$ 1,096</u>	<u>\$ (641)</u>	<u>\$ 168</u>	<u>\$ (342)</u>

(Continued on next page)

**TOWN OF ENFIELD, CONNECTICUT  
GENERAL FUND  
COMBINING SCHEDULE OF REVENUES, EXPENDITURES AND CHANGES IN FUND BALANCES (CONTINUED)  
FOR THE YEAR ENDED JUNE 30, 2015**

(In Thousands)

	<u>Emergency Fuel Bank</u>	<u>Elderly Relief</u>	<u>Recreation</u>	<u>Police Outside Services</u>	<u>Interfund Eliminations</u>	<u>Total General Fund</u>
Revenues:						
Property taxes	\$	\$	\$	\$	\$	84,366
Intergovernmental						44,638
Charges for services			190	582		7,726
Contributions						232
Investment income						104
Total revenues	<u>-</u>	<u>-</u>	<u>190</u>	<u>582</u>	<u>-</u>	<u>137,066</u>
Expenditures:						
Current:						
General government			443			6,758
Public safety services				504		13,543
Public works						16,975
Health and social services						8,917
Library						1,694
Planning and development						1,418
Intergovernmental and interagency						442
Education						73,482
Non-departmental						6,225
Capital outlay						
Debt service						4,869
Total expenditures	<u>-</u>	<u>-</u>	<u>443</u>	<u>504</u>	<u>-</u>	<u>134,323</u>
Excess (Deficiency) of Revenues over Expenditures	<u>-</u>	<u>-</u>	<u>(253)</u>	<u>78</u>	<u>-</u>	<u>2,743</u>
Other Financing Sources (Uses):						
Premium on bond issuance						1,449
Transfers in			361		(3,241)	557
Transfers out					3,241	(2,412)
Net other financing sources (uses)	<u>-</u>	<u>-</u>	<u>361</u>	<u>-</u>	<u>-</u>	<u>(406)</u>
Net Change in Fund Balances	-	-	108	78	-	2,337
Fund Balances at Beginning of Year	<u>5</u>	<u>98</u>	<u>326</u>	<u>133</u>		<u>23,465</u>
Fund Balances at End of Year	<u>\$ 5</u>	<u>\$ 98</u>	<u>\$ 434</u>	<u>\$ 211</u>	<u>\$ -</u>	<u>\$ 25,802</u>

**TOWN OF ENFIELD, CONNECTICUT  
GENERAL FUND  
REPORT OF TAX COLLECTOR  
FOR THE YEAR ENDED JUNE 30, 2015**

(In Thousands)

Grand List Year	Uncollected Taxes July 1, 2014	Lawful Corrections		Transfers to Suspense	Adjusted Amount Collectible	Collections			Uncollected Taxes June 30, 2015	
		Additions	Deductions			Taxes	Suspense Collections	Interest and Lien Fees		Total
<b>Town Taxes:</b>										
2013	\$ 83,320	\$ 101	\$ 238	\$	\$ 83,183	\$ 81,517	\$	\$ 333	\$ 81,850	\$ 1,666
2012	1,704	70	22		1,752	1,070		330	1,400	682
2011	735	66	22		779	405		141	546	374
2010	427		2		425	158		84	242	267
2009	294		1		293	37		28	65	256
2008	246		1		245	19		19	38	226
2007	290		17		273	12		53	65	261
2006	242				242	7		10	17	235
2005	352				352	8		12	20	344
2004	387				387	5		12	17	382
2003	253				253	4		5	9	249
2002	46				46	2		3	5	44
2001	23				23	1	1	2	4	22
2000	20	1			21			1	1	21
1999	20				20			1	1	20
1998	17				17			1	1	17
<b>Town Tax Total</b>	<b>88,376</b>	<b>238</b>	<b>303</b>	<b>-</b>	<b>88,311</b>	<b>83,245</b>	<b>1</b>	<b>1,035</b>	<b>84,281</b>	<b>5,066</b>
<b>Fire Taxes:</b>										
2013	10,831	147	280		10,698	10,514		47	10,561	184
2012	178	12	4		186	117		28	145	69
2011	84	9			93	44		16	60	49
2010	50		1		49	13		9	22	36
2009	35	1			36	4		4	8	32
2008	29				29	1		2	3	28
2007	34		1		33	1		1	2	32
2006	29				29	1		1	2	28
2005	43				43	1		1	2	42
2004	37				37			1	1	37
2003	27				27				-	27
2002	4	1			5				-	5
2001	3		1		2				-	2
2000	3		1		2				-	2
1999	2				2				-	2
1998	2				2				-	2
<b>Fire Tax Total</b>	<b>11,391</b>	<b>170</b>	<b>288</b>	<b>-</b>	<b>11,273</b>	<b>10,696</b>	<b></b>	<b>110</b>	<b>10,806</b>	<b>577</b>
<b>Total</b>	<b>\$ 99,767</b>	<b>\$ 408</b>	<b>\$ 591</b>	<b>\$ -</b>	<b>\$ 99,584</b>	<b>\$ 93,941</b>	<b>\$ 1</b>	<b>\$ 1,145</b>	<b>\$ 95,087</b>	<b>\$ 5,643</b>

**TOWN OF ENFIELD, CONNECTICUT**  
**SCHEDULE OF REVENUES, EXPENDITURES AND CHANGES IN FUND BALANCES**  
**BUDGET AND ACTUAL - BUDGETARY BASIS - SOCIAL SERVICES FUND**  
**FOR THE YEAR ENDED JUNE 30, 2015**

(In Thousands)

	<u>Original Budget</u>	<u>Final Budget</u>	<u>Actual</u>	<u>Variance With Final Budget Over (Under)</u>
<b>Revenues:</b>				
Intergovernmental	\$ 1,978	\$ 2,268	\$ 2,045	\$ (223)
Charges for services	1,851	1,839	1,681	(158)
Contributions	132	128	230	102
Use of fund balance	20	106		(106)
Total revenues	<u>3,981</u>	<u>4,341</u>	<u>3,956</u>	<u>(385)</u>
<b>Expenditures:</b>				
<b>Current:</b>				
Health and social services	<u>5,918</u>	<u>6,286</u>	<u>5,895</u>	<u>391</u>
Total expenditures	<u>5,918</u>	<u>6,286</u>	<u>5,895</u>	<u>391</u>
Deficiency of Revenues over Expenditures	(1,937)	(1,945)	(1,939)	6
<b>Other Financing Sources:</b>				
Transfers in	<u>1,937</u>	<u>1,945</u>	<u>1,945</u>	<u>-</u>
Net Change in Fund Balance	<u>\$ -</u>	<u>\$ -</u>	6	<u>\$ 6</u>
Fund Balance at Beginning of Year			<u>(414)</u>	
Fund Balance at End of Year			<u>\$ (408)</u>	
<b>Reconciliation to GAAP Basis</b>				
	<u>Revenues</u>	<u>Expenditures</u>	<u>Fund Balance</u>	
Balance, Budgetary Basis - June 30, 2015	\$ 3,956	\$ 5,895	\$ (408)	
Encumbrances outstanding at end of year, charged to budgetary expenditures		(125)	125	
Prior year encumbrances charged to budgetary last year			<u>(59)</u>	
Balance, GAAP basis - June 30, 2015	<u>\$ 3,956</u>	<u>\$ 5,770</u>	<u>\$ (342)</u>	

**TOWN OF ENFIELD, CONNECTICUT**  
**SCHEDULE OF REVENUES, EXPENDITURES AND CHANGES IN FUND BALANCES**  
**BUDGET AND ACTUAL - BUDGETARY BASIS - EMERGENCY MEDICAL SERVICES FUND**  
**FOR THE YEAR ENDED JUNE 30, 2015**

(In Thousands)

	<u>Original Budget</u>	<u>Final Budget</u>	<u>Actual</u>	<u>Variance With Final Budget Over (Under)</u>
Revenues:				
Charges for services	\$ 2,160	\$ 2,160	\$ 2,115	\$ (45)
Contributions			2	2
Total revenues	<u>2,160</u>	<u>2,160</u>	<u>2,117</u>	<u>(43)</u>
Expenditures:				
Current:				
Health and social services	<u>3,111</u>	<u>3,398</u>	<u>3,189</u>	<u>209</u>
Deficiency of Revenues over Expenditures	<u>(951)</u>	<u>(1,238)</u>	<u>(1,072)</u>	<u>166</u>
Other Financing Sources:				
Transfers in	951	1,034	1,025	(9)
Use of fund balance		204		(204)
Total other financing sources	<u>951</u>	<u>1,238</u>	<u>1,025</u>	<u>(213)</u>
Net Change in Fund Balance	<u>\$ -</u>	<u>\$ -</u>	(47)	<u>\$ (47)</u>
Fund Balance at Beginning of Year			<u>(840)</u>	
Fund Balance at End of Year			<u>\$ (887)</u>	

Reconciliation to GAAP Basis

	<u>Expenditures</u>	<u>Fund Balance</u>
Balance, Budgetary Basis - June 30, 2015	\$ 3,189	\$ (887)
Encumbrances outstanding at end of year, charged to budgetary expenditures	(246)	246
Prior year encumbrances charged to budgetary last year	<u>204</u>	
Balance, GAAP basis - June 30, 2015	<u>\$ 3,147</u>	<u>\$ (641)</u>

**NONMAJOR  
GOVERNMENTAL  
FUNDS**

## **SPECIAL REVENUE FUNDS**

Special Revenue Funds are used to account for the proceeds of specific revenue sources (other than expendable trusts or major capital projects) that are legally restricted to expenditures for specific purposes. The Special Revenue Funds utilize the modified accrual basis of accounting. The nature and purpose of each Special Revenue Fund is as follows:

<b>Fund</b>	<b>Funding Source</b>	<b>Function</b>
Cafeteria	Sales and grants	School lunch program
Dog	License fees, fines and Town appropriation	Operation of animal control
Open Space Acquisition	Local funding	General government
Community Development	Federal grants	Federal housing funds
Public Library	State funds and public gifts	Library support
Drug Enforcement Education Grants	State grant	Drug enforcement activities
Town Memorial	Donations	Town Green and Memorial
Educational Grants	State and Federal grants	Special Education programs
Scholarship	Donations	Student scholarships
Maciolek Post Ambulance	Donations	Purchase of ambulances

## **Permanent Funds**

Permanent funds are used to report resources that are legally restricted to the extent that only earnings, not principal, may be used for purposes as categorized by the fund title. The Library Trust Fund is the Town's only permanent fund. It accounts for the funds endowed to the Town to benefit the Town's Library services. (Phelps Fund, H.F. Fletcher Fund, J. Pickens Fund, C. P. Cope Fund, H.A. Mosley Fund and Wrona Fund).



**TOWN OF ENFIELD, CONNECTICUT  
NONMAJOR GOVERNMENTAL FUNDS  
COMBINING BALANCE SHEET  
JUNE 30, 2015**

(In Thousands)

	Special Revenue Funds										Permanent Funds	Total Nonmajor Governmental Funds
	Cafeteria	Dog	Open Space Acquisition	Community Development	Public Library	Drug Enforcement Education Grant	Town Memorial	Scholarship	Educational Grants	Macioek Post Ambulance	Library Trust	
<b>ASSETS</b>												
Cash	\$ 493	\$ 54	\$ 772	\$ 598	\$ 217	\$ 92	\$ 97	\$ 284	\$ 125	\$ 231	\$ 63	\$ 3,026
Investments					69							69
Receivables	190			1,695		55			33			1,973
Due from other funds									8			8
Inventory	87											87
<b>Total Assets</b>	<b>\$ 770</b>	<b>\$ 54</b>	<b>\$ 772</b>	<b>\$ 2,293</b>	<b>\$ 286</b>	<b>\$ 147</b>	<b>\$ 97</b>	<b>\$ 284</b>	<b>\$ 166</b>	<b>\$ 231</b>	<b>\$ 63</b>	<b>\$ 5,163</b>
<b>LIABILITIES, DEFERRED INFLOWS OF RESOURCES AND FUND BALANCES</b>												
Liabilities:												
Accounts payable and accrued liabilities	\$ 16	\$ 31	\$	\$ 3	\$ 7	\$ 3	\$	\$	\$ 8	\$	\$	\$ 68
Due to other funds			163	309								472
Unearned revenue	10							158				168
<b>Total liabilities</b>	<b>26</b>	<b>31</b>	<b>163</b>	<b>312</b>	<b>7</b>	<b>3</b>	<b>-</b>	<b>-</b>	<b>166</b>	<b>-</b>	<b>-</b>	<b>708</b>
Deferred Inflows of Resources:												
Unavailable revenue - grants receivable				1,695								1,695
Unavailable revenue - loans receivable												
<b>Total deferred inflows of resources</b>	<b>-</b>	<b>-</b>	<b>-</b>	<b>1,695</b>	<b>-</b>	<b>-</b>	<b>-</b>	<b>-</b>	<b>-</b>	<b>-</b>	<b>-</b>	<b>1,695</b>
Fund Balances:												
Nonspendable	87										37	124
Restricted	657					144						801
Committed		23	609	286	279	97	284		231	26		1,835
<b>Total fund balances</b>	<b>744</b>	<b>23</b>	<b>609</b>	<b>286</b>	<b>279</b>	<b>144</b>	<b>97</b>	<b>284</b>	<b>-</b>	<b>231</b>	<b>63</b>	<b>2,760</b>
<b>Total Liabilities, Deferred Inflows of Resources and Fund Balances</b>	<b>\$ 770</b>	<b>\$ 54</b>	<b>\$ 772</b>	<b>\$ 2,293</b>	<b>\$ 286</b>	<b>\$ 147</b>	<b>\$ 97</b>	<b>\$ 284</b>	<b>\$ 166</b>	<b>\$ 231</b>	<b>\$ 63</b>	<b>\$ 5,163</b>

**TOWN OF ENFIELD, CONNECTICUT  
NONMAJOR GOVERNMENTAL FUNDS  
COMBINING STATEMENT OF REVENUES, EXPENDITURES AND  
CHANGES IN FUND BALANCES  
FOR THE YEAR ENDED JUNE 30, 2015**

(In Thousands)

	Special Revenue Funds										Permanent Fund	Total Nonmajor Governmental Funds
	Cafeteria	Dog	Open Space Acquisition	Community Development	Public Library	Drug Enforcement Education Grant	Town Memorial	Scholarship	Educational Grants	Macioek Post Ambulance		
Revenues:												
Intergovernmental	\$ 967	\$	\$	241	\$ 9	\$ 110	\$	\$	4,052	\$	\$	\$ 5,379
Charges for services	838	22		45	4							909
Investment income	1				12							13
Contributions and donations		4			1	38						43
Other income					5							5
Total revenues	<u>1,806</u>	<u>26</u>	<u>-</u>	<u>286</u>	<u>31</u>	<u>110</u>	<u>38</u>	<u>-</u>	<u>4,052</u>	<u>-</u>	<u>-</u>	<u>6,349</u>
Expenditures:												
Current:												
General government				305		34						339
Public safety		50					122					172
Library					30							30
Education	1,791							15	4,052			5,858
Total expenditures	<u>1,791</u>	<u>50</u>	<u>-</u>	<u>305</u>	<u>30</u>	<u>34</u>	<u>122</u>	<u>15</u>	<u>4,052</u>	<u>-</u>	<u>-</u>	<u>6,399</u>
Excess (Deficiency) of Revenues over Expenditures	<u>15</u>	<u>(24)</u>	<u>-</u>	<u>(19)</u>	<u>1</u>	<u>(12)</u>	<u>4</u>	<u>(15)</u>	<u>-</u>	<u>-</u>	<u>-</u>	<u>(50)</u>
Other Financing Sources (Uses):												
Transfers in		12					41					53
Transfers out									(180)			(180)
Net other financing sources (uses)	<u>-</u>	<u>12</u>	<u>-</u>	<u>-</u>	<u>-</u>	<u>41</u>	<u>-</u>	<u>-</u>	<u>(180)</u>	<u>-</u>	<u>-</u>	<u>(127)</u>
Net Change in Fund Balances	15	(12)	-	(19)	1	29	4	(15)	-	(180)	-	(177)
Fund Balances at Beginning of Year	729	35	609	305	278	115	93	299		411	63	2,937
Fund Balances at End of Year	<u>\$ 744</u>	<u>\$ 23</u>	<u>\$ 609</u>	<u>\$ 286</u>	<u>\$ 279</u>	<u>\$ 144</u>	<u>\$ 97</u>	<u>\$ 284</u>	<u>\$ -</u>	<u>\$ 231</u>	<u>\$ 63</u>	<u>\$ 2,760</u>

**TOWN OF ENFIELD, CONNECTICUT  
SCHEDULE OF REVENUES, EXPENDITURES AND CHANGES IN FUND BALANCE  
BUDGET AND ACTUAL - BUDGETARY BASIS - WATER POLLUTION CONTROL FUND  
FOR THE YEAR ENDED JUNE 30, 2015**

(In Thousands)

	<u>Original Budget</u>	<u>Final Budget</u>	<u>Actual</u>	<u>Variance With Final Budget Over (Under)</u>
Revenues:				
Property taxes	\$	\$	\$ 139	\$ 139
Intergovernmental revenue	311	311	264	(47)
Charges for services	5,900	5,900	4,203	(1,697)
Other revenue	15	15	3	(12)
Total revenues	<u>6,226</u>	<u>6,226</u>	<u>4,609</u>	<u>(1,617)</u>
Expenditures:				
Current:				
Public works	5,511	6,075	5,480	595
Total expenditures	<u>5,511</u>	<u>6,075</u>	<u>5,480</u>	<u>595</u>
Excess of (Deficiency) Revenues over Expenditures	<u>715</u>	<u>151</u>	<u>(871)</u>	<u>(1,022)</u>
Other Financing Uses:				
Use of fund balance		564		(564)
Transfers out	(715)	(715)	(377)	338
Total other financing uses	<u>(715)</u>	<u>(151)</u>	<u>(377)</u>	<u>(226)</u>
Net Change in Fund Balance	<u>\$ -</u>	<u>\$ -</u>	(1,248)	<u>\$ (1,248)</u>
Fund Balance at Beginning of Year			<u>(3,561)</u>	
Fund Balance at End of Year			<u>\$ (4,809)</u>	
<u>Reconciliation to GAAP Basis</u>				
	<u>Expenditures</u>	<u>Fund Balance</u>		
Balance, Budgetary Basis - End of Year	\$ 5,857	\$ (4,809)		
Encumbrances outstanding at end of year, charged to budgetary expenditures	<u>(1,129)</u>	<u>1,129</u>		
Balance, GAAP Basis - June 30, 2015	<u>\$ 4,728</u>	<u>\$ (3,680)</u>		

# INTERNAL SERVICE FUNDS

Internal Service funds are used for the financing of goods and services provided by one department or agency to other departments or agencies of the Town, or to other governments, on a cost reimbursement basis.

**Health Insurance Fund** - To account for the revenues and related expenses for the health self-insurance plan for employees.

**Information Technology Fund** - Accounts for the financial operation of the central information systems department.

**Commercial Liability Fund** - Accounts for the commercial liability insurance activities at the Town.

**TOWN OF ENFIELD, CONNECTICUT**  
**COMBINING STATEMENT OF NET POSITION**  
**INTERNAL SERVICE FUNDS**  
**JUNE 30, 2015**

(In Thousands)

	<u>Health Insurance Fund</u>	<u>Information Technology Fund</u>	<u>Commercial Liability Fund</u>	<u>Total</u>
Assets:				
Cash and cash equivalents	\$ 1,649	\$	\$ 1,159	\$ 2,808
Investments			402	402
Accounts receivable, net	17	49		66
Prepaid items		15	2	17
Due from other funds	<u>1,183</u>			<u>1,183</u>
 Total assets	 <u>2,849</u>	 <u>64</u>	 <u>1,563</u>	 <u>4,476</u>
Liabilities:				
Accounts payable and accrued expenses		56	73	129
Claims payable	1,124			1,124
Due to other funds	<u>14</u>	<u>41</u>		<u>55</u>
 Total liabilities	 <u>1,138</u>	 <u>97</u>	 <u>73</u>	 <u>1,308</u>
Net Position:				
Unrestricted	<u>1,711</u>	<u>(33)</u>	<u>1,490</u>	<u>3,168</u>
 Total Net Position	 <u>\$ 1,711</u>	 <u>\$ (33)</u>	 <u>\$ 1,490</u>	 <u>\$ 3,168</u>

**TOWN OF ENFIELD, CONNECTICUT  
 COMBINING STATEMENT OF REVENUES, EXPENSES AND CHANGES  
 IN NET POSITION - INTERNAL SERVICE FUNDS  
 FOR THE YEAR ENDED JUNE 30, 2015**

(In Thousands)

	<u>Health Insurance Fund</u>	<u>Information Technology Fund</u>	<u>Commercial Liability Fund</u>	<u>Total</u>
Operating Revenues:				
Charges for services	\$ 15,053	\$ 3,661	\$ 1,268	\$ 19,982
Intergovernmental		39		39
Total operating revenues	<u>15,053</u>	<u>3,700</u>	<u>1,268</u>	<u>20,021</u>
Operating Expenses:				
Health insurance claims	18,484			18,484
Risk management claims			1,268	1,268
Technology services		3,753		3,753
Total operating expenses	<u>18,484</u>	<u>3,753</u>	<u>1,268</u>	<u>23,505</u>
Operating Loss	(3,431)	(53)		(3,484)
Nonoperating Revenues:				
Income on investments	<u>2</u>		<u>4</u>	<u>6</u>
Change in Net Position	(3,429)	(53)	4	(3,478)
Net Position at Beginning of Year	<u>5,140</u>	<u>20</u>	<u>1,486</u>	<u>6,646</u>
Net Position at End of Year	<u>\$ 1,711</u>	<u>\$ (33)</u>	<u>\$ 1,490</u>	<u>\$ 3,168</u>

**TOWN OF ENFIELD, CONNECTICUT**  
**COMBINING STATEMENT OF CASH FLOWS**  
**INTERNAL SERVICE FUNDS**  
**FOR THE YEAR ENDED JUNE 30, 2015**

(In Thousands)

	<b>Health Insurance Fund</b>	<b>Information Technology Fund</b>	<b>Commercial Liability Fund</b>	<b>Total</b>
Cash Flows from Operating Activities:				
Receipts from charges for services	\$ 15,144	\$ 3,683	\$ 1,268	\$ 20,095
Payments for claims, premiums and fees	<u>(18,684)</u>	<u>(3,793)</u>	<u>(1,528)</u>	<u>(24,005)</u>
Net cash used in operating activities	<u>(3,540)</u>	<u>(110)</u>	<u>(260)</u>	<u>(3,910)</u>
Cash Flows from Investing Activities:				
Sales of investments			727	727
Investment income	<u>2</u>		<u>4</u>	<u>6</u>
Net cash provided by investing activities	<u>2</u>	<u>-</u>	<u>731</u>	<u>733</u>
Net Increase (Decrease) in Cash and Cash Equivalents	(3,538)	(110)	471	(3,177)
Cash and Cash Equivalents at Beginning of Year	<u>5,187</u>	<u>110</u>	<u>688</u>	<u>5,985</u>
Cash and Cash Equivalents at End of Year	<u>\$ 1,649</u>	<u>\$ -</u>	<u>\$ 1,159</u>	<u>\$ 2,808</u>
Reconciliation of Operating Loss to Net Cash				
Used in Operating Activities:				
Operating loss	\$ <u>(3,431)</u>	\$ <u>(53)</u>	\$ _____	\$ <u>(3,484)</u>
Adjustments to reconcile operating income (loss) to net cash provided by (used in) operating activities:				
Change in assets and liabilities:				
Decrease (increase) in accounts receivable	(11)	(17)		(28)
Decrease (increase) in prepaid expenses		(15)		(15)
Decrease (increase) in due from other funds	102			102
Increase (decrease) in accounts payable and other payables	(42)	(66)	57	(51)
Increase (decrease) in claims payable	(172)			(172)
Increase (decrease) in due to other funds	<u>14</u>	<u>41</u>	<u>(317)</u>	<u>(262)</u>
Total adjustments	<u>(109)</u>	<u>(57)</u>	<u>(260)</u>	<u>(426)</u>
Net Cash Used in Operating Activities	<u>\$ (3,540)</u>	<u>\$ (110)</u>	<u>\$ (260)</u>	<u>\$ (3,910)</u>

# FIDUCIARY FUNDS

## **Trust Funds**

The *Pension Trust Fund* is used to account for the activities of the Enfield Employees Retirement System.

The *OPEB Trust Fund* is used to account for the retiree health benefits of the single-employer defined benefit plan.

## **Agency Funds**

Agency funds are custodial in nature and do not involve measurement of results of operations, but are merely clearing accounts. There is no fund equity. The Town has seven agency funds: The Student Activity Funds, Performance Bonds Fund, Employee Insurance - Board of Education Fund, Cultural Arts Commission Fund, and Smyth Bus Contract Bond Fund. The Student Activity Funds account for monies generated by student activities in the Enfield School System.



**TOWN OF ENFIELD, CONNECTICUT**  
**COMBINING STATEMENT OF NET POSITION - TRUST FUNDS**  
**JUNE 30, 2015**

(In Thousands)

	<u>Pension</u> <u>Trust Fund</u>	<u>OPEB</u> <u>Trust Fund</u>	<u>Total</u>
Assets:			
Cash and cash equivalents	\$ _____	\$ 163	\$ 163
Investments:			
Certificates of deposit			
Stocks		2,483	2,483
Municipal bonds		606	606
Corporate bonds		256	256
Deferred retirement option program	1,039		1,039
Mutual funds		785	785
Guaranteed deposit	21,698		21,698
Insurance company-pooled separate account	85,944		85,944
Real estate funds	7,235		7,235
Total investments	<u>115,916</u>	<u>4,130</u>	<u>120,046</u>
 Total assets	 <u>\$ 115,916</u>	 <u>\$ 4,293</u>	 <u>\$ 120,209</u>
Net Position:			
Held in Trust for Other Purposes	\$ <u>115,916</u>	\$ <u>4,293</u>	\$ <u>120,209</u>

**TOWN OF ENFIELD, CONNECTICUT**  
**COMBINING STATEMENT OF CHANGES IN NET POSITION - TRUST FUNDS**  
**FOR THE YEAR ENDED JUNE 30, 2015**

(In Thousands)

	<u>Pension</u> <u>Trust Fund</u>	<u>OPEB</u> <u>Trust Fund</u>	<u>Total</u>
Additions:			
Contributions:			
Employer contributions	\$ 3,556	\$ 1,403	\$ 4,959
Employee contributions	1,323		1,323
Total contributions	<u>4,879</u>	<u>1,403</u>	<u>6,282</u>
Investment income:			
Interest and dividends	3,070	90	3,160
Net increase in fair value of investments	<u>2,337</u>	<u>98</u>	<u>2,435</u>
Total investment gain	5,407	188	5,595
Less investment expenses:			
Investment management fees	<u>379</u>		<u>379</u>
Net investment income	<u>5,028</u>	<u>188</u>	<u>5,216</u>
Total additions	<u>9,907</u>	<u>1,591</u>	<u>11,498</u>
Deductions:			
Benefits paid	4,940	1,253	6,193
Administration expenses	<u>182</u>	<u>56</u>	<u>238</u>
Total deductions	<u>5,122</u>	<u>1,309</u>	<u>6,431</u>
Change in Net Position	4,785	282	5,067
Net Position at Beginning of Year	<u>111,131</u>	<u>4,011</u>	<u>115,142</u>
Net Position at End of Year	<u>\$ 115,916</u>	<u>\$ 4,293</u>	<u>\$ 120,209</u>

**TOWN OF ENFIELD, CONNECTICUT**  
**AGENCY FUND**  
**COMBINING STATEMENT OF CHANGES IN ASSETS AND LIABILITIES**  
**FOR THE YEAR ENDED JUNE 30, 2015**

(In Thousands)

	<u>Balance</u> <u>July 1, 2014</u>	<u>Additions</u>	<u>Deductions</u>	<u>Balance</u> <u>June 30, 2015</u>
Assets:				
Cash and cash equivalents:				
Student activity funds	\$ 417	\$ 678	\$ 681	\$ 414
Employee Insurance - Board of Education	25	66	75	16
Performance bonds	1,088	142	279	951
Cultural Arts Commission	27	13	10	30
Smyth Bus Contract Bond	100			100
Total cash and cash equivalents	<u>1,657</u>	<u>899</u>	<u>1,045</u>	<u>1,511</u>
Total Assets	<u>\$ 1,657</u>	<u>\$ 899</u>	<u>\$ 1,045</u>	<u>\$ 1,511</u>
Liabilities:				
Deposits held for others:				
Student activity funds	\$ 390	\$ 678	\$ 681	\$ 387
Employee Insurance - Board of Education	25	66	75	16
Performance bonds	863	142	54	951
Cultural Arts Commission	27	13	10	30
Smyth Bus Contract Bond	100			100
Total deposits held for others	<u>1,405</u>	<u>899</u>	<u>820</u>	<u>1,484</u>
Accounts payable:				
Student activity funds	27			27
Performance bonds	225		225	-
Total accounts payable	<u>252</u>	<u>-</u>	<u>225</u>	<u>27</u>
Total Liabilities	<u>\$ 1,657</u>	<u>\$ 899</u>	<u>\$ 1,045</u>	<u>\$ 1,511</u>

# STATISTICAL SECTION

The objectives of statistical section information are to provide financial statement users with additional historical perspective, context and detail to assist in using the information in the financial statements, notes to financial statements and required supplementary information to understand and assess economic condition.

Statistical section information is presented in the following categories:

- *Financial trends information* is intended to assist users in understanding and assessing how financial position has changed over time.
- *Revenue capacity information* is intended to assist users in understanding and assessing the factors affecting the ability to generate *own-source revenues* (property taxes, charges for services, etc.).
- *Debt capacity information* is intended to assist users in understanding and assessing debt burden and the ability to issue additional debt.
- *Demographic and economic information* is intended 1) to assist users in understanding the socioeconomic environment and 2) to provide information that facilitates comparisons of financial statement information over time and among governments.
- *Operating information* is intended to provide contextual information about operations and resources to assist readers in using financial statement information to understand and assess economic condition.

The accompanying tables are presented in the above order. Refer to the Table of Contents for applicable page number locations.

Sources: Unless otherwise noted, the information in the tables is derived from the comprehensive annual financial reports for the relevant year.

**TOWN OF ENFIELD, CONNECTICUT  
NET POSITION BY COMPONENT  
LAST TEN FISCAL YEARS**

(In Thousands)

	Fiscal Year									
	2006	2007	2008	2009	2010	2011	2012	2013	2014	2015
Governmental Activities:										
Net investment in capital assets	\$ 94,180	\$ 183,330	\$ 182,424	\$ 174,618	\$ 186,149	\$ 189,683	\$ 191,750	\$ 189,574	\$ 192,678	\$ 221,663
Restricted	60	62	64	65	1,905	6,057	1,983	1,852	1,782	1,758
Unrestricted	31,799	34,133	36,178	41,210	27,376	24,273	26,465	29,354	21,239	18,082
<b>Total Governmental Activities Net Position</b>	<b>\$ 126,039</b>	<b>\$ 217,525</b>	<b>\$ 218,666</b>	<b>\$ 215,893</b>	<b>\$ 215,430</b>	<b>\$ 220,013</b>	<b>\$ 220,198</b>	<b>\$ 220,780</b>	<b>\$ 215,699</b>	<b>\$ 241,503</b>

**TOWN OF ENFIELD, CONNECTICUT**  
**CHANGES IN NET POSITION**  
**LAST TEN FISCAL YEARS**  
(In Thousands)

	Fiscal Year									
	2006	2007	2008	2009	2010	2011	2012	2013	2014	2015
Expenses:										
Governmental activities:										
General government	\$ 5,238	\$ 5,680	\$ 5,774	\$ 5,251	\$ 6,054	\$ 6,246	\$ 12,111	\$ 7,304	\$ 9,552	\$ 9,040
Public safety	11,194	11,094	11,524	11,041	11,843	12,244	12,612	13,134	16,121	15,315
Recreation	438	521	551	478	30	30	30	29		
Public works	18,511	20,209	21,396	20,017	24,585	22,456	25,465	25,388	25,829	26,430
Health and social services	7,706	8,255	7,621	8,176	8,193	8,481	8,761	8,837	9,157	9,600
Library	1,757	1,741	1,735	1,720	1,766	1,790	1,773	1,789	1,809	1,858
Planning and development	809	789	985	857	1,152	1,073	1,165	1,326	1,234	1,518
Intergovernment and interagency	431	347	364	373						
Education	79,465	81,709	107,037	88,234	81,373	82,836	83,469	84,160	86,343	83,736
Interest on long-term debt	1,062	950	1,099	1,269	1,337	1,107	1,116	875	922	2,683
Total governmental activities expenses	<u>126,611</u>	<u>131,295</u>	<u>158,086</u>	<u>137,416</u>	<u>136,333</u>	<u>136,263</u>	<u>146,502</u>	<u>142,842</u>	<u>150,967</u>	<u>150,180</u>
Program Revenues:										
Governmental activities:										
Charges for services:										
General government	1,570	1,292	1,247	979	1,499	1,410	2,000	1,801	4,035	3,134
Public safety	303	321	335	149	660	944	634	459	451	603
Recreation, arts and culture	127	138	308	376	193	225	141	192		
Public works	1,186	1,134	2,129	1,060	1,108	1,381	1,077	2,255	2,268	5,058
Health and social services	2,412	3,569	3,644	4,260	3,995	3,943	4,477	3,788	4,070	4,219
Library	29	24	27	21	21	24	24	17	18	16
Planning and development	91	167	55	59	59	33	28	41		
Education	4,065	4,069	3,954	3,683	3,583	2,626	1,529	1,757	3,798	1,094
Operating grants and contributions	36,301	37,194	64,003	40,399	42,158	45,292	46,569	45,565	48,368	46,447
Capital grants and contributions	1,794	5,392	635	1,500	2,668	5,003	8,829	4,622	3,986	28,935
Total governmental activities program revenues	<u>47,878</u>	<u>53,300</u>	<u>76,337</u>	<u>52,486</u>	<u>55,944</u>	<u>60,881</u>	<u>65,308</u>	<u>60,497</u>	<u>66,994</u>	<u>89,506</u>
Net (expense) revenue:										
Governmental activities	<u>(78,733)</u>	<u>(77,995)</u>	<u>(81,749)</u>	<u>(84,930)</u>	<u>(80,389)</u>	<u>(75,382)</u>	<u>(81,194)</u>	<u>(82,345)</u>	<u>(83,973)</u>	<u>(60,674)</u>
General Revenues and Other Changes in Net Position:										
Governmental activities:										
Property taxes	73,141	76,232	76,103	76,668	75,936	76,638	77,384	79,475	84,360	84,230
Grants and contributions not restricted to specific programs	4,670	5,727	5,098	4,661	3,399	3,091	3,538	3,333	1,708	2,065
Unrestricted investment earnings	2,128	2,975	397	828	591	236	457	119	189	183
Miscellaneous	383	709	1,292							
Total governmental activities	<u>80,322</u>	<u>85,643</u>	<u>82,890</u>	<u>82,157</u>	<u>79,926</u>	<u>79,965</u>	<u>81,379</u>	<u>82,927</u>	<u>86,257</u>	<u>86,478</u>
Change in Net Position:										
Governmental activities	<u>\$ 1,589</u>	<u>\$ 7,648</u>	<u>\$ 1,141</u>	<u>\$ (2,773)</u>	<u>\$ (463)</u>	<u>\$ 4,583</u>	<u>\$ 185</u>	<u>\$ 582</u>	<u>\$ 2,284</u>	<u>\$ 25,804</u>

**TOWN OF ENFIELD, CONNECTICUT  
FUND BALANCES OF GOVERNMENTAL FUNDS  
LAST TEN FISCAL YEARS**

(In Thousands)

	Fiscal Year									
	2006	2007	2008	2009	2010	2011	2012	2013	2014	2015
General Fund:										
Nonspendable	\$	\$	\$	\$	\$	\$ 3,823	\$ 3,732	\$ 4,310	\$ 4,624	\$ 4,593
Committed									1,968	2,130
Assigned						1,448	2,569	1,592	832	2,171
Unassigned						13,113	11,784	13,525	16,041	16,908
Reserved	1,678	2,007	931	3,908	4,237					
Unreserved	16,745	17,888	20,777	15,234	14,027					
Total General Fund	\$ 18,423	\$ 19,895	\$ 21,708	\$ 19,142	\$ 18,264	\$ 18,384	\$ 18,085	\$ 19,427	\$ 23,465	\$ 25,802
All Other Governmental Funds:										
Nonspendable	\$	\$	\$	\$	\$	\$ 197	\$ 196	\$ 196	\$ 149	\$ 124
Restricted						2,117	1,961	701	732	801
Committed						7,525	2,839	3,354	5,902	5,430
Assigned							5,648	3,552		
Unassigned						(3,681)	(13,146)	(9,746)	(14,415)	(10,184)
Reserved	5,100	10,395	4,486	2,715	3,215					
Unreserved, reported in:										
Special Revenue Funds	(1,950)	42	(43)	(485)	(2,392)					
Capital Projects Funds	6,481	(812)	9,676	9,790	7,004					
Permanent Funds	21	23	25	26	25					
Total All Other Governmental Funds	\$ 9,652	\$ 9,648	\$ 14,144	\$ 12,046	\$ 7,852	\$ 6,158	\$ (2,502)	\$ (1,943)	\$ (7,632)	\$ (3,829)

The Town implemented GASB No. 54 in fiscal year 2011, which changed the Town's method of reporting governmental fund balance.

**TOWN OF ENFIELD, CONNECTICUT  
REVENUES, EXPENDITURES AND CHANGES IN FUND BALANCES - GOVERNMENTAL FUNDS  
LAST TEN FISCAL YEARS**

(In Thousands)

	Fiscal Year									
	2006	2007	2008	2009	2010	2011	2012	2013	2014	2015
<b>Revenues:</b>										
Property taxes	\$ 72,430	\$ 75,769	\$ 75,714	\$ 77,302	\$ 75,870	\$ 75,675	\$ 76,401	\$ 79,821	\$ 84,438	\$ 84,505
Intergovernmental	42,401	48,089	69,320	45,817	46,510	51,949	54,327	58,667	54,709	77,828
Charges for services	10,199	11,188	8,254	10,849	11,010	10,586	9,914	10,144	13,931	12,876
Contributions	238	199	62	176	104	733	243	117	253	275
Investment income	1,680	2,301	1,708	828	421	197	440	87	189	182
Other revenues	143	32	6,156	218	109	110	2	6	10	45
Total revenues	<u>127,091</u>	<u>137,578</u>	<u>161,214</u>	<u>135,190</u>	<u>134,024</u>	<u>139,250</u>	<u>141,327</u>	<u>148,842</u>	<u>153,530</u>	<u>175,711</u>
<b>Expenditures:</b>										
General government	3,952	4,220	5,206	4,763	5,102	5,680	10,510	6,909	6,684	7,097
Public safety	8,464	7,624	9,802	10,171	11,041	11,846	11,874	12,225	12,974	13,715
Recreation	415	421	507	449						
Public works	13,521	12,962	14,125	13,239	20,406	18,247	18,636	18,949	19,605	21,326
Health and social services	5,948	7,015	7,674	7,997	7,606	7,931	8,343	8,353	8,557	8,917
Library	1,201	1,265	1,565	1,578	1,554	1,614	1,603	1,593	1,630	1,724
Planning and development	729	728	974	857	1,152	1,073	1,165	1,326	1,204	1,418
Intergovernmental and interagency	431	347	364	373	384	403	413	448	435	442
Education	77,705	80,284	105,828	83,057	75,928	78,693	78,875	79,292	82,902	79,340
Nondepartmental	8,555	8,894	4,122	4,482	8,018	4,987	5,742	4,995	5,453	6,225
Capital outlay	6,983	8,376	20,184	7,851	4,964	8,057	14,243	12,684	13,001	50,908
Debt service:										
Principal	3,000	3,000	3,000	3,850	4,130	2,400	2,860	2,093	1,947	3,336
Interest	1,088	974	934	1,568	1,345	1,177	1,092	875	1,572	1,572
Total expenditures	<u>131,992</u>	<u>136,110</u>	<u>174,285</u>	<u>140,235</u>	<u>141,630</u>	<u>142,108</u>	<u>155,356</u>	<u>149,742</u>	<u>155,964</u>	<u>196,020</u>
Excess of revenues over (under) expenditures	<u>(4,901)</u>	<u>1,468</u>	<u>(13,071)</u>	<u>(5,045)</u>	<u>(7,606)</u>	<u>(2,858)</u>	<u>(14,029)</u>	<u>(900)</u>	<u>(2,434)</u>	<u>(20,309)</u>
<b>Other financing sources (uses):</b>										
Proceeds from bonds			19,000	10,395						
Capital lease issuance	51			437	1,072	1,287	4,285	2,707	783	25,000
Proceeds from refunding bonds					10,395					
Payments to escrow agents					(12,627)					
Proceeds on bond premiums					1,009			94		1,449
Transfers in	8,374	8,248	8,248	11,649	11,671	5,264	4,734	4,447	4,705	3,469
Transfers out	(8,269)	(8,248)	(8,248)	(11,349)	(8,986)	(5,264)	(3,949)	(4,447)	(4,705)	(3,469)
Total other financing sources	<u>156</u>	<u>-</u>	<u>19,000</u>	<u>11,132</u>	<u>2,534</u>	<u>1,287</u>	<u>5,070</u>	<u>2,801</u>	<u>783</u>	<u>26,449</u>
Net Change in Fund Balances	<u>\$ (4,745)</u>	<u>\$ 1,468</u>	<u>\$ 5,929</u>	<u>\$ 6,087</u>	<u>\$ (5,072)</u>	<u>\$ (1,571)</u>	<u>\$ (8,959)</u>	<u>\$ 1,901</u>	<u>\$ (1,651)</u>	<u>\$ 6,140</u>
Debt Service as a Percentage of Noncapital Expenditures	3.6%	3.3%	3.1%	2.6%	4.1%	4.0%	4.0%	2.8%	2.2%	2.5%



**TOWN OF ENFIELD, CONNECTICUT  
 ASSESSED VALUE AND ESTIMATED ACTUAL VALUE OF TAXABLE PROPERTY  
 LAST TEN FISCAL YEARS**

(In Thousands)

Fiscal Year	Real Property			Personal Property	Motor Vehicle	Less Tax Exempt Property	Total Taxable Assessed Value	Total Direct Tax Rate	Estimated Actual Taxable Value	Taxable Assessed Value As a Percentage of Actual Taxable Value
	Residential	Commercial Industrial	Land							
2015	\$ 1,796,940	\$ 592,825	\$ 33,312	\$ 204,876	\$ 261,380	\$ 38,239	\$ 2,851,094	29.13	\$ 4,072,991	70%
2014	1,795,479	604,574	33,473	198,099	252,396	38,698	2,845,323	29.26	4,064,747	70%
2013(a)	1,795,350	611,232	35,112	194,670	258,008	41,300	2,853,072	27.84	4,075,817	70%
2012	2,113,105	683,778	26,923	181,749	245,484	37,669	3,213,370	23.88	4,590,529	70%
2011	2,109,385	682,905	26,911	181,113	232,306	39,356	3,193,264	23.88	4,561,806	70%
2010	2,105,310	667,538	26,840	184,333	228,213	47,248	3,164,986	23.88	4,521,409	70%
2009	2,099,258	663,158	30,091	178,150	240,108	36,840	3,173,925	23.88	4,534,179	70%
2008(b)	2,090,279	660,989	31,570	186,657	237,277	45,202	3,161,570	23.88	4,516,529	70%
2007	1,211,014	472,041	21,321	182,567	235,424	38,735	2,083,632	36.18	2,976,617	70%
2006	1,202,479	458,176	20,824	173,138	222,785	32,369	2,045,033	35.20	2,921,476	70%

Source: Town of Enfield Office of Tax Assessor

(a) Revaluation completed effective October 1, 2011 Grand List. The basis of assessment is 70% of the 2011 fair market value.

(b) Revaluation completed effective October 1, 2006. The basis of assessment is 70% of the 2006 fair market value.

**TOWN OF ENFIELD, CONNECTICUT  
DIRECT AND OVERLAPPING PROPERTY TAX RATES  
LAST TEN FISCAL YEARS**

	Fiscal Year									
	2015	2014	2013	2012	2011	2010	2009	2008	2007	2006
Town: General	29.13	29.26	27.84	23.88	23.88	23.88	23.88	23.88	36.18	35.20
District:										
Enfield F.D.	3.25	3.15	3.05	2.65	2.65	2.65	2.65	2.65	3.10	2.98
Thompsonville F.D.	7.25	6.45	6.60	5.60	5.60	5.60	5.60	5.60	7.15	6.90
Hazardville F.D.	2.40	2.10	2.10	1.75	1.75	1.75	1.75	1.75	2.75	2.25
N. Thompsonville F.D.	3.15	3.05	2.90	2.40	2.40	2.40	2.40	2.40	3.00	2.75
Shaker Pines F.D.	2.30	2.30	2.20	1.70	1.70	1.70	1.10	1.10	1.80	1.80

Source: Town of Enfield Finance Department

TABLE 7

**TOWN OF ENFIELD, CONNECTICUT  
PRINCIPAL PROPERTY TAX PAYERS  
2013 AND 2004**

(In Thousands)

Taxpayer	October 1, 2013			October 1, 2004		
	Taxable Assessed Value	Rank	Percentage of Total Town Taxable Assessed Value (a)	Taxable Assessed Value	Rank	Percentage of Total Town Taxable Assessed Value (b)
Mass Mutual Insurance	\$ 41,711	1	1.46%	\$		
Centro Enfield LLC	35,121	2	1.23%			
National Industrial Portfolio	32,531	3	1.14%			
Connecticut Light and Power	30,894	4	1.09%	18,112	6	0.90%
Hallmark Cards	30,223	5	1.06%	35,993	2	1.79%
Retail Brand Alliance	23,250	6	0.82%			
Galileo Freshwater/Stateline	22,393	7	0.79%			
Paremount Commons at Enfield LLC	21,866	8	0.77%			
Equity One LLC	18,217	9	0.64%			
Eppendorf, Inc.	17,605	10	0.62%			
Northland Bigelow Commons LTD				11,561	8	0.57%
Lego Building Corp				64,045	1	3.18%
Phoenix Home Life Mutual				33,575	3	1.67%
Enfield Square, LLC				26,795	4	1.33%
Casual Corner Group, Inc				23,413	5	1.16%
Gateway Conn Properties				12,854	7	0.64%
SEA Enfield Commons, LLC				11,087	9	0.55%
Connecticut Water Company				8,388	10	0.42%
Total	\$ <u>273,811</u>		<u>9.62%</u>	\$ <u>245,823</u>		<u>12.21%</u>

Source: Town of Enfield, Office of Tax Assessor

TABLE 8

**TOWN OF ENFIELD, CONNECTICUT  
PROPERTY TAX LEVIES AND COLLECTIONS  
LAST TEN FISCAL YEARS**

(In Thousands)

Fiscal Year Ended June 30,	Tax Rate In Mills	Taxes Levied For This Fiscal Year	Collected Within The Fiscal Year of Levy		Collections in Subsequent Years	Total Collections to Date	
			Amount	Percentage of Levy		Amount	Percentage of Levy
2015	29.13	\$ 83,052	\$ 81,517	98.15%	\$	\$ 81,517	98.15%
2014	29.26	83,132	81,428	97.95%	1,022	82,450	99.18%
2013	27.84	80,002	78,202	97.75%	1,425	79,627	99.53%
2012	23.88	76,343	74,517	97.61%	1,559	76,076	99.65%
2011	23.88	75,863	74,191	97.80%	1,416	75,607	99.66%
2010	23.88	75,354	73,940	98.12%	1,187	75,127	99.70%
2009	23.88	75,612	74,138	98.05%	1,213	75,351	99.65%
2008	23.88	75,213	73,579	97.83%	1,400	74,979	99.69%
2007	36.18	75,636	73,763	97.52%	1,529	75,292	99.55%
2006	35.20	72,224	70,454	97.55%	1,389	71,843	99.47%

Source: Tax Collector's Report: Comprehensive annual financial report

**TOWN OF ENFIELD, CONNECTICUT  
RATIOS OF OUTSTANDING DEBT BY TYPE  
LAST TEN FISCAL YEARS**

(Thousands, except per capita)

<u>Fiscal Year</u>	<u>General Obligation Bonds</u>	<u>(a) Ratio of Bonded Debt to Taxable Assessed Value</u>	<u>(b) General Bonded Debt Per Capita</u>	<u>Capital Leases</u>	<u>Total Primary Government</u>	<u>(a) Ratio of Debt to Taxable Assessed Value</u>	<u>(b) Total Debt Per Capita</u>	<u>(c) Total Debt Per Personal Income</u>
2015	\$ 41,590	1.46%	\$ 924	\$ 2,922	\$ 44,512	1.56%	\$ 989	\$ 664
2014	19,450	0.68%	432	4,633	24,083	0.85%	535	365
2013	21,975	0.77%	488	5,546	27,521	0.96%	612	417
2012	23,905	0.74%	531	4,867	28,772	0.90%	639	436
2011	26,765	0.84%	608	1,923	28,688	0.90%	652	441
2010	29,165	0.92%	648	1,145	30,310	0.96%	674	497
2009	34,650	1.09%	770	358	35,008	1.10%	778	574
2008	38,500	1.22%	856	7	38,507	1.22%	856	631
2007	22,500	1.08%	500	23	22,523	1.08%	501	369
2006	25,500	1.25%	567	38	25,538	1.25%	568	419

Note: Details regarding the Town's outstanding debt can be found in the notes to the financial statements.

(a) See Table 5 for taxable assessed value

(b) See Table 13 for population figures

(c) See Table 13 for total personal income

**TOWN OF ENFIELD, CONNECTICUT  
DIRECT AND OVERLAPPING GOVERNMENTAL ACTIVITIES DEBT  
AS OF JUNE 30, 2015**

(In Thousands)

<u>Governmental Unit</u>	<u>Debt Outstanding</u>	<u>Percentage Applicable</u>	<u>Estimated Shares of Direct and Overlapping Debt</u>
Debt repaid with property taxes:			
Enfield Fire District	\$ 796	100%	\$ 796
Thompsonville Fire District	4,167	100%	4,167
Hazardville Fire District	622	100%	622
North Thompsonville Fire District	<u>350</u>	100%	<u>350</u>
Total overlapping debt	5,935		5,935
Town direct debt	<u>44,512</u>	100%	<u>44,512</u>
Total	<u>\$ 50,447</u>		<u>\$ 50,447</u>

The Town has five fire districts. The direct and overlapping debt is calculated at 100% of the total bonds and capital leases outstanding for each fire district.

**TOWN OF ENFIELD, CONNECTICUT  
SCHEDULE OF DEBT LIMITATION  
JUNE 30, 2015**

(In Thousands)

Total Tax Collections (Including Interest and Lien Fees) for the Year Ended June 30, 2015	\$ 95,086
Reimbursement for Revenue Loss: Tax relief for elderly freeze	<u>2</u>
Base for Debt Limitation Computation	<u>\$ 95,088</u>

	<u>General Purpose</u>	<u>Schools</u>	<u>Sewers</u>	<u>Urban Renewal</u>	<u>Pension Deficit</u>
Debt Limitation:					
2 1/4 times base	\$ 213,948	\$	\$	\$	\$
4 1/2 times base		427,896			
3 3/4 times base			356,580		
3 1/4 times base				309,036	
3 times base					285,264
	<u>213,948</u>	<u>427,896</u>	<u>356,580</u>	<u>309,036</u>	<u>285,264</u>
Total debt limitation	<u>213,948</u>	<u>427,896</u>	<u>356,580</u>	<u>309,036</u>	<u>285,264</u>
Indebtedness:					
Bonds payable	38,434	3,156			
Bond authorized but unissued	57,500	35,000			
Fire district debt	5,935				
	<u>101,869</u>	<u>38,156</u>	<u>-</u>	<u>-</u>	<u>-</u>
Net Indebtedness (1) (2)	<u>101,869</u>	<u>38,156</u>	<u>-</u>	<u>-</u>	<u>-</u>
Debt Limitation in Excess of Indebtedness	<u>\$ 112,079</u>	<u>\$ 389,740</u>	<u>\$ 356,580</u>	<u>\$ 309,036</u>	<u>\$ 285,264</u>

(1) The total of the above net indebtedness amounts to: \$ 140,025

In no event shall total indebtedness exceed seven times the base for debt limitation computation: \$ 665,616

(2) There is no overlapping debt.

**TOWN OF ENFIELD, CONNECTICUT  
LEGAL DEBT MARGIN INFORMATION  
LAST TEN FISCAL YEARS**

(In Thousands)

	FISCAL YEAR									
	2015	2014	2013	2012	2011	2010	2009	2008	2007	2006
Debt limitation	\$ 665,616	\$ 663,733	\$ 626,094	\$ 599,466	\$ 593,768	\$ 255,521	\$ 601,174	\$ 585,830	\$ 582,253	\$ 554,757
Total net debt applicable to limit	<u>140,025</u>	<u>83,747</u>	<u>91,272</u>	<u>58,172</u>	<u>36,960</u>	<u>44,220</u>	<u>38,552</u>	<u>40,320</u>	<u>24,605</u>	<u>27,875</u>
Legal Debt Margin	<u>\$ 525,591</u>	<u>\$ 579,986</u>	<u>\$ 534,822</u>	<u>\$ 541,294</u>	<u>\$ 556,808</u>	<u>\$ 211,301</u>	<u>\$ 562,622</u>	<u>\$ 545,510</u>	<u>\$ 557,648</u>	<u>\$ 526,882</u>
Total Net Debt Applicable to the Limit as a Percentage of Debt Limit	21.04%	12.62%	14.58%	9.70%	6.22%	17.31%	6.41%	6.88%	4.23%	5.60%

Source: Comprehensive annual financial report - Schedule of Debt Limitation

Note: See Table 11 for calculation of current year debt limitation.



**TOWN OF ENFIELD, CONNECTICUT  
DEMOGRAPHIC AND ECONOMIC STATISTICS  
LAST TEN CALENDAR YEARS**

<u>Calendar Year</u>	<u>Population (1)</u>	<u>Per Capita Income (2)</u>	<u>Median Household Income (2)</u>	<u>Median Age (1)</u>	<u>School Enrollment (3)</u>	<u>Unemployment Rate (4)</u>
2015	45	\$ 30	\$ 67	41.0	5	4.5%
2014	45	29	66	41.0	5	5.8%
2013	45	29	66	41.0	5	8.0%
2012	45	29	66	41.0	6	8.7%
2011	44	28	65	40.0	6	6.8%
2010	45	21	61	37.3	6	8.3%
2009	45	22	61	37.3	6	7.7%
2008	45	22	61	37.3	6	6.5%
2007	45	22	61	37.3	6	4.7%
2006	45	22	61	37.3	7	4.7%

(1) Source: U.S. Department of Commerce, Bureau of the Census - 2011-2013 American Community Survey 3 Year Estimates - Demographic and Housing Estimates

(2) Source: U.S. Department of Commerce, Bureau of the Census - 2011-2013 American Community Survey 3 Year Estimates - Selected Economic Characteristics

(3) Source: Town of Enfield School Administration

(4) Source: State of Connecticut Department of Labor October 2015

**TOWN OF ENFIELD, CONNECTICUT  
PRINCIPAL EMPLOYERS  
CURRENT YEAR AND NINE YEARS AGO**

Employer	Nature of Business	2015			2006		
		Employees	Rank	Percentage of Total Town Employment(a)	Employees	Rank	Percentage of Total Town Employment(b)
Mass Mutual Insurance	Insurance	1,755	1	8.32%	1,950	1	8.02%
Lego Building Corp.	Plastic Games & Toys	715	2	3.39%	325	4	1.34%
Hallmark Cards, Inc.	Greeting Cards	570	3	2.70%	860	2	3.54%
Retail Brand Alliance	Retail	450	4	2.13%			
Eppendorf Manufacturing	Life Science	230	5	1.09%			
CT Dept. of Corrections	Detention Facilities	225	6	1.07%			
Martin Brower	Transportation	210	7	1.00%	215	8	0.88%
Target	Retail	200	8	0.95%			
Super Stop & Shop	Grocery Chain	170	9	0.81%			
Underwriter's Labs	Product Safety Testing	153	10	0.73%			
Precision Camera	Camera Repair				500	3	2.06%
CUNO, Inc.	Water Filters				300	5	1.23%
Retail Brand Alliance	Retail				300	6	1.23%
Mead/Westvaco	Manufacturing				217	7	0.89%
<b>Total</b>		<b>4,678</b>		<b>22.19%</b>	<b>4,667</b>		<b>19.19%</b>

Source: Town of Enfield Official Statement and Historical Report

(a) State of Connecticut, Department of Labor - Town employment of 21,085

(b) State of Connecticut, Department of Labor - Town employment of 22,475

\* Information not available for top 9 and 10 employers for 2006.

TABLE 15

**TOWN OF ENFIELD, CONNECTICUT  
FULL-TIME EQUIVALENT TOWN GOVERNMENT EMPLOYEES BY FUNCTION/PROGRAM  
LAST TEN FISCAL YEARS**

<u>Function/Program</u>	<u>Fiscal Year</u>									
	<u>2015</u>	<u>2014</u>	<u>2013</u>	<u>2012</u>	<u>2011</u>	<u>2010</u>	<u>2009</u>	<u>2008</u>	<u>2007</u>	<u>2006</u>
General Government	56	61	55	61	58	59	68	63	64	64
Public Safety	149	137	130	136	121	138	138	138	120	129
Refuse Collection	20	19	20	20	20	21	22	22	19	20
Social Services	69	63	68	63	63	68	74	75	83	81
Public Works	117	109	110	112	109	109	65	68	69	70
Parks and Recreation	2	2	2	3	3	3	3	2	3	3
Library	17	18	15	16	20	19	19	18	28	28
Education (a)	<u>766</u>	<u>771</u>	<u>781</u>	<u>796</u>	<u>826</u>	<u>835</u>	<u>831</u>	<u>854</u>	<u>840</u>	<u>826</u>
Total	<u>1,196</u>	<u>1,180</u>	<u>1,181</u>	<u>1,207</u>	<u>1,220</u>	<u>1,252</u>	<u>1,220</u>	<u>1,240</u>	<u>1,226</u>	<u>1,221</u>

Source: Historical annual reports and departmental reports

**TOWN OF ENFIELD, CONNECTICUT  
OPERATING INDICATORS BY FUNCTION/PROGRAM  
LAST TEN FISCAL YEARS**

Function/Program	Fiscal Year									
	2015	2014	2013	2012	2011	2010	2009	2008	2007	2006
General government:										
Building permits issued	2,527	2,289	2,174	2,143	1,896	1,782	1,782	1,718	1,979	2,486
Police:										
Physical arrests	1,438	1,303	1,406	2,729	2,913	1,510	1,510	1,616	3,336	3,269
Parking violations	203	485	217	325	507	583	583	457	619	546
Traffic violations	5,087	10,640	10,711	10,357	11,235	11,797	11,797	12,815	9,256	8,294
Refuse collection:										
Refuse collected (tons per day)	55	66	70	69	85	62	62	60	69	68
Recyclables (tons per day)	16	18	21	18	16	13	13	12	11	11
Library:										
Volumes in collection	154,269	141,271	136,043	136,043	147,751	145,570	145,570	141,039	136,109	143,148
Total volumes borrowed	290,609	309,780	329,064	352,091	368,370	383,243	383,243	350,951	330,551	334,204
Wastewater:										
Average daily sewage treatment (thousands of gallons)	4,550	5,295	4,954	5,820	5,160	5,900	5,900	6,532	5,200	5,336

Source: Historical departmental reports

**TOWN OF ENFIELD, CONNECTICUT  
CAPITAL ASSET STATISTICS BY FUNCTION/PROGRAM  
LAST TEN FISCAL YEARS**

Function/Program	Fiscal Year									
	2015	2014	2013	2012	2011	2010	2009	2008	2007	2006
Police:										
Stations	1	1	1	1	1	1	1	1	1	1
Zone offices	1	1	1	1	1	1	1	2	2	2
Patrol districts	7	7	7	7	7	7	7	7	7	7
Fire stations	6	6	6	6	6	6	6	6	6	6
Refuse collection:										
Collection trucks	13	13	14	13	15	15	13	10	10	10
Public works:										
Streets (miles)	181	181	181	181	181	181	181	180	180	180
Highways (miles)	30	30	30	30	30	30	30	30	30	30
Streetlights	3,690	3,690	3,690	3,690	3,690	3,690	3,690	57	57	57
Traffic signals	8	8	8	8	8	8	8	8	8	8
Parks and recreation:										
Acreage	404	404	404	404	404	404	404	205	205	205
Playgrounds	21	21	21	21	21	21	21	10	10	10
Baseball/softball diamonds	36	36	36	36	35	35	35	30	30	30
Soccer/football fields	17	17	17	17	17	17	17	17	17	17
Community centers	2	2	2	2	2	2	2	2	2	2
Wastewater:										
Sanitary sewers (miles)	286	286	286	286	286	286	286	300	300	300
Storm sewers (miles)	400	400	400	400	400	400	400	400	400	400