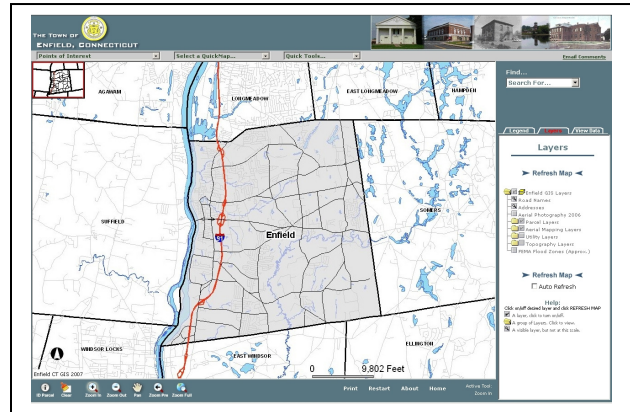


Town of Enfield Geographic Information System Information Sheet

Overview

The Town of Enfield has made available a Geographic Information System (GIS) on the Internet. The GIS brings a higher level of Staff efficiency, valuable geographic information and easy to access public information.

The ability to view Town geographic data is an enormous step in giving external participants access to information that would normally require a personal visit, phone call or email to Town Departments. The GIS provides many layers of geographic data such as aerial photography, parcels, land base and utilities. It also adds the ability to customize areas of the map, print a map and make measurements. Selectable Parcels on the site are linked to the Town's property record information giving another valuable resource available on the Town's website.



Town Staff are now able to obtain geographic data via the Town homepage. The GIS adds a central location for geographic data which enables Staff to be more efficient in their everyday duties. The addition of this system brings expandability which can only increase the high level of customer service the Town provides. Geographic data is the center point of Town activities and is now easier than ever to view and gain valuable information that had previously required a less efficient process.

Highlights

- Easy access to Town geographic information via the Internet.
- The data is centralized in a database and easily managed.
- Provides a more efficient means of obtaining information.

Interaction with Other Systems

- The GIS links to information within the Town Property Record Information.
- Centralized data can be accessed through ArcGIS Desktop and Autodesk Civil 3D

Project Details

- 04-28
- February 13, 2007