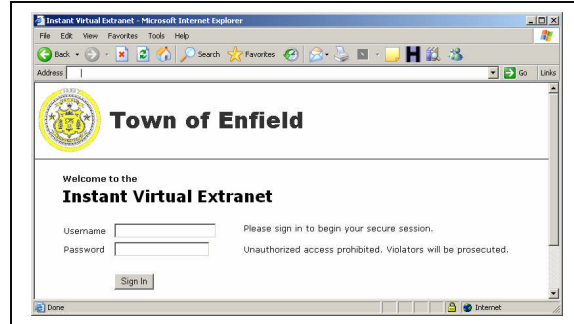


SSL VPN Information Sheet

Overview

The SSL (Secure Sockets Layer) VPN (Virtual Private Network) provides the capability for users who require secure and protected access to Town of Enfield network resources from locations outside of the wired network. Historically, VPN connectivity to any network resource has been limited to the type of device and network the user was attempting to connect from, usually resulting in no access to the desired resources. IPSEC VPN's required a client to be installed and would not work from inside most firewalled networks.

The SSL VPN gets around these limitations. This now means that users can access Town network resources from hotel rooms, internet and wireless cafes, or even from home. This could be extremely beneficial in the event of an emergency when critical staff cannot make it to Town Hall and need access to resources. From an IT point of view, this will result in faster resolution of problems outside of normal IT operating hours, since a support person will have access to the network without the need to travel to Town Hall.



For security the VPN provides a number of checks on the connecting computer to verify it meets Town of Enfield security criteria. These checks are performed before a user is presented with a login screen. If any of these checks fails, the user is not allowed to log on. One of these checks is for the presence of Anti-Virus software from one of over 100 software manufacturers. Another security feature designed for users connecting from public locations, such as a kiosk or internet café, is a Cache Cleaner. The Cache Cleaner removes all traces of the VPN session, so subsequent users of that machine will not find any files or session information left over from the VPN connection.

Highlights

- Secure access to network resources from any location at any time
- Network security is preserved while allowing remote access
- Users can access from public locations without the fear of leaving behind sensitive information
- Decreased response time and accelerated problem resolution outside of IT business hours

Interaction with Other Systems

- Emergency Operations Center remote access
- Authentication integrates with Active Directory infrastructure

Project Details

- Project # 07-3889
- Implemented 1/13/2007