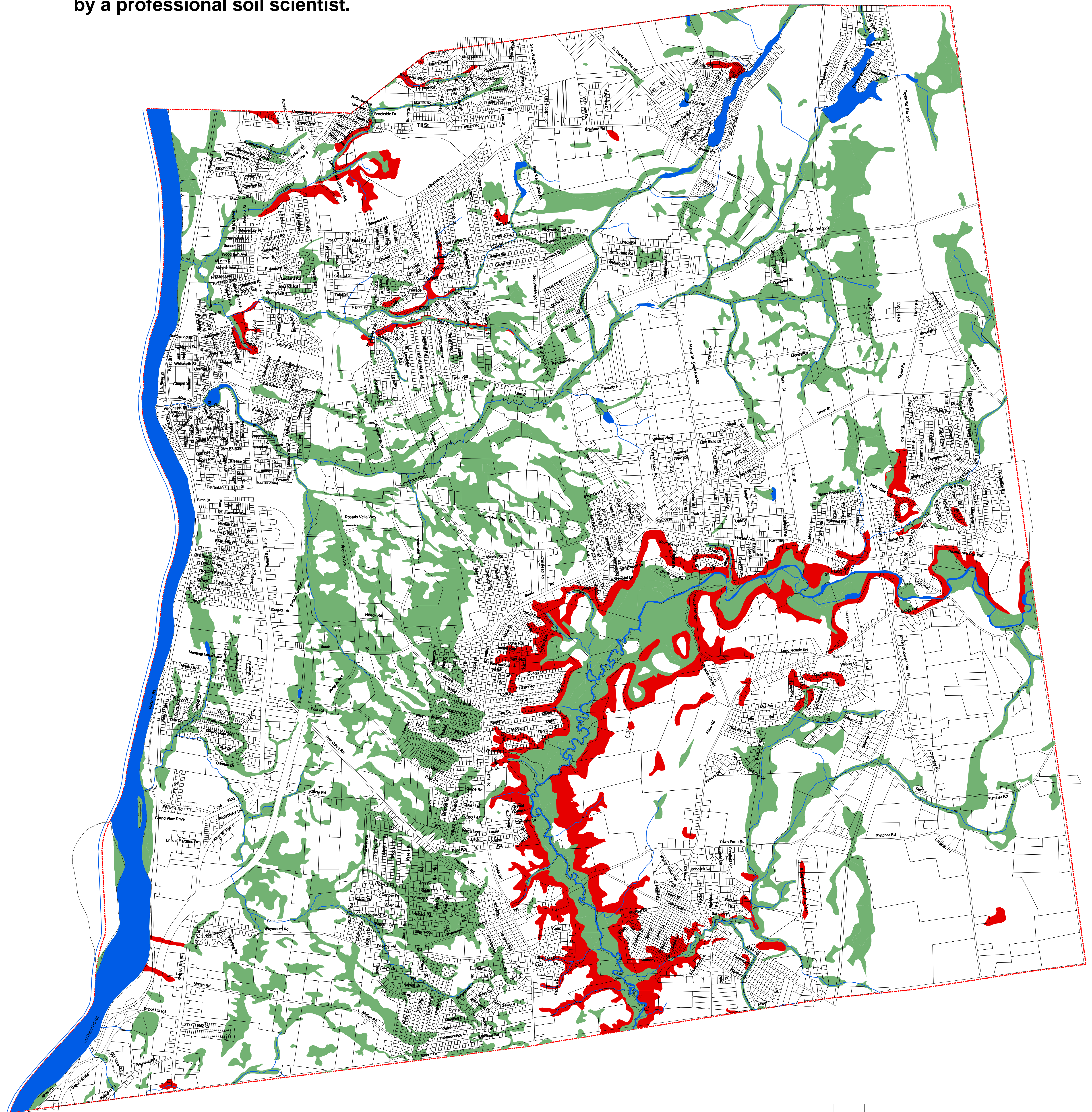
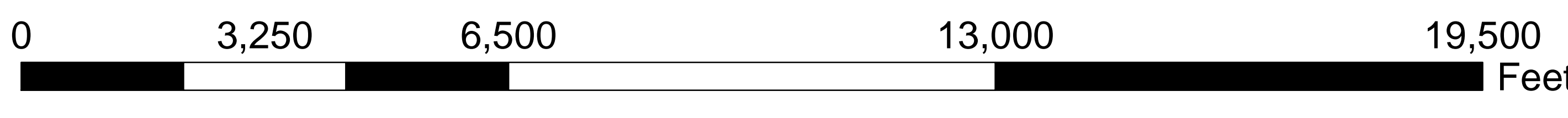
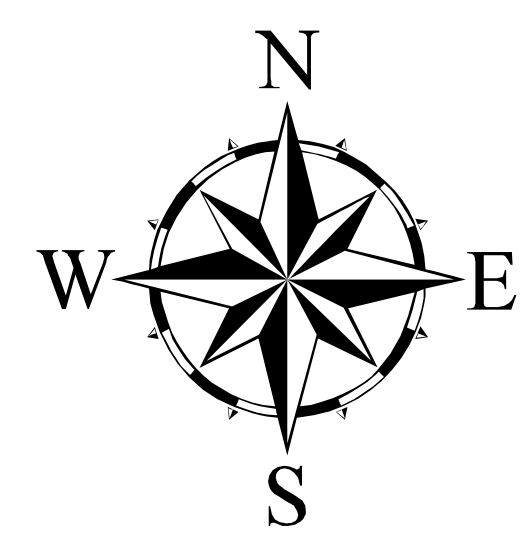


**Note: Wetland and watercourse locations shown on this map are approximate.
Actual wetland and watercourse boundaries must be verified
by a professional soil scientist.**



TOWN OF ENFIELD OFFICIAL WETLANDS MAP



Approximate Scale: 1" = 2200'

- Parcel Boundaries
- Wetland Soils
- Watercourses
- Terrace Escarpment Soils
- Town Boundary

Base Map Source: Parcel boundaries taken from the Town of Enfield Assessors Maps digitized by Harrall-Michalowski Associates, Inc. and Dicesare-Bentley Engineers, Inc. June 1998.
Soil and Water Features: Soil Map Units are from the Connecticut Soil Survey Database (Hartford County Soil Survey, 1962). Water features selected from U.S. Geological Survey Digital Line Graph Source Material (1960-1984) and 1990 aerial photo interpretation.
Geographical representations may not be exact.
Adopted by the Enfield Inland Wetlands and Watercourses Agency on April 19, 2005. Effective Date May 1, 2005. Signed: _____, Secretary, Enfield Inland Wetlands and Watercourses Agency